

Filed August 23, 1954
2:30 o'clock P.M.
Approved by County Commissioners
April 6th, 1955

PLAT OF SIDDOWNAY SUBDIVISION IN RELATION TO
LOTS 1 of Section 19 and Lot 4 of
Section 20, T. 13 N. R. 6 E. S. 14 N.

82

ENGINEER'S CERTIFICATE

STATE OF UTAH
COUNTY OF CACHE

I, Willis A. Tingley, Professional Engineer and Land Surveyor do here certify that this map and plat is true and correct and that it conforms to field notes on file in my office.

That the scale of said map and plat is 1 Inch equals 500 ft.

Dated this 5th day of August 1954 AD.

Signed Willis A. Tingley
Professional Engineer and Land
Surveyor. License No. 1076

Subscribed and sworn to before me this 5th day of August 1954

Wm. Nathan
Notary Public
Term Expires Nov 20, 1957

COUNTY RECORDER'S CERTIFICATE

STATE OF UTAH
COUNTY OF RICH

I, ADALPH W. LARSON, County Recorder in and for Rich County, State of Utah do here by certify that the plat and map of lands surveyed in Sections 24 and 25 T 13 N R 5 E and Sections 19, 20, 30 and 29 T 13 N R 6 E, Salt Lake Meridian was filed for recording in my office at 2:30 P.M. AUGUST 23 1954 AD.

File No. 5897

Adolph W. Larson
Rich County Recorder

LOCATION of PRINCIPAL
U.S. LAND OFFICE CORNERS
IN THE VICINITY of SIDDOWNAY
SUB-DIVISION - SE SORE
OF BEAR LAKE, RICH COUNTY
UTAH

July 7, 1954 Surveyed by
Scale 1" = 500' Willis A. Tingley

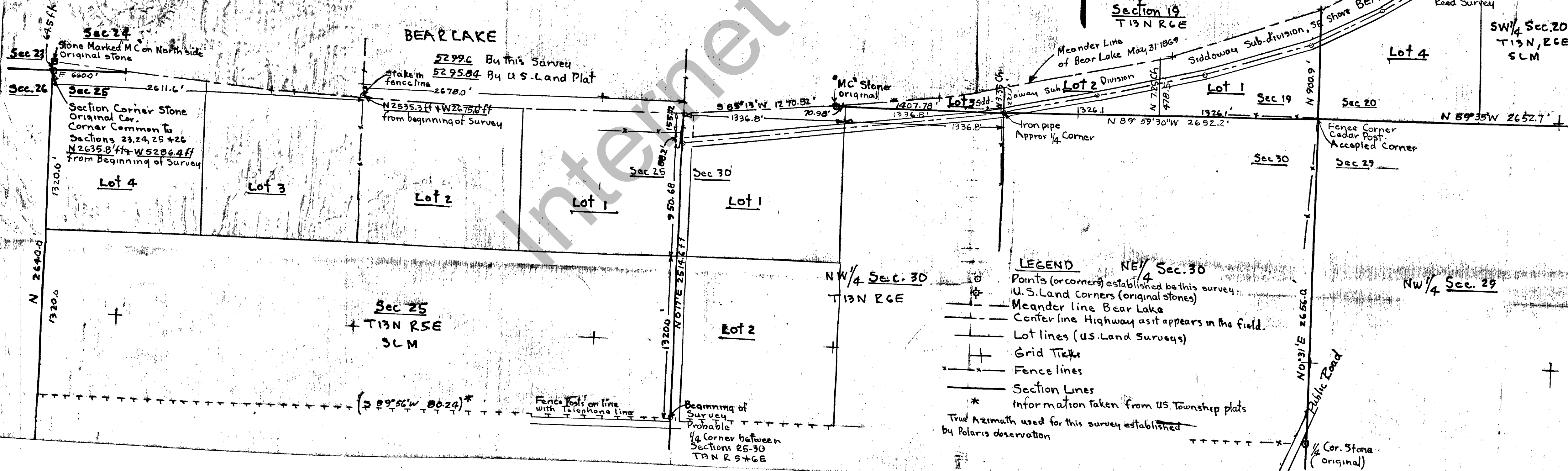
COUNTY COMMISSION APPROVAL

STATE OF UTAH
COUNTY OF RICH

Be it here known that the Location of Principal U. S. Land Office Corners in the Vicinity of Siddownay Sub-Division - SE Shore of Bear Lake, Rich County, Utah has been certified and acknowledged to, and presented to the Board of County Commissioners of Rich County for approval. It is now ordered that this plat is hereby approved, and ordered to be filed - this original tracing with the County Recorder and a printed copy with the clerk of the County Commission.

This 6th day of April 1955

Oswald Johnson County Commissioner, Chairman of Board.
Norman B. Weston County Commissioner
Francis J. Craig County Commissioner
Attest. Adolph W. Larson Commission Clerk.



LEGEND

- Points (or corners) established by this survey
 - U.S. Land Corners (original stones)
 - - - Meander line Bear Lake
 - - - Center line Highway as it appears in the field.
 - Lot lines (U.S. Land Surveys)
 - ⊕ Grid Ticks
 - Fence lines
 - Section Lines
 - * Information taken from U.S. Township plats
- True Azimuth used for this survey established by Polarix observation