

MEADOW PINES UNIT NO. 1

A SUBDIVISION OF PART OF THE NE 1/4, SECTION 25, T.13 N, R.5 E, S.L.B.&M.
 ALSO AN AMENDMENT OF LOTS 15-43, BLOCK 1, & LOTS 1-12, BLOCK 3, LAMBORN NO.1 SUBD.

RICH COUNTY,
 MOUNTAIN WEST DESIGN

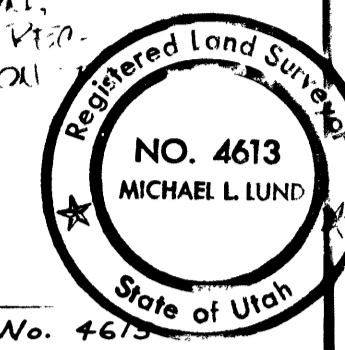
UTAH
 LOGAN

SURVEYOR'S CERTIFICATE

I, MICHAEL L. LUND, A REGISTERED LAND SURVEYOR IN THE STATE OF UTAH, DO HEREBY CERTIFY THAT THIS PLAN OF MEADOW PINES UNIT NO. 1 SUBDIVISION, DRAWN IN RICH COUNTY, UTAH, HAS BEEN CAREFULLY DRAWN TO THE UNRESOLVED SCALE AND IS A TRUE AND CORRECT REPRESENTATION OF THE FOLLOWING DESCRIBED TRACT OF LAND, INCLUDING IN THIS SUBDIVISION, PLANNED ON DATA COMPILED FROM THE COUNTY RECORDS OFFICE AND FROM A SURVEY MADE ON GROUND.

SUBMITTED THIS 23 DAY OF Nov., 1977

Michael L. Lund
 MICHAEL L. LUND, CERT. NO. 4613



BOUNDARY DESCRIPTION

BEGINNING AT A POINT WHICH LIES 00'-08"-20W, 2584.81 FEET; S87'-29'-06 W, 831.53'; AND S 88'-43'-36 W, 248.45' OF THE EAST 1/4 CORNER OF SECTION 25, TOWNSHIP 13 NORTH, RANGE 5 EAST, SALT LAKE BASE AND MERIDIANS; THENCE RUNNING S88'-43'-36W, 340.00 FEET; THENCE N 88'-51'-24 W, 260.00 FEET; THENCE N 88'-51'-24 W, 260.00 FEET; THENCE S 89'-26'-08 E, 276.84 FEET; THENCE S 89'-26'-08 E, 276.84 FEET; THENCE N 87'-44'-51 E, 222.82 FEET; THENCE N 88'-59'-20 E, 293.04 FEET; THENCE N 87'-03'-58 E, 101.87 FEET; THENCE N 88'-39'-25 E, 123.20 FEET; THENCE N 86'-19'-53 E, 149.56 FEET; THENCE N 85'-25'-25 E, 258.16 FEET; THENCE N 89'-04'-27 E, 83.08 FEET; THENCE N 71'-16'-24 W, 335.35 FEET; TO THE POINT OF BEGINNING. CONTAINING 12.74 ACRES. TOGETHER WITH ALL EGRESS-EGRESSAND UTILITIES RIGHT OF WAY WHOSE CENTERLINE IS DESCRIBED AS FOLLOWS: BEGINNING AT A POINT WHICH LIES 77'-48'-55 W, 3272.81 FEET OF THE EAST 1/4 CORNER OF SECTION 25, TOWNSHIP 13 NORTH, RANGE 5 EAST, SALT LAKE BASE AND MERIDIANS; THENCE RUNNING S 2'-10'-30 E, 340.53 FEET; THENCE S 21'-08'-10 E, 419.52 FEET; THENCE S 58'-50'-02 E, 188.45 FEET; THENCE S 18'-36'-31 E, 99.01 FEET; THENCE S 1'-15'-06 E, 253.61 FEET; THENCE S 46'-47'-06 E, 449.56 FEET; THENCE S 50'-38'-44 E, 175.26 FEET; THENCE S 17'-02'-59 E, 210.89 FEET; THENCE S 31'-05'-44 E, 131.40 FEET; THENCE S 54'-54'-03 E, 174.82 FEET; THENCE S 6'-36'-04 W, 170.28 FEET; TO AN EXISTING COUNTY ROAD.

OWNER'S DEDICATION

KNOW ALL MEN BY THESE PRESENTS THAT WE, THE UNDERSIGNED, WHO ARE OWNERS OF MEADOW PINES UNIT NO. 1 SUBDIVISION, LAMAR, COBLER, AND THE EGRESS-EGRESSAND UTILITIES RIGHT OF WAY, DO HEREBY DEDICATE AND CONVEY TO THE PUBLIC, FOR THE USE AND BENEFIT OF THE PEOPLE OF THE STATE OF UTAH, ALL THE CELESTIAL RIGHTS AND INTERESTS OF SAID PLAT, HOWEVER, SEWER AND WATER SYSTEM IMPROVEMENTS ARE NOT INCLUDED IN THIS DEDICATION.

Lew Cook LEW COOK
Sherwin O. Kirby SHERWIN O. KIRBY
Mildred H. Cook MILDRED H. COOK
Constance D. Kirby CONSTANCE D. KIRBY

SAID OWNERS EXECUTE THIS DEDICATION BOTH AS OWNERS AND ATTORNEYS-IN-FACT FOR ALL OTHER OWNERS OF RECORD OF SAID REALTY PURSUANT TO LIMITED POWERS OF ATTORNEY RECORDED OF EVEN DATE WITH THIS PLAT.

LEGEND

- 1/2" REBAR AT BOUNDARY CORNERS
- 1/2" REBAR AT LOT CORNERS
- CENTER LINES
- 100 FOOT BUILDING SET BACK LINE

NOTES

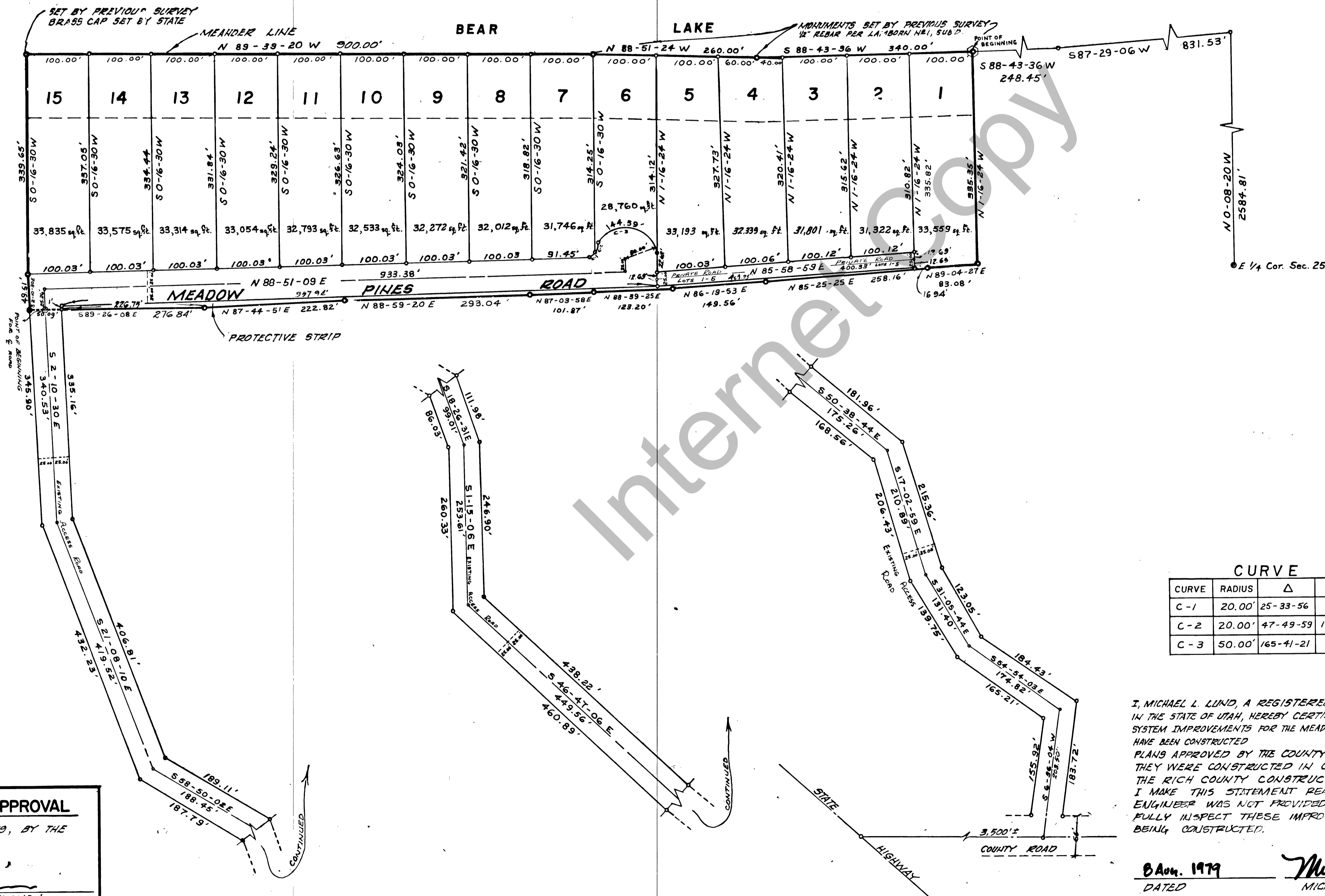
1. BASIS OF BEARINGS WERE TAKEN FROM THE RECORD BEARING OF THE NORTH LINE OF LAMBORN NO. 1 SUBDIVISION.

CURVE DATA				
CURVE	RADIUS	Δ	CHORD	TANGENT ARC
C-1	20.00'	25-33-56	8.85'	4.54' 8.92'
C-2	20.00'	47-49-59	16.22'	8.87' 16.70'
C-3	50.00'	165-41-21	99.22'	398.29' 144.59'

I, MICHAEL L. LUND, A REGISTERED PROFESSIONAL ENGINEER IN THE STATE OF UTAH, HEREBY CERTIFY THAT THE WATER & SEWER SYSTEM IMPROVEMENTS FOR THE MEADOW PINES UNIT NO. 1 SUBDIVISION HAVE BEEN CONSTRUCTED AS SHOWN ON THE PLANS APPROVED BY THE COUNTY ENGINEER, AND THAT THEY WERE CONSTRUCTED IN CONFORMANCE WITH THE RICH COUNTY CONSTRUCTION REQUIREMENTS. I MAKE THIS STATEMENT REALIZING THE ADDITIONAL ENGINEER WAS NOT PROVIDED AN OPPORTUNITY TO FULLY INSPECT THESE IMPROVEMENTS AS THEY WERE BEING CONSTRUCTED.

8 Nov. 1977
 DATED

Michael L. Lund
 MICHAEL L. LUND, CERT. NO. 4398



COUNTY ATTORNEY'S APPROVAL
 APPROVED THIS 31ST DAY OF August, 1977, BY THE RICH COUNTY ATTORNEY.
Amie J. Allen
 COUNTY ATTORNEY

COUNTY COMMISSION APPROVAL
 APPROVED THIS 21 DAY OF August, A.D. 1977, BY THE RICH COUNTY COMMISSION.
Chairman
 CHAIRMAN

PLANNING COMMISSION APPROVAL
 APPROVED THIS 29 DAY OF June, A.D. 1977, BY THE PLANNING COMMISSION.
Chairman
 CHAIRMAN

COUNTY ENGINEER'S APPROVAL
 APPROVED FOR FILING WITH THE COUNTY RECORDER OF RICH COUNTY, UTAH THIS 31ST DAY OF August, A.D. 1977.
Luick J. Rice
 COUNTY ENGINEER

ACKNOWLEDGEMENT
 STATE OF UTAH }
 COUNTY OF RICH }
 ON THE 2ND DAY OF August, 1977, PERSONALLY APPEARED BEFORE ME THE OWNERS OF THE ABOVE OWNERS DEDICATION, WHO DULY ACKNOWLEDGED TO ME THAT THEY EXECUTED THE SAME.
 MY COMMISSION EXPIRES: 9 December 1982.
Margaret C. Wickman
 NOTARY PUBLIC

COUNTY HEALTH DEPARTMENT APPROVAL
 STATE OF UTAH }
 COUNTY OF RICH }
 APPROVED THIS 2 DAY OF Aug, A.D. 1977, BY THE COUNTY HEALTH DEPARTMENT.
Richard K. Hill
 RICH COUNTY SANITARIAN

COUNTY RECORDER'S CERTIFICATE
 STATE OF UTAH }
 COUNTY OF RICH }
 THIS IS TO CERTIFY THAT THIS PLAT WAS FILED FOR RECORD IN THE COUNTY RECORDER'S OFFICE ON THE 31 DAY OF August, A.D. 1977, AT 4:00 O'CLOCK P.M. AND IS DULY RECORDED. SEE BOOK 1-3 PAGE 190.
Richard K. Hill
 COUNTY RECORDER