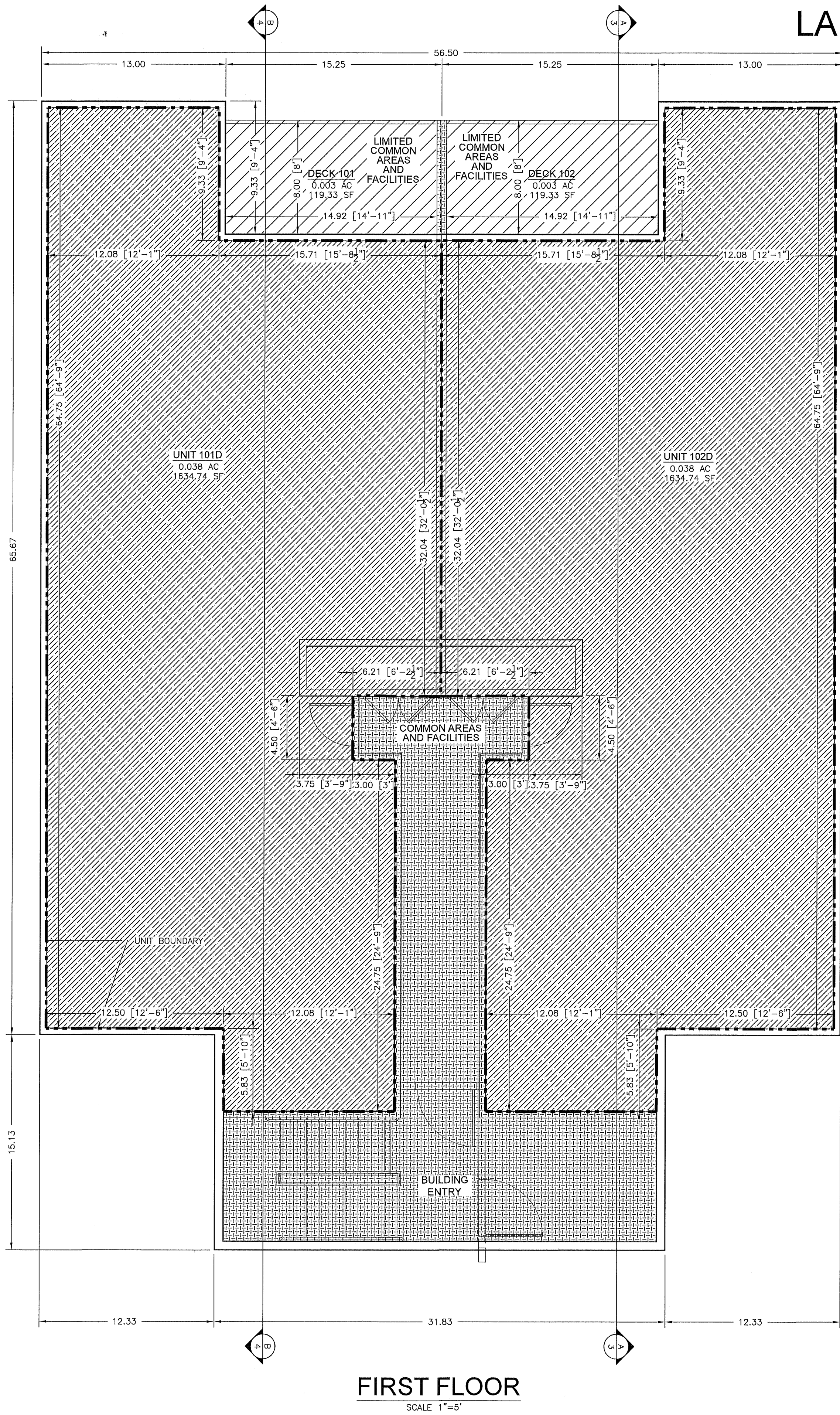


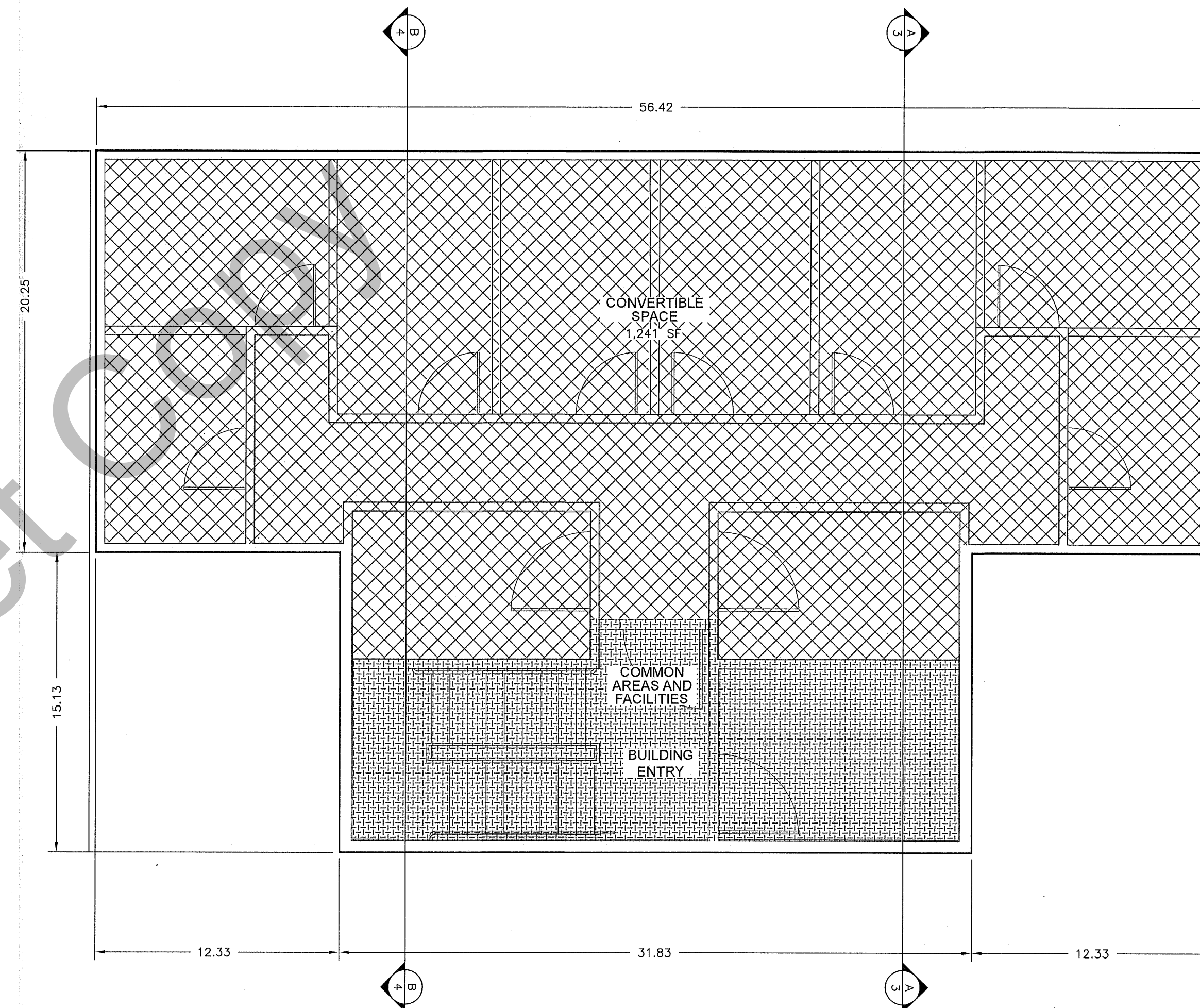
LAKE RESIDENCES AT BEAR LAKE PHASE 8B



FIRST FLOOR
SCALE 1"=5'

LEGEND

- UNIT BOUNDARY
- COMMON AREAS AND FACILITIES* / WITHDRAWABLE LAND
- LIMITED COMMON AREAS AND FACILITIES / WITHDRAWABLE LAND
- CONVERTIBLE SPACE / WITHDRAWABLE LAND
- PRIVATE SPACE / WITHDRAWABLE LAND

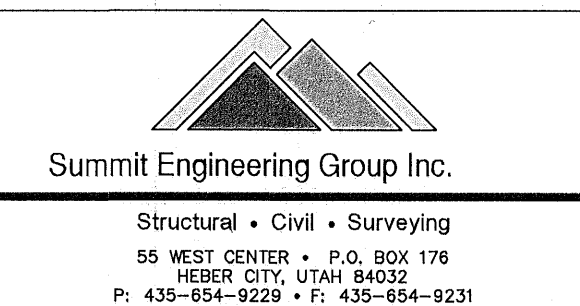


BASEMENT LEVEL
SCALE 1"=5'

LAKE RESIDENCES AT BEAR LAKE PHASE 8B

LOCATED IN THE NORTHWEST 1/4 OF SECTION 21, TOWNSHIP 14 NORTH, RANGE 5 EAST, SLB&M, GARDEN CITY, RICH COUNTY, UTAH

PROJECT
C19-027
SHEET
5 OF 7
ISSUE DATE
12/08/2021



COPYRIGHT © 2021
SUMMIT ENGINEERING GROUP, INC.
DRAWING ALTERATION
IT IS A VIOLATION OF LAW FOR ANY PERSON, UNLESS ACTING UNDER THE DIRECTION OF THE PROFESSIONAL LAND SURVEYOR TO ALTER ANY ITEM ON THIS DOCUMENT IN ANY MANNER. ANY SUCH ALTERATION OF THIS DOCUMENT IS PROHIBITED. ANY ALTERATION SHALL BE FOLLOWED BY THE NOTATION "ALTERED BY" FOLLOWED BY THEIR SIGNATURE AND SPECIFIC DESCRIPTION OF THE ALTERATIONS.