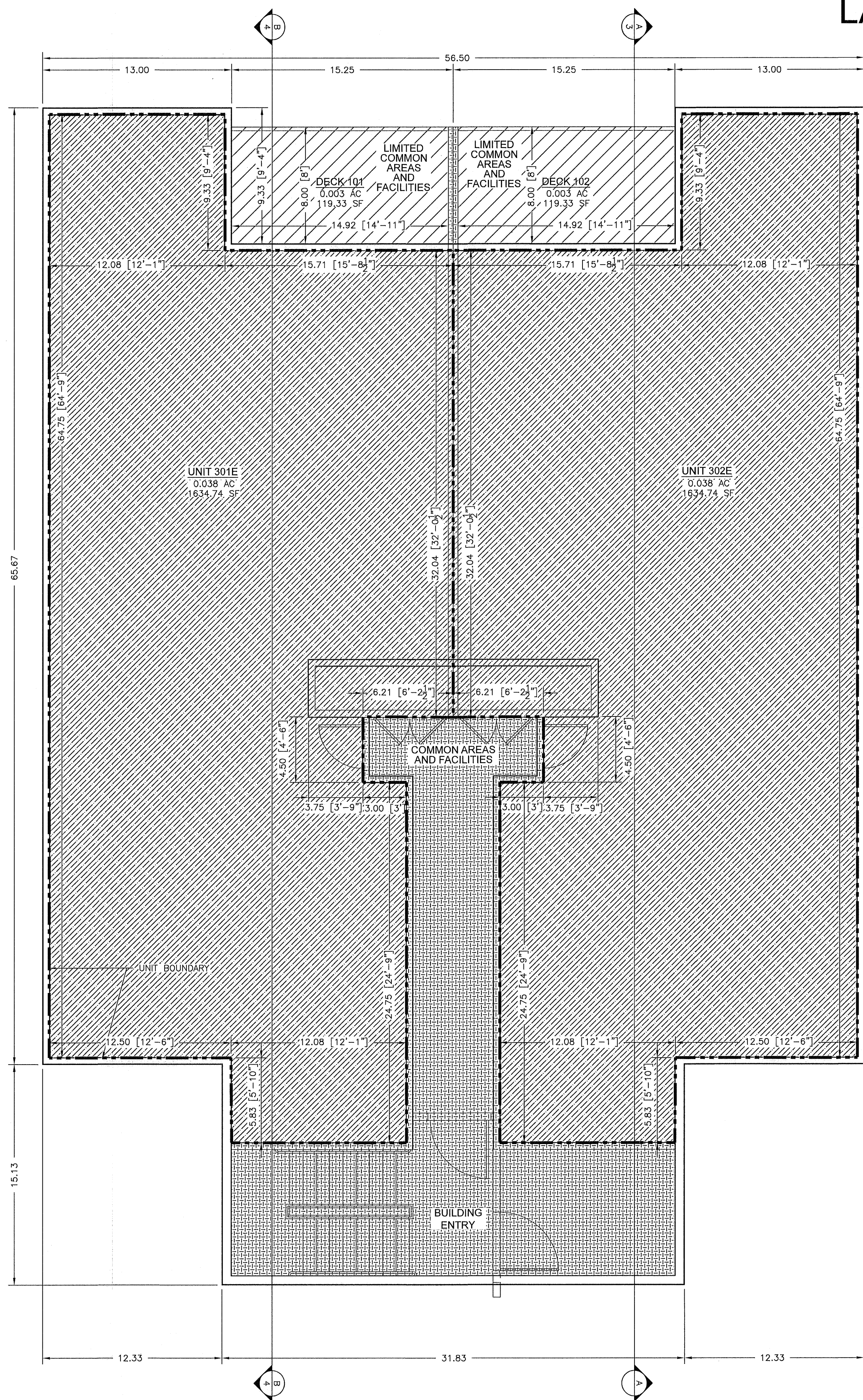
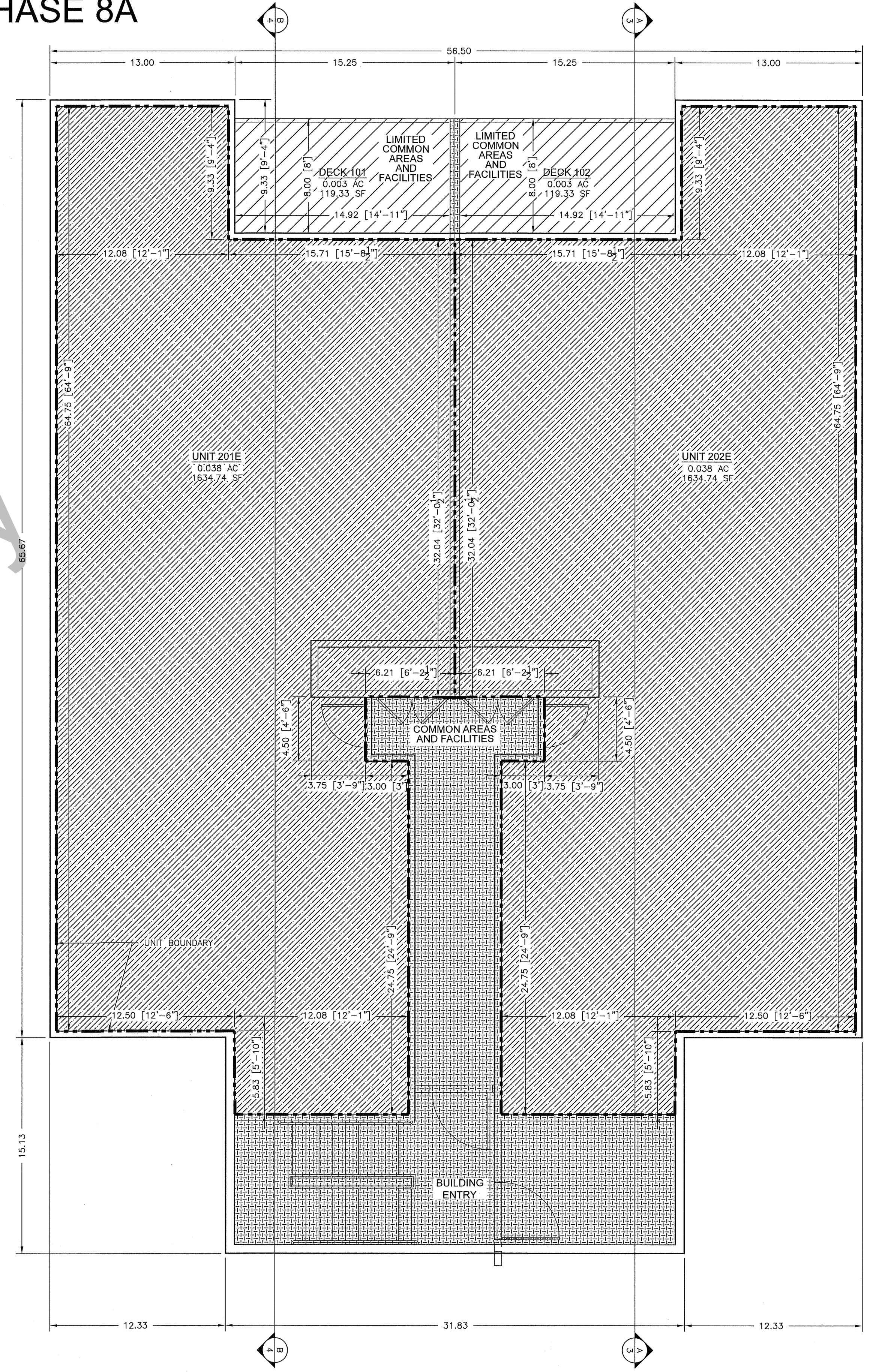


LAKE RESIDENCES AT BEAR LAKE PHASE 8A



THIRD FLOOR
SCALE 1"=5'



SECOND FLOOR
SCALE 1"=5'

LEGEND

	UNIT BOUNDARY
	COMMON AREAS AND FACILITIES* / WITHDRAWABLE LAND
	LIMITED COMMON AREAS AND FACILITIES / WITHDRAWABLE LAND
	PRIVATE SPACE / WITHDRAWABLE LAND

Internet Copy

PROJECT
C19-027

SHEET
6 OF 7

ISSUE DATE
10/19/2021

Summit Engineering Group Inc.
Structural • Civil • Surveying
55 WEST CENTER • P.O. BOX 176
REBER CITY, UTAH 84032
P: 435-854-9229 • F: 435-854-9231

COPYRIGHT © 2021
SUMMIT ENGINEERING GROUP, INC.
DRAWING ALTERATION
IT IS A VIOLATION OF LAW FOR ANY PERSON, UNLESS ACTING UNDER THE DIRECTION OF THE PROFESSIONAL LAND SURVEYOR TO ALTER ANY ITEM ON THIS DOCUMENT IN ANY WAY. ANY LICENSEE WHO ALTERS THIS DOCUMENT IS REQUIRED BY LAW TO AFFIX THEIR SEAL AND THE NOTATION "ALTERED BY" FOLLOWED BY THEIR SIGNATURE AND SPECIFIC DESCRIPTION OF THE ALTERATIONS.

LAKE RESIDENCES AT BEAR LAKE PHASE 8A

LOCATED IN THE NORTHWEST ¼ OF SECTION 21, TOWNSHIP 14 NORTH, RANGE 5 EAST, SLB&M, GARDEN CITY, RICH COUNTY, UTAH