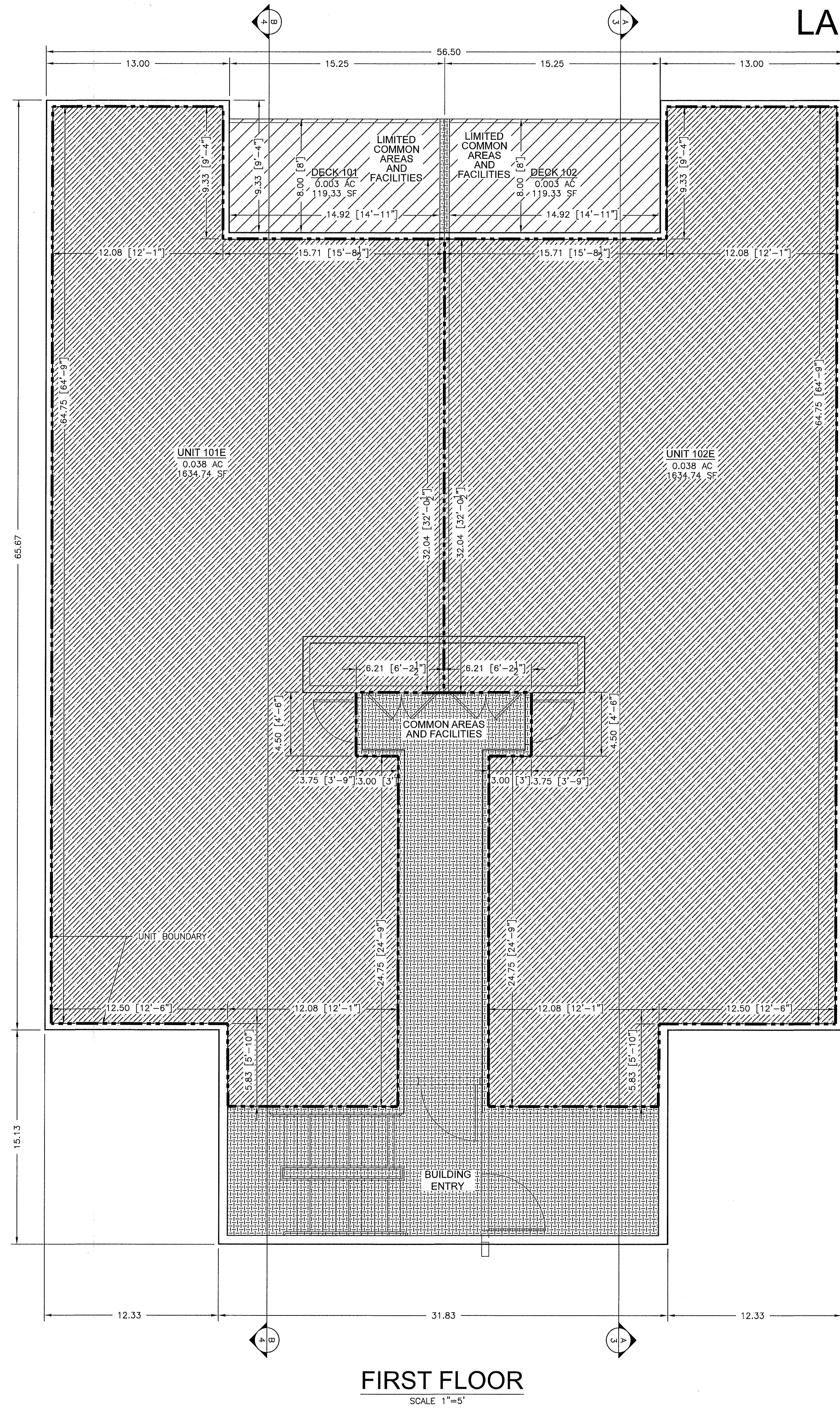


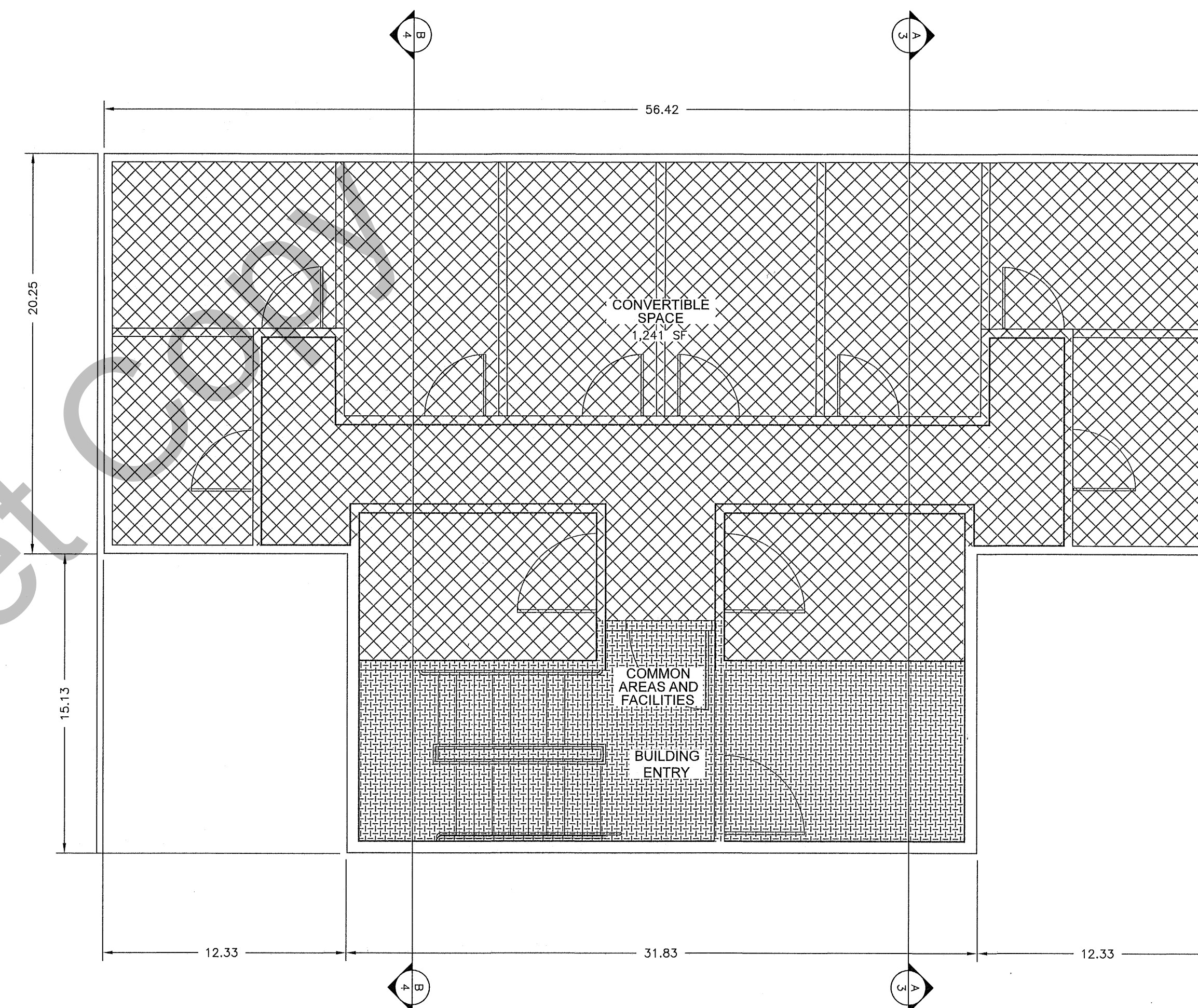
LAKE RESIDENCES AT BEAR LAKE PHASE 8A



FIRST FLOOR
SCALE 1"=5'

LEGEND

- UNIT BOUNDARY
- COMMON AREAS AND FACILITIES* / WITHDRAWABLE LAND
- LIMITED COMMON AREAS AND FACILITIES / WITHDRAWABLE LAND
- CONVERTIBLE SPACE / WITHDRAWABLE LAND
- PRIVATE SPACE / WITHDRAWABLE LAND

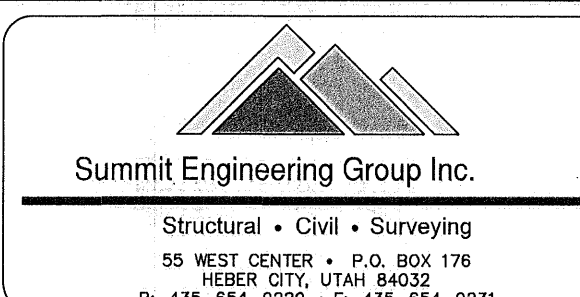


BASEMENT LEVEL
SCALE 1"=5'

PROJECT
C19-027

SHEET
5 OF 7

ISSUE DATE
10/19/2021



COPYRIGHT © 2021
SUMMIT ENGINEERING GROUP, INC.
DRAWING ALTERATION
IT IS A VIOLATION OF LAW FOR ANY
PERSON UNLESS ACTING UNDER THE
DIRECTION OF THE PROFESSIONAL LAND
SURVEYOR TO ALTER ANY ITEM ON THIS
DOCUMENT IN ANY WAY. ANY LICENSEE WHO
ALTERS THIS DOCUMENT IS REQUIRED BY
LAW TO AFFIX THEIR SEAL AND THE
NOTATION "ALTERED BY" FOLLOWED BY
THEIR SIGNATURE AND SPECIFIC DESCRIPTION
OF THE ALTERATION.

LAKE RESIDENCES AT BEAR LAKE PHASE 8A

LOCATED IN THE NORTHWEST ¼ OF SECTION 21, TOWNSHIP 14 NORTH, RANGE 5 EAST, SLB&M,
GARDEN CITY, RICH COUNTY, UTAH