
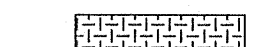
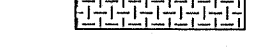
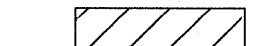
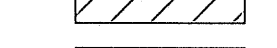
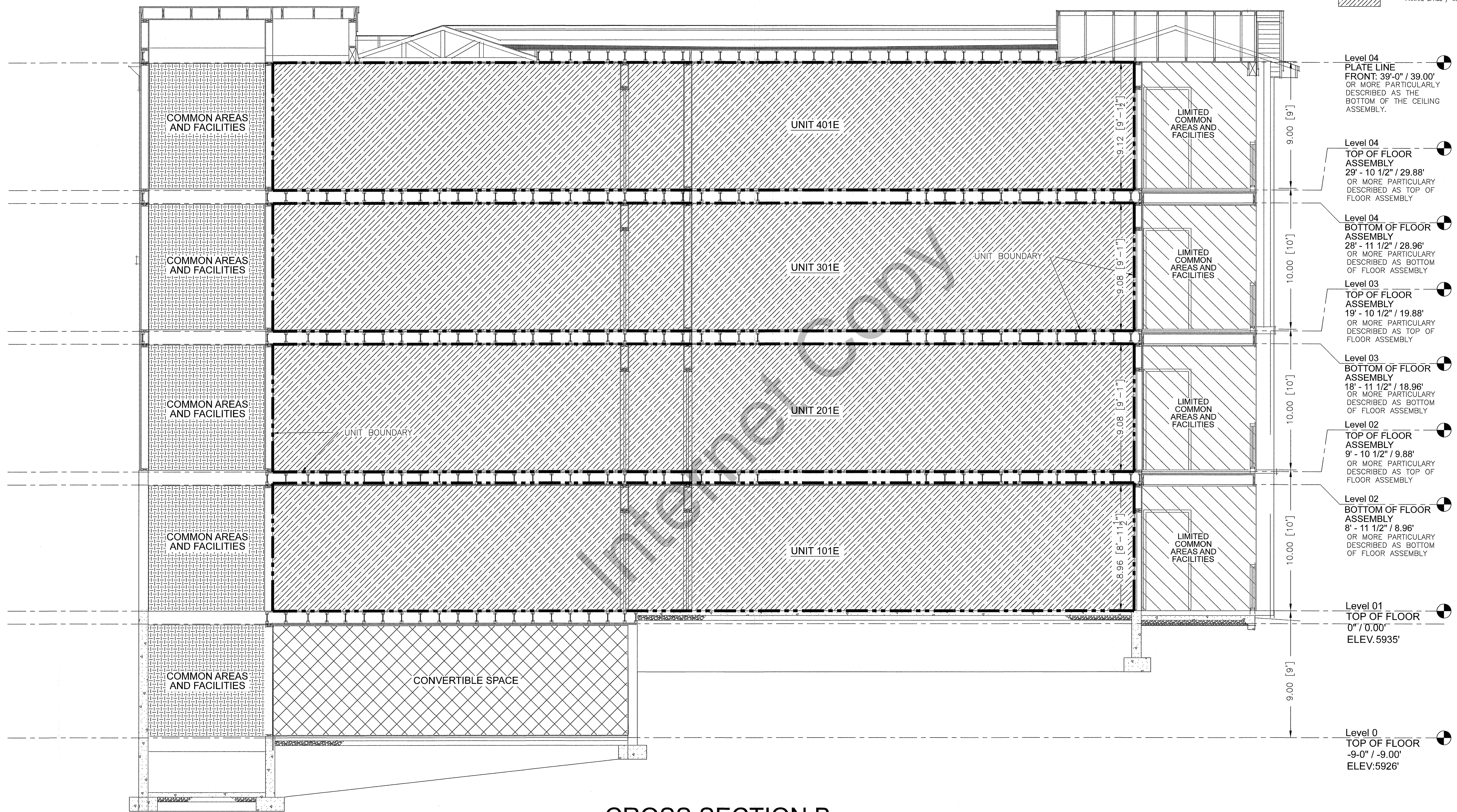


LAKE RESIDENCES AT BEAR LAKE PHASE 8A

LEGEND

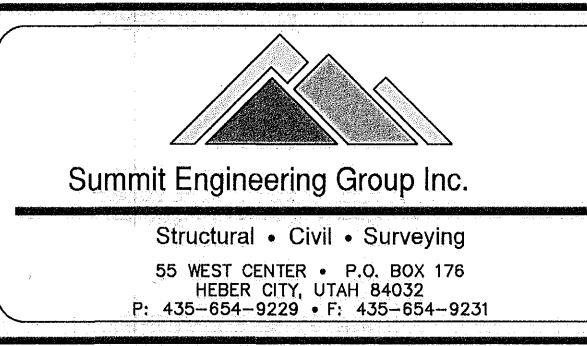
-  UNIT BOUNDARY
-  COMMON AREAS AND FACILITIES* / WITHDRAWABLE LAND
-  LIMITED COMMON AREAS AND FACILITIES / WITHDRAWABLE LAND
-  CONVERTIBLE SPACE / WITHDRAWABLE LAND
-  PRIVATE SPACE / WITHDRAWABLE LAND



CROSS SECTION B

SCALE 1"=5'

PROJECT
C19-027
SHEET
4 OF 7
ISSUE DATE
10/19/2021



COPYRIGHT © 2021
SUMMIT ENGINEERING GROUP, INC.
DRAWING ALTERATION
IT IS A VIOLATION OF LAW FOR ANY PERSON UNLESS ACTING UNDER THE DIRECTION OF THE PROFESSIONAL LAND SURVEYOR TO ALTER ANY ITEM ON THIS DOCUMENT IN ANY WAY. ANY LICENSEE WHO ALTERS THIS DOCUMENT IS REQUIRED BY LAW TO AFFIX THEIR SEAL AND THE NOTATION "ALTERED BY" FOLLOWED BY THEIR SIGNATURE AND SPECIFIC DESCRIPTION OF THE ALTERATION.

LAKE RESIDENCES AT BEAR LAKE PHASE 8A

LOCATED IN THE NORTHWEST ¼ OF SECTION 21, TOWNSHIP 14 NORTH, RANGE 5 EAST, SLB&M, GARDEN CITY, RICH COUNTY, UTAH