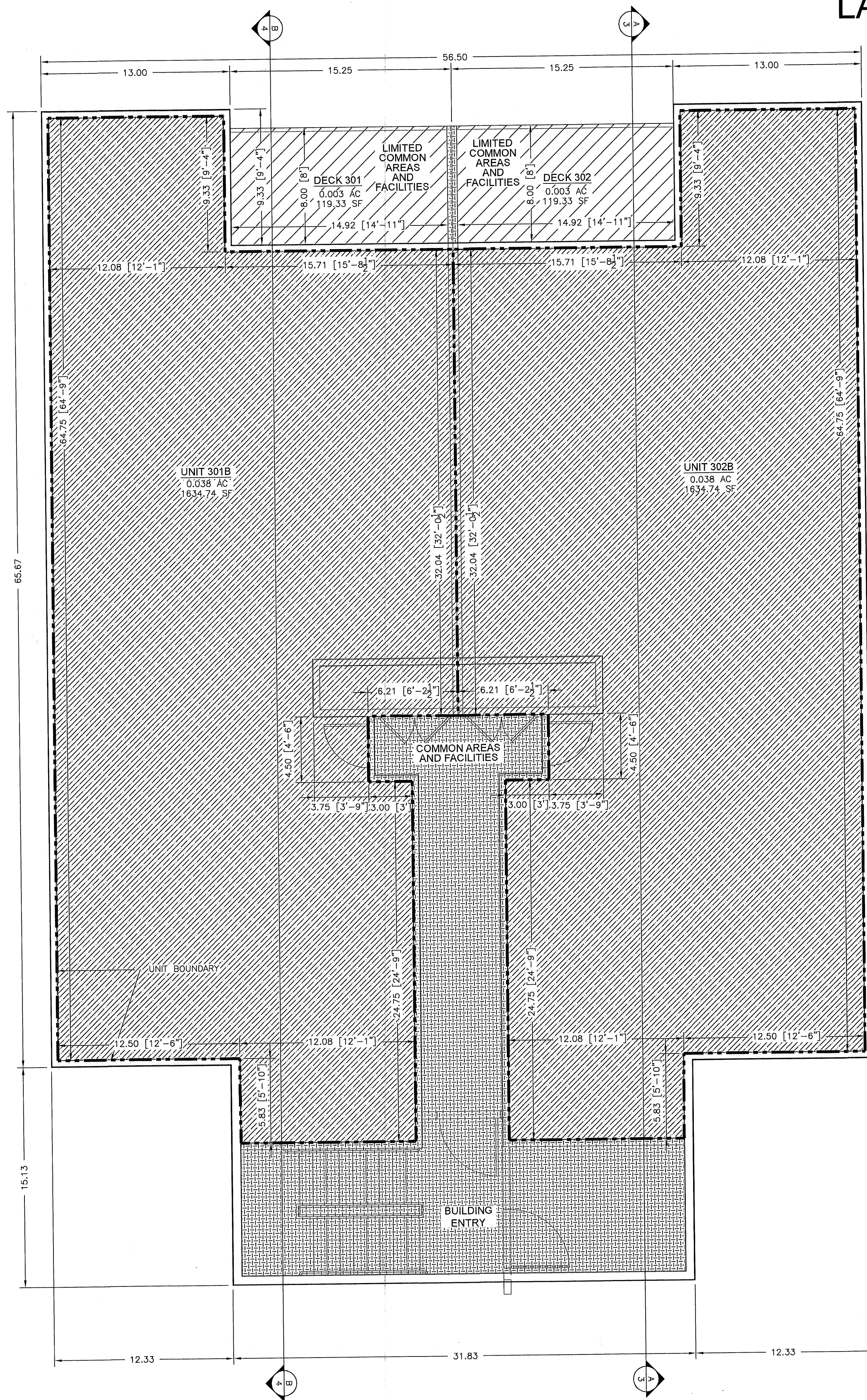
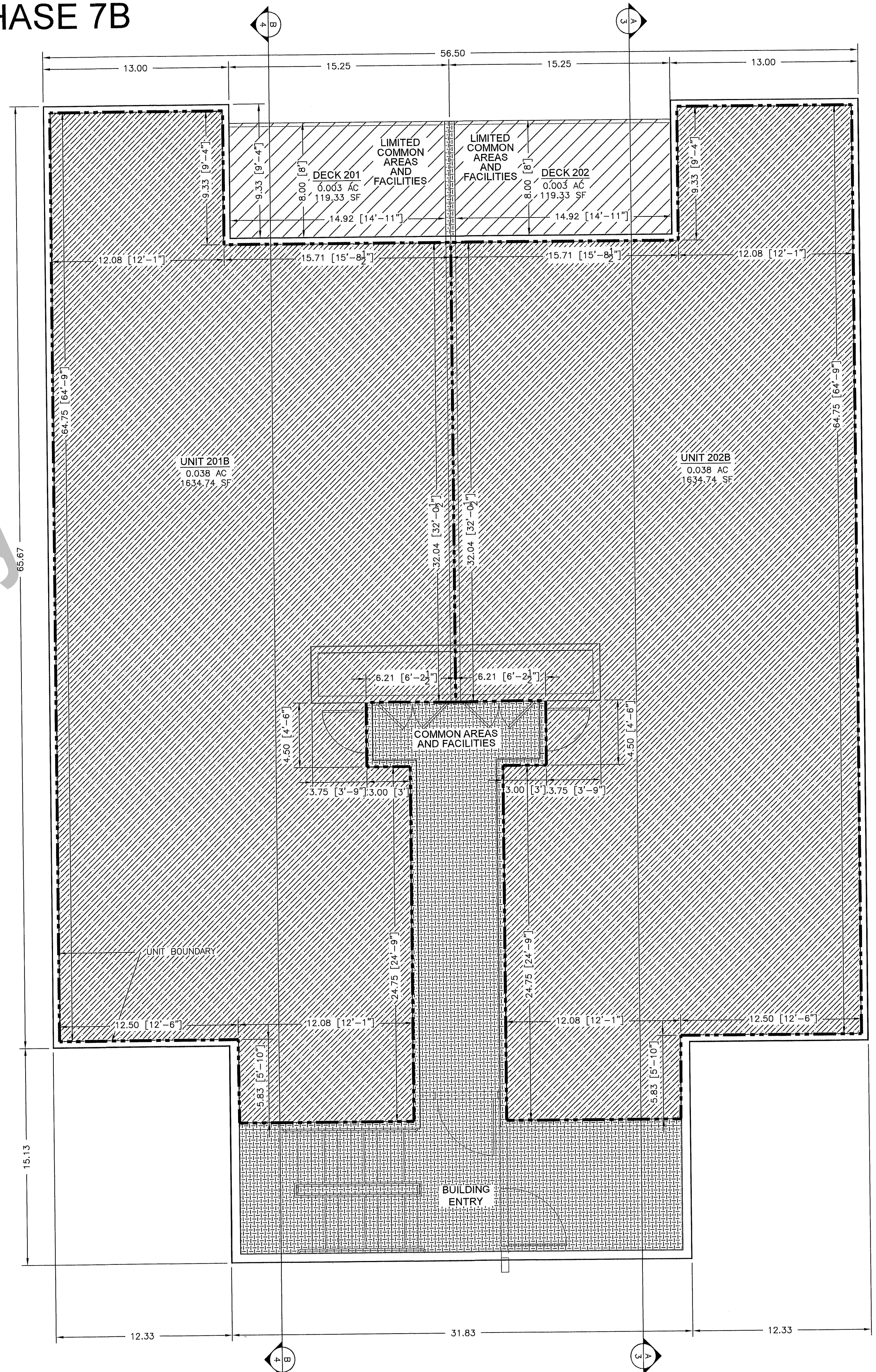


LAKE RESIDENCES AT BEAR LAKE PHASE 7B



THIRD FLOOR
SCALE 1"=5'



SECOND FLOOR
SCALE 1"=5'

LEGEND

| | |
|--|---|
| | UNIT BOUNDARY |
| | COMMON AREAS AND FACILITIES* / WITHDRAWABLE LAND |
| | LIMITED COMMON AREAS AND FACILITIES / WITHDRAWABLE LAND |
| | PRIVATE SPACE / WITHDRAWABLE LAND |

Internet Copy

| | | |
|--------------------|--|---|
| PROJECT C19-027 | Summit Engineering Group Inc. Structural • Civil • Surveying 55 WEST CENTER • P.O. BOX 176 HERRING CITY, UTAH 84032 P: 435-854-9229 • F: 435-654-9231 | COPYRIGHT © 2022 SUMMIT ENGINEERING GROUP, INC. DRAWING ALTERATION IT IS A VIOLATION OF LAW FOR ANY PERSON, UNLESS ACTING UNDER THE DIRECTION OF THE PROFESSIONAL LAND SURVEYOR TO ALTER ANY ITEM ON THIS DOCUMENT IN ANY WAY. ANY USER WHO ALTERS THIS DOCUMENT IS REQUIRED BY LAW TO AFFIX THEIR SEAL AND THE NOTATION "ALTERED BY" FOLLOWED BY THEIR SIGNATURE AND SPECIFICATION OF THE ALTERATION. |
|--------------------|--|---|

LAKE RESIDENCES AT BEAR LAKE PHASE 7B

LOCATED IN THE NORTHWEST ¼ OF SECTION 21, TOWNSHIP 14 NORTH, RANGE 5 EAST, SLB&M, GARDEN CITY, RICH COUNTY, UTAH