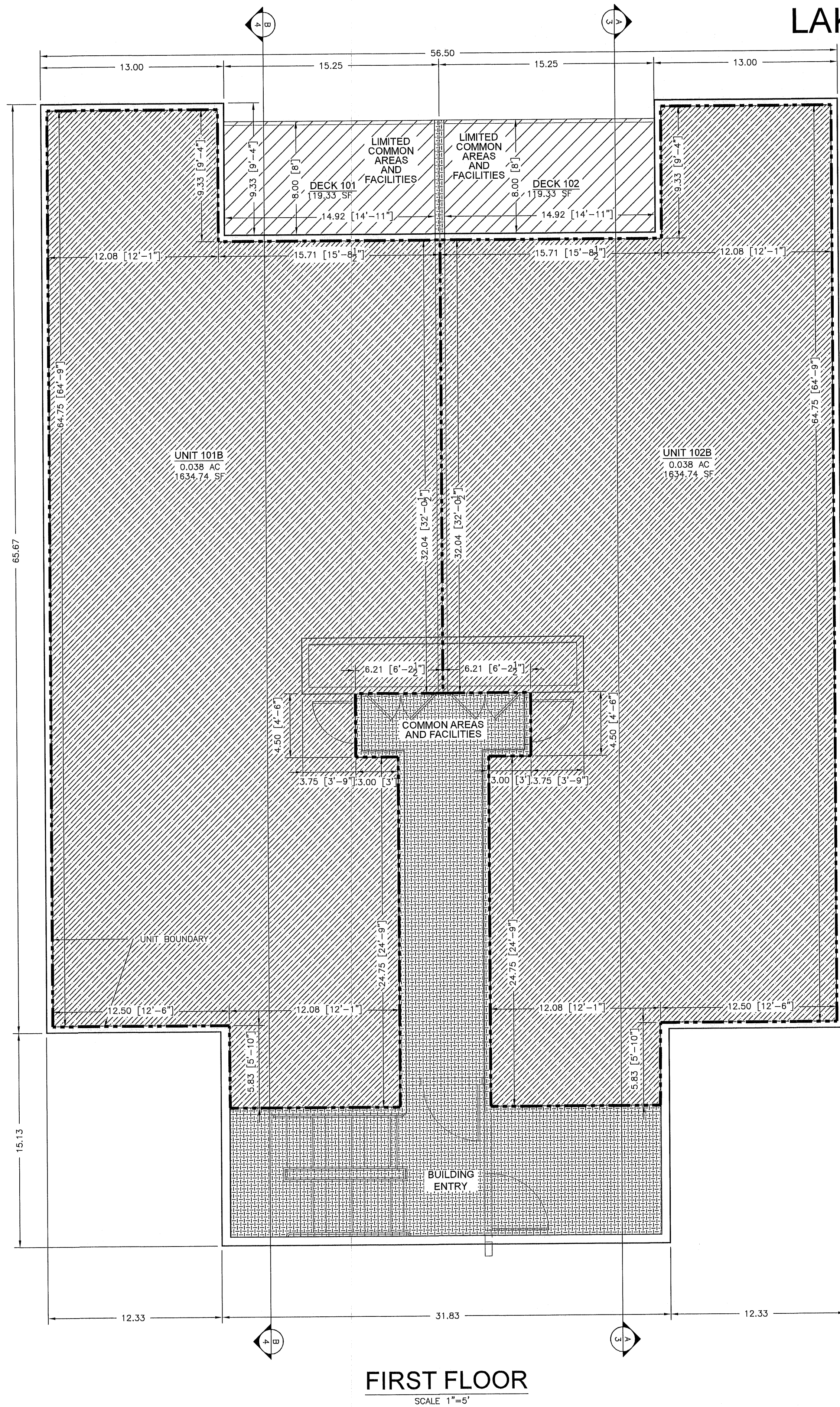


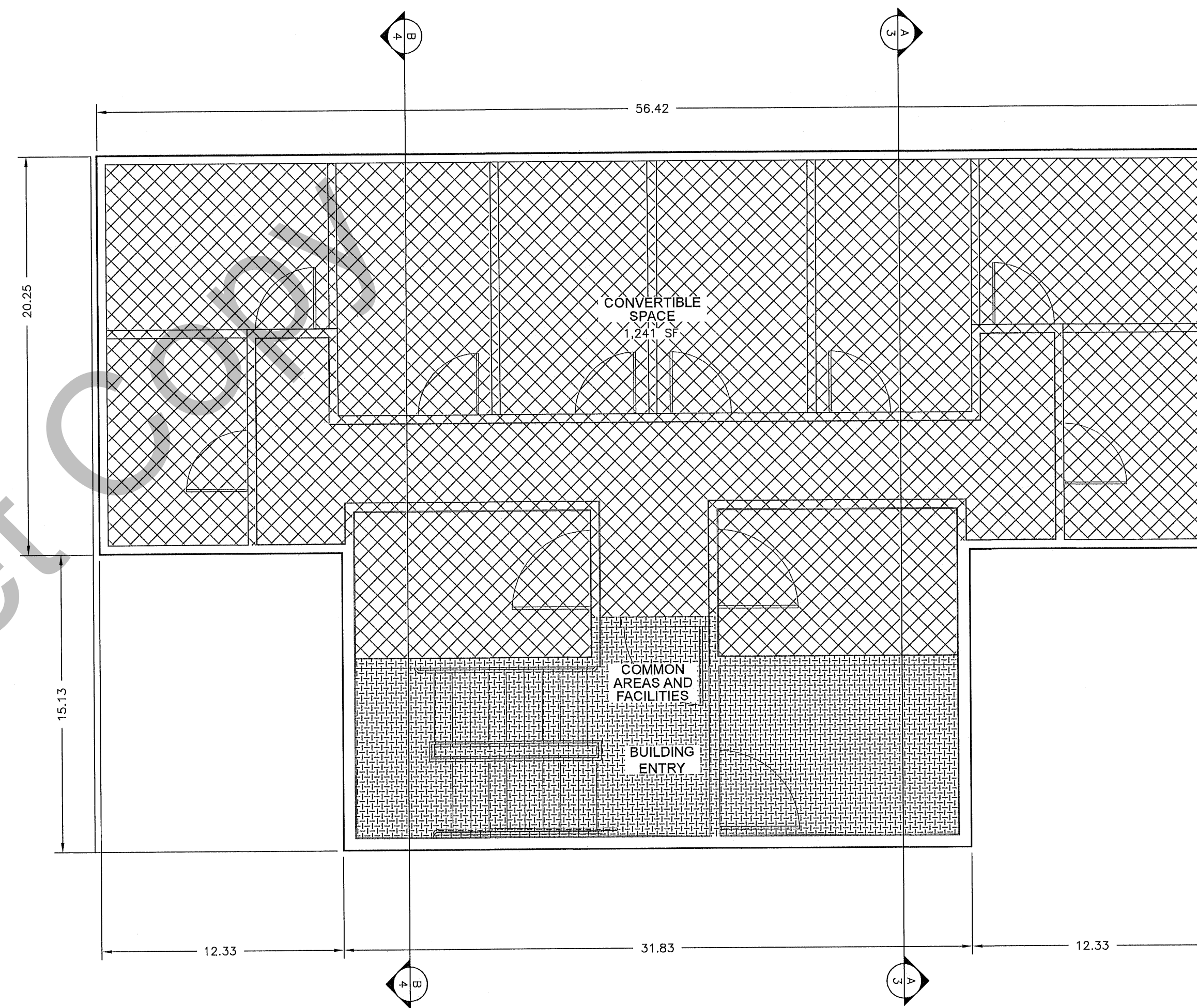
LAKE RESIDENCES AT BEAR LAKE PHASE 7B



FIRST FLOOR
SCALE 1"=5'

LEGEND

- UNIT BOUNDARY
- COMMON AREAS AND FACILITIES* / WITHDRAWABLE LAND
- LIMITED COMMON AREAS AND FACILITIES / WITHDRAWABLE LAND
- CONVERTIBLE SPACE / WITHDRAWABLE LAND
- PRIVATE SPACE / WITHDRAWABLE LAND



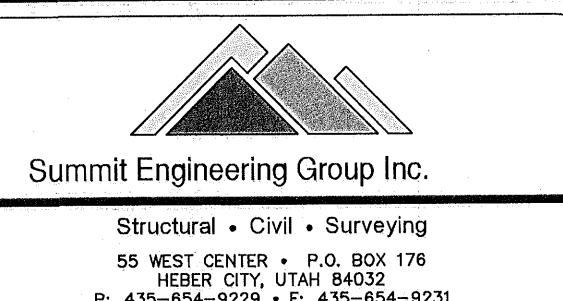
BASEMENT LEVEL
SCALE 1"=5'

Internet.com

PROJECT
C19-027

SHEET
5 OF 7

ISSUE DATE
02/14/2022



© COPYRIGHT © 2022
SUMMIT ENGINEERING GROUP, INC.
DRAWING ALTERATION
IT IS A VIOLATION OF LAW FOR ANY PERSON UNLESS ACTING UNDER THE DIRECTION OF THE PROFESSIONAL LAND SURVEYOR TO ALTER ANY ITEM ON THIS DOCUMENT IN ANY WAY. ANY LICENSEE WHO ALTERS THIS DOCUMENT IS REQUIRED BY LAW TO AFFIX THEIR SEAL AND THE NOTATION "ALTERED BY" FOLLOWED BY THEIR SIGNATURE AND SPECIAL DESCRIPTION OF THE ALTERATIONS.

LAKE RESIDENCES AT BEAR LAKE PHASE 7B

LOCATED IN THE NORTHWEST ¼ OF SECTION 21, TOWNSHIP 14 NORTH, RANGE 5 EAST, SLB&M,
GARDEN CITY, RICH COUNTY, UTAH