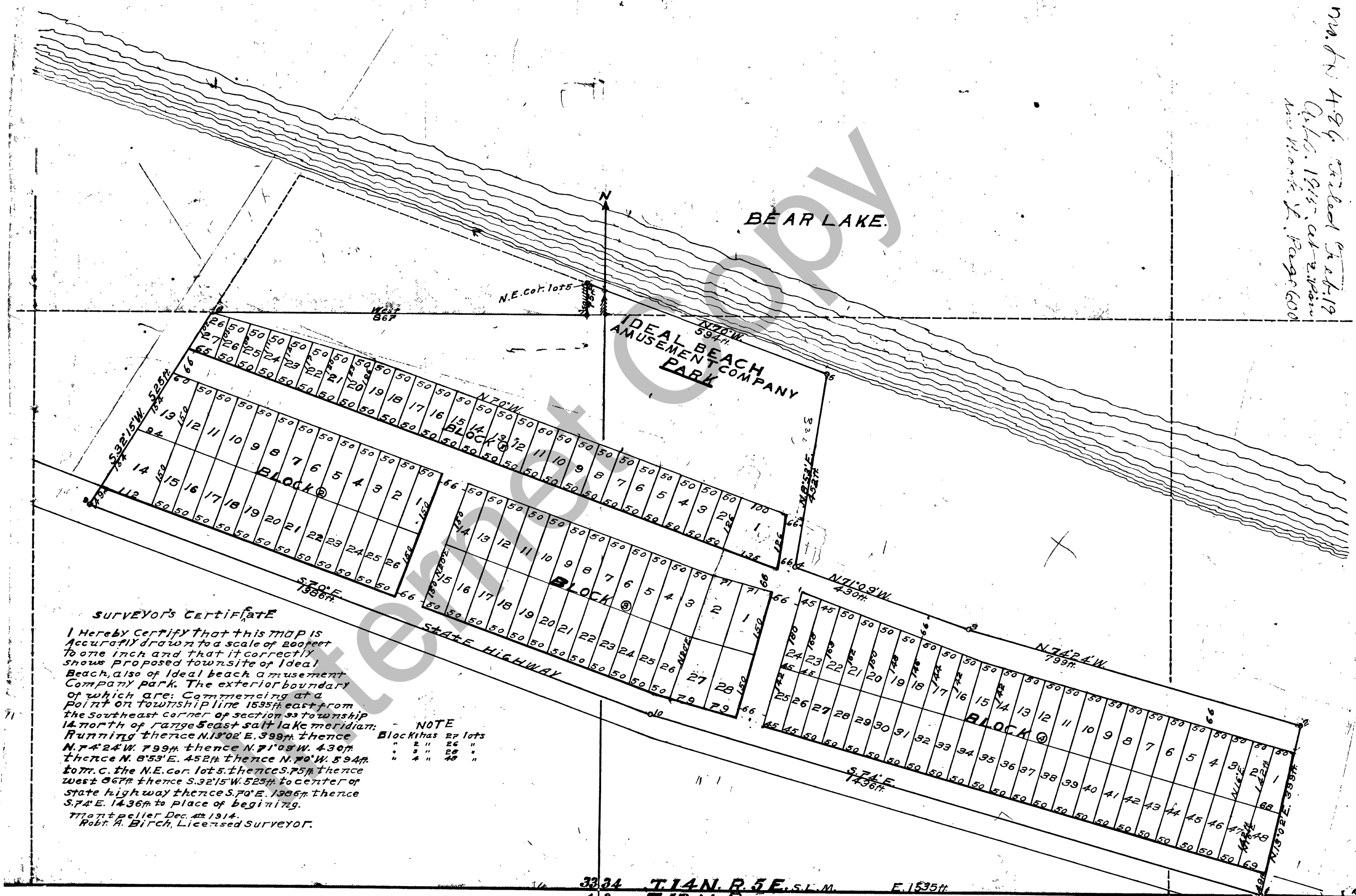


Map No. 484  
 Subd. 1915, at 2.10  
 No. 1000



**SURVEYOR'S CERTIFICATE**

I hereby certify that this map is accurately drawn to a scale of 200 feet to one inch and that it correctly shows proposed townsite of Ideal Beach, also of Ideal beach amusement company park. The exterior boundary of which are: Commencing at a point on township line 1535 ft east from the southeast corner of section 33 township 14 north of range 5 east salt lake meridian. Running thence N. 13° 02' E. 399 ft thence N. 74° 24' W. 799 ft thence N. 71° 03' W. 430 ft thence N. 6° 53' E. 452 ft thence N. 70° W. 594 ft to m. c. the N.E. cor. lots. thence S. 75 ft thence west 86 ft thence S. 32° 15' W. 528 ft to center of state highway thence S. 70° E. 1306 ft thence S. 74° E. 1436 ft to place of beginning.

**NOTE**  
 Block has 87 lots  
 " " 22 " 22 "  
 " " 3 " 30 "

Montpelier Dec. 22 1914.  
 Robt. A. Birch, Licensed Surveyor.

3334 T. 14 N. R. 5 E. S. 1 W. E. 1535 ft