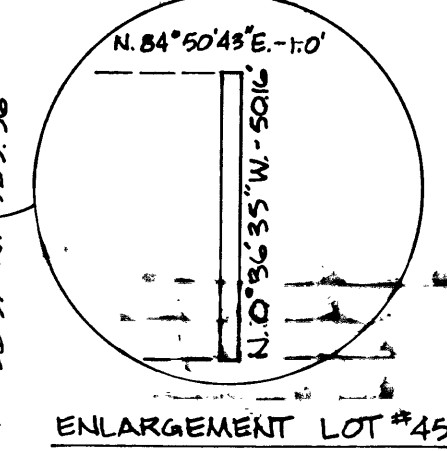
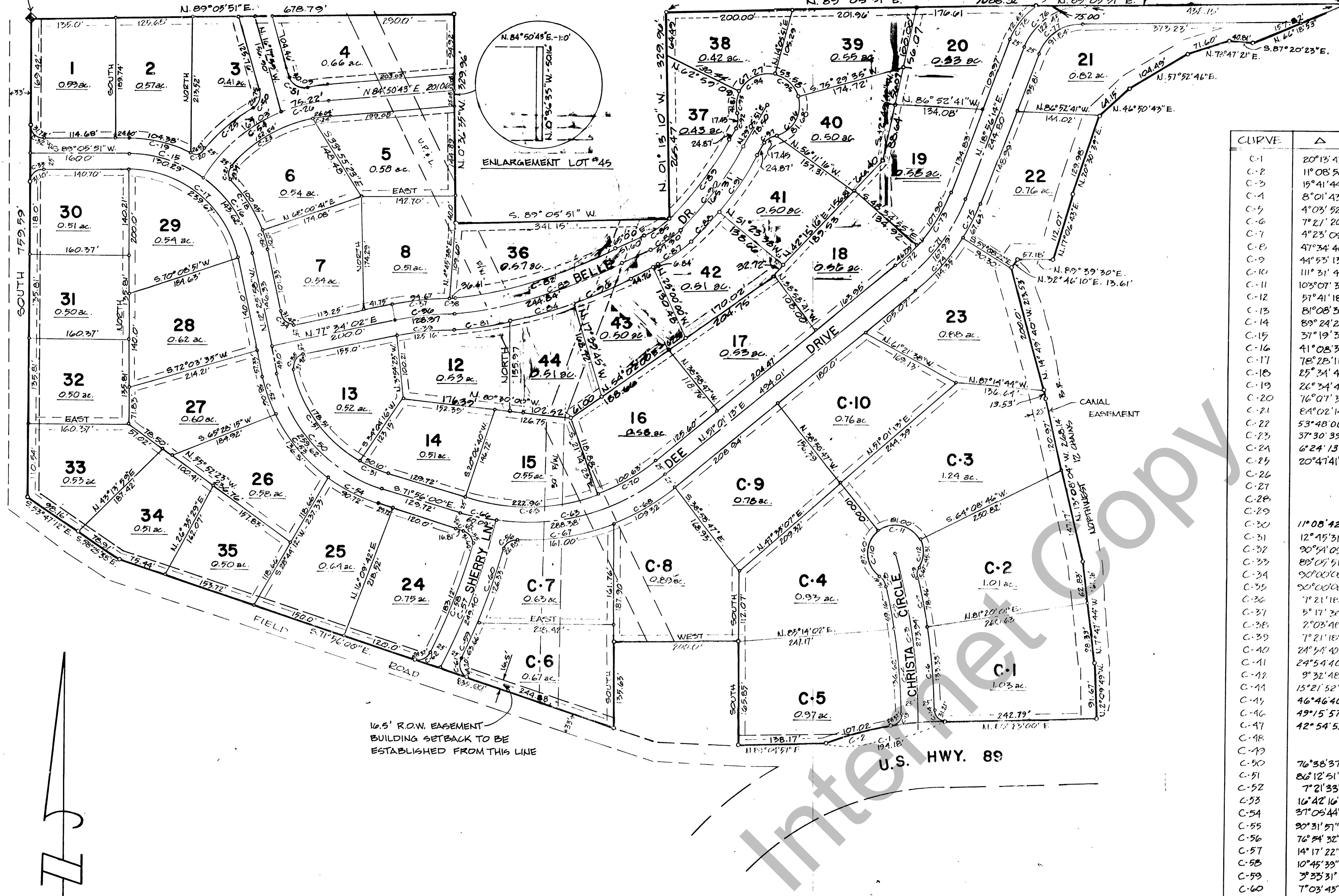


POINT OF BEGINNING
NORTH 1/4 COR., SEC. 20
T.14N., R.5E., S.L.B. & M.



CURVE	Δ	RADIUS	LENGTH	CHORD	TANGENT
C-1	20°15'43"	550.00'	194.16'	193.17'	98.11'
C-2	11°08'56"	590.00'	107.02'	106.89'	53.68'
C-3	15°41'44"	1000.00'	273.94'	273.08'	137.83'
C-4	8°01'43"	975.00'	136.62'	136.51'	68.42'
C-5	4°03'52"	975.00'	69.16'	69.15'	34.60'
C-6	7°21'20"	1025.00'	139.38'	139.29'	69.78'
C-7	4°23'09"	1025.00'	78.46'	78.44'	39.25'
C-8	47°34'40"	20.00'	16.61'	16.61'	8.26'
C-9	44°53'13"	20.00'	15.67'	15.67'	7.84'
C-10	111°31'46"	45.00'	81.60'	79.41'	41.80'
C-11	103°07'35"	45.00'	81.00'	70.50'	36.70'
C-12	91°41'18"	45.00'	45.31'	43.42'	24.76'
C-13	81°08'51"	20.00'	28.32'	28.32'	17.12'
C-14	89°24'21"	20.00'	31.21'	31.21'	19.79'
C-15	37°19'33"	200.00'	180.29'	128.00'	67.55'
C-16	41°08'38"	200.00'	143.62'	142.55'	75.06'
C-17	78°28'11"	175.00'	239.67'	221.38'	112.90'
C-18	25°34'45"	225.00'	104.45'	99.42'	51.08'
C-19	76°07'39"	20.00'	26.57'	26.57'	13.29'
C-20	64°02'14"	20.00'	29.34'	26.76'	16.02'
C-21	53°48'00"	271.992'	242.25'	233.45'	130.89'
C-22	37°30'39"	232.992'	152.54'	149.83'	79.11'
C-23	6°24'13"	232.992'	26.04'	26.03'	13.03'
C-24	20°47'41"	282.79'	102.71'	102.14'	51.92'
C-25					
C-26					
C-27					
C-28					
C-29					
C-30	11°08'42"	282.992'	55.05'	54.96'	27.61'
C-31	12°45'31"	225.00'	90.10'	90.00'	45.05'
C-32	30°41'09"	20.00'	31.73'	31.73'	15.87'
C-33	89°07'51"	20.00'	31.10'	31.10'	15.55'
C-34	90°00'00"	20.00'	3.42'	3.42'	1.71'
C-35	90°00'00"	20.00'	3.42'	3.42'	1.71'
C-36	7°21'18"	1000.00'	128.21'	128.28'	64.11'
C-37	5°17'30"	1025.00'	94.67'	94.63'	47.31'
C-38	2°08'46"	1025.00'	36.91'	36.91'	18.46'
C-39	7°21'18"	975.00'	125.16'	125.08'	62.54'
C-40	24°54'40"	450.00'	191.45'	191.19'	95.59'
C-41	24°54'40"	450.00'	184.28'	183.33'	92.17'
C-42	9°32'48"	475.00'	79.15'	79.05'	39.54'
C-43	15°21'52"	475.00'	127.38'	127.00'	63.50'
C-44	46°46'40"	119.25'	97.36'	94.68'	47.34'
C-45	49°15'57"	144.25'	124.03'	120.25'	60.14'
C-46	42°54'53"	94.25'	70.59'	68.96'	34.48'
C-47					
C-48					
C-49					
C-50	76°38'37"	20.00'	26.75'	24.80'	12.40'
C-51	86°12'51"	20.00'	30.09'	27.33'	13.67'
C-52	7°21'33"	282.99'	36.35'	36.32'	18.16'
C-53	16°42'16"	257.99'	75.22'	74.95'	37.48'
C-54	37°05'44"	297.99'	167.08'	164.13'	82.06'
C-55	30°31'57"	20.00'	31.60'	31.60'	15.80'
C-56	76°24'32"	20.00'	26.85'	26.85'	13.43'
C-57	14°17'22"	1000.00'	249.40'	248.75'	124.38'
C-58	10°45'39"	975.00'	183.12'	182.85'	91.43'
C-59	7°03'43"	1025.00'	63.64'	63.65'	31.84'
C-60	7°03'43"	1025.00'	124.33'	124.25'	62.13'
C-61	97°57'59"	20.00'	34.20'	34.18'	17.09'
C-62	81°16'38"	20.00'	28.57'	28.05'	14.03'
C-63	47°12'32"	590.00'	288.56'	280.29'	140.15'
C-64	1°34'09"	575.00'	16.81'	16.81'	8.41'
C-65	9°20'15"	590.00'	60.09'	60.02'	30.01'
C-66	24°35'55"	375.00'	161.00'	159.77'	80.89'
C-67	16°42'08"	375.00'	109.32'	108.93'	54.47'
C-68	39°18'23"	325.00'	222.96'	218.61'	109.31'
C-69	17°44'24"	325.00'	100.63'	100.23'	50.12'
C-70	32°04'39"	300.00'	167.99'	165.80'	82.90'
C-71	9°36'08"	275.00'	46.09'	46.03'	23.01'
C-72	22°28'51"	275.00'	107.90'	107.21'	53.61'
C-73	20°09'35"	114.35'	113.76'	113.76'	56.88'
C-74	11°55'24"	325.00'	67.63'	67.51'	33.76'
C-75	70°09'36"	100.00'	122.45'	114.94'	57.47'
C-76	10°09'36"	75.00'	91.84'	86.21'	43.11'
C-77	35°17'25"	125.00'	78.63'	78.63'	39.32'
C-78	36°52'11"	125.00'	80.44'	79.06'	40.53'
C-79	5°05'41"	225.00'	20.01'	20.00'	10.00'
C-80	4°31'52"	723.14'	57.06'	57.06'	28.53'
C-81	17°55'20"	679.15'	236.15'	234.26'	117.13'
C-82	19°55'20"	704.15'	243.61'	243.61'	121.81'
C-83	8°05'14"	729.15'	102.49'	102.41'	51.21'
C-84	20°00'00"	165.00'	60.32'	60.32'	30.16'
C-85	20°00'00"	165.00'	60.32'	60.32'	30.16'
C-86	6°25'39"	620.00'	69.26'	69.22'	34.61'

SURVEYOR'S CERTIFICATE

I, MICHAEL L. LUND, A REGISTERED LAND SURVEYOR IN THE STATE OF UTAH, DO HEREBY CERTIFY THAT THIS PLAN OF FOOTHILL ESTATES LOCATED IN RICH COUNTY, UTAH HAS BEEN CORRECTLY DRAWN TO THE DESIGNATED SCALE AND IS A TRUE AND CORRECT REPRESENTATION OF THE FOLLOWING DESCRIBED TRACT OF LAND INCLUDED IN THIS SUBDIVISION, BASED ON DATA COMPILED FROM THE COUNTY RECORDER'S OFFICE AND FROM A SURVEY MADE ON THE GROUND.

SIGNED THIS 29TH DAY OF MAY, 1980.

Michael L. Lund
MICHAEL L. LUND, CLS, NO. 4613

BOUNDARY DESCRIPTION

BEGINNING AT THE NORTH 1/4 COR., SEC. 20, T.14N., R.5E., S.L.B. & M. PLUNNING THENCE N.89°05'51"E. ALONG THE NORTH LINE OF SAID SEC. 20, 678.79'; THENCE S.0°36'35"E, 329.92'; THENCE N.89°05'51"E, 341.15'; THENCE N.1°13'10"W, 329.96'; TO SAID NORTH LINE OF SEC. 20; THENCE N.89°05'51"E. ALONG SAID NORTH LINE 1086.32' TO THE EAST SIDE OF A CANAL; THENCE FOLLOWING SAID EAST SIDE OF THE FOLLOWING 7 COURSES: (1) S.66°18'53"W, 157.87'; (2) N.87°20'23"W, 40.81'; (3) S.75°47'21"W, 104.49'; (4) S.4°50'48"W, 64.19'; (5) S.20°30'38"W, 129.90'; (6) S.17°06'43"W, 112.07'; THENCE LEAVING SAID EAST SIDE OF CANAL, S.89°29'30"W, 91.16' TO THE CENTERLINE OF ANOTHER CANAL; THENCE FOLLOWING SAID CENTERLINE OF CANAL THE FOLLOWING 5 COURSES: (1) S.32°46'10"W, 13.61'; (2) S.14°49'40"E, 219.33'; (3) S.13°08'04"E, 28.84'; (4) S.7°41'44"E, 161.11'; (5) S.2°09'49"E, 91.67' TO THE NORTH LINE OF U.S. HWY. 89; THENCE S.89°29'30"W, ALONG SAID NORTH LINE 242.79'; THENCE 194.16' ALONG SAID NORTH LINE, ALONG THE ARC OF A 550' RADIUS CURVE TO THE LEFT WHOSE LONG CHORD BEARS S.79°16'08"W, 193.17' TO THE NORTH LINE ON A FIELD ROAD; THENCE S.89°04'51"W, ALONG SAID NORTH LINE, 128.17'; THENCE NORTH, 165.83'; THENCE WEST 200'; THENCE SOUTH, 135.63' TO SAID NORTH LINE OF FIELD ROAD; THENCE FOLLOWING SAID NORTH LINE & THE EAST LINE OF SAID FIELD ROAD THE FOLLOWING 4 COURSES: (1) S.56°00'00"W, 835.00'; (2) N.25°25'30"W, 78.91'; (3) N.53°47'12"W, 98.16'; (4) NORTH 799.59' TO THE POINT OF BEGINNING, CONTAINING 34.8 ACRES.

OWNER'S DEDICATION

KNOW ALL MEN BY THESE PRESENTS THAT WE, THE UNDERSIGNED, WHO ARE OWNERS OF FOOTHILL ESTATES, SUBDIVISION HAVING CAUSED THE SAME TO BE SUBDIVIDED INTO LOTS AND CURVES AS SHOWN ON THIS PLAN, DO HEREBY GRANT AND DEDICATE TO THE PERPETUAL USE OF THE PUBLIC, ALL PORTIONS OF LAND SHOWN AS STREETS OR ROADS ON SAID PLAN.

- Maon F. Ridley*
- Blaine W. Curtis*
- Robert W. Thumrell*
- Gene L. Hummel*
- Arlo B. Price*
- Matthew H. Price*
- Michael L. Lund*
- Michael B. Murrell*
- Clarence Smith*
- Clayton Curtis*
- LaVell S. Shroy*
- LaVell C. Thayer*
- Rasmussen Equipment Co.*
- Marlene Mitchell Hayne*
- Marlene Mitchell Hayne*
- Devon E. Humphreys*
- Melba I. Humphreys*

LEGEND

- 1/2" REBAR ON BOUNDARY CORNERS
- 1/2" REBAR ON LOT CORNERS
- UTILITY EASEMENTS
- COMMERCIAL LOTS
- RESIDENTIAL LOTS

NOTES

1. BASIS OF BEARING FOR THIS PLAN IS THE NORTH-SOUTH CENTERLINE OF SECTION 20 WHICH IS DUE SOUTH.

CURVE	Δ	RADIUS	LENGTH	CHORD	TANGENT
C-89	15°54'09"	570.60'	158.37'	157.86'	79.70'
C-90	15°54'09"	595.60'	165.31'	164.78'	83.19'
C-91	9°30'30"	620.60'	102.99'	102.87'	51.61'
C-92	11°33'43"	925.00'	65.58'	65.47'	32.80'
C-93	30°00'00"	275.00'	142.36'	142.36'	71.18'
C-94	30°00'00"	300.00'	157.08'	155.29'	80.38'
C-95	18°26'17"	325.00'	104.69'	104.14'	52.75'
C-96	7°20'14"	729.15'	93.37'	93.31'	46.75'
C-97	47°59'41"	20.00'	17.45'	16.90'	8.45'

STATE OF UTAH, COUNTY OF CACHE
ON THE 5TH DAY OF AUG. 1982, PERSONALLY APPEARED
BEFORE ME *W.P. Petersen*, WHO BEING BY ME DULY SWORN
(OR AFFIRMED), DID SAY THAT HE IS PRESIDENT, RASMUSSEN
OF RASMUSSEN EQUIP. CO.; MARY B. PETERSEN THAT SHE IS PRESIDENT OF PETERSEN
LAND & LIVESTOCK CO., AND THAT SAID INSTRUMENT WAS
SIGNED IN BEHALF OF SAID CORPORATION BY AUTHORITY
OF ITS BYLAWS (OR RESOLUTION OF ITS BOARD OF DIRECTORS
AS THE CASE MAY BE) AND SAID PETERSEN LAND & LIVESTOCK
CO. AND RASMUSSEN EQUIPMENT CO. ACKNOWLEDGED TO
ME THAT SAID CORPORATION EXECUTED THE SAME.
MY COMMISSION EXPIRES APRIL 8, 1984.

W.P. Petersen
NOTARY PUBLIC



FOOTHILL ESTATES

A SUBDIVISION OF PART OF SECTION 20, T.14N., R.5E., S. L. B. & M.
GARDEN CITY RICH COUNTY UTAH

MAYOR'S APPROVAL
APPROVED BY *John Peterson* THIS 11TH DAY OF DEC., 1980

ATTEST: *Carmen Madson*

CITY ENGINEER'S APPROVAL
APPROVED THIS 25TH DAY OF JULY, 1980,
BY THE GARDEN CITY ENGINEER
P.J. Associates Inc.
CITY ENGINEER

PLANNING COMMISSION APPROVAL
APPROVED THIS 25TH DAY OF JULY, 1980,
BY THE GARDEN CITY PLANNING COMMISSION.
John Peterson
CHAIRMAN

CITY ATTORNEY
APPROVED AS TO FORM THIS 10TH DAY OF AUGUST,
1980.
Norman Olson
GARDEN CITY ATTORNEY

ACKNOWLEDGEMENT
STATE OF UTAH COUNTY OF
ON THIS 5TH DAY OF AUG., 1982, PERSONALLY APPEARED BEFORE ME THE SIGNERS OF THE ABOVE OWNERS DEDICATION, WHO DULY ACKNOWLEDGED TO ME THAT THEY EXECUTED THE SAME.
W.P. Petersen
NOTARY PUBLIC

COUNTY RECORDER'S CERTIFICATE
STATE OF UTAH COUNTY OF RICH
THIS IS TO CERTIFY THAT THIS PLAN WAS FILED FOR RECORD IN THE COUNTY RECORDER'S OFFICE ON THIS 03RD DAY OF AUGUST, 1981, AT 3:18 P.M. AND IS DULY RECORDED IN BOOK 249 PAGE 189
FILING NO. 30159
Debbie S. Luvorch
DEPUTY COUNTY RECORDER