

ITEM	LOT #	BLK #	DESCRIPTION	ITEM	LOT #	BLK #	DESCRIPTION	ITEM	LOT #	BLK #	DESCRIPTION	ITEM	LOT #	BLK #	DESCRIPTION
El-L Co Terrace			BOUNDARY DESCRIPTION Beg. at a Point S. 89°41'04" E. 1,248.29 ft. from the West 1/4 cor. of Section 8, T14N, R5E, SLB&M; th. N. 0°24'10" E. 1,213.402 ft., th. N. 89°35'50" W. 363. ft., th. S. 0°24'10" W. 1,194.580 ft., th. S. 6°21'26" W. 1,554.693 ft., th. S. 83°38'34" E. 363. ft., th. N. 6°21'26" E. 1,573.632 ft. to Pt. of Beg., cont. 23.068 acres.												
"	1	1	Beg. at a pt. S. 89°41'04" E. 1248.29 ft. and S. 6°21'26" W. 1,453.632 ft. from the W. 1/4 cor. of Sect. 8, T14N, R5E, SLB&M; th. N. 83°38'34" W. 363. ft., th. S. 6°21'26" W. 120. ft., th. S. 83°38'34" E. 363. ft., th. N. 6°21'26" E. 120. ft. to Pt. of Beg., cont. 1.0 acres.	"	10	1	Beg. at a pt. S. 89°41'04" E. 1248.29 ft. and S. 6°21'26" W. 373.632 ft. from the W. 1/4 cor. of Sect. 8, T14N, R5E, SLB&M; th. N. 83°38'34" W. 363. ft., th. S. 6°21'26" W. 120. ft., th. S. 83°38'34" E. 363. ft., th. N. 6°21'26" E. 120. ft. to Pt. of Beg., cont. 1.0 acres.	"	9	2	Beg. at a Pt. S. 89°41'04" E. 1248.29 ft. and N. 0°24'10" E. 733.402 ft. from the W. 1/4 cor. of Sect. 8, T14N, R5E, SLB&M; th. N. 89°35'50" W. 363. ft., th. S. 0°24'10" W. 120. ft., th. S. 89°35'50" E. 363. ft. to Pt. of Beg., cont. 1.0 acres.	Utility Easement #4			The following easement shall include 12.00 feet on the Westerly side of the line described as follows:  BEGINNING at a point which is 1530.64 feet South and 713.254 feet East of the West 1/4 corner of Section 8, T14N, R5E, SLB&M, said point, also being Southwest corner of the El-L-Co Terrace Subdivision property, and running thence along the West line of said El-L-Co property N. 6°21'26" E. 1554.65 feet, more or less, to a point which is 14.50 feet North and 885.41 feet East of said West 1/4 corner of Section 8.
"	2	1	Beg. at a pt. S. 89°41'04" E. 1248.29 ft. and S. 6°21'26" W. 1,333.632 ft. from the W. 1/4 cor. of Sect. 8, T14N, R5E, SLB&M; th. N. 83°38'34" W. 363. ft., th. S. 6°21'26" W. 120. ft., th. S. 83°38'34" E. 363. ft., th. N. 6°21'26" E. 120. ft. to Pt. of Beg., cont. 1.0 acres.	"	1	2	Beg. at a pt. S. 89°41'04" E. 1248.29 ft. and S. 6°21'26" W. 133.632 ft. from the W. 1/4 cor. of Sect. 8, T14N, R5E, SLB&M; th. N. 83°38'34" W. 363. ft., th. S. 6°21'26" W. 120. ft., th. S. 83°38'34" E. 363. ft., th. N. 6°21'26" E. 120. ft. to Pt. of Beg., cont. 1.0 acres.	"	11	2	Beg. at a Pt. S. 89°41'04" E. 1248.29 ft. and N. 0°24'10" E. 973.402 ft. from the W. 1/4 cor. of Sect. 8, T14N, R5E, SLB&M; th. N. 89°35'50" W. 363. ft., th. S. 0°24'10" W. 120. ft., th. S. 89°35'50" E. 363. ft. to Pt. of Beg., cont. 1.0 acres.				
"	3	1	Beg. at a pt. S. 89°41'04" E. 1248.29 ft. and S. 6°21'26" W. 1,213.632 ft. from the W. 1/4 cor. of Sect. 8, T14N, R5E, SLB&M; th. N. 83°38'34" W. 363. ft., th. S. 6°21'26" W. 120. ft., th. S. 83°38'34" E. 363. ft., th. N. 6°21'26" E. 120. ft. to Pt. of Beg., cont. 1.0 acres.	"	2	2	Beg. at a Pt. S. 89°41'04" E. 1248.29 ft. from the W. 1/4 cor. of Sect. 8, T14N, R5E, SLB&M; th. N. 86°37'46" W. 363.4876 ft., th. S. 6°21'26" W. 114.693 ft., th. S. 83°38'34" E. 363. ft., th. N. 6°21'26" E. 133.632 ft. to Pt. of Beg., cont. 1.035 acres.	"	12	2	Beg. at a Pt. S. 89°41'04" E. 1248.29 ft. and N. 0°24'10" E. 1093.402 ft. from the W. 1/4 cor. of Sect. 8, T14N, R5E, SLB&M; th. N. 89°35'50" W. 363. ft., th. S. 0°24'10" W. 120. ft., th. S. 89°35'50" E. 363. ft. to Pt. of Beg., cont. 1.0 acres.				
"	4	1	Beg. at a pt. S. 89°41'04" E. 1248.29 ft. and S. 6°21'26" W. 1,093.632 ft. from the W. 1/4 cor. of Sect. 8, T14N, R5E, SLB&M; th. N. 83°38'34" W. 363. ft., th. S. 6°21'26" W. 120. ft., th. S. 83°38'34" E. 363. ft., th. N. 6°21'26" E. 120. ft. to Pt. of Beg., cont. 1.0 acres.	"	3	2	Beg. at a Pt. S. 89°41'04" E. 1248.29 ft. from the W. 1/4 cor. of Sect. 8, T14N, R5E, SLB&M; th. N. 89°35'50" W. 363. ft., th. S. 0°24'10" W. 114.580 ft., th. S. 86°37'46" E. 363.4876 ft. to Pt. of Beg., cont. 1.033 acres.	Roadway Easement #1			The following easement shall include 25.00 feet on each side of the centerline being described as follows:  BEGINNING at a point on the center of an existing road which is 1573.60 feet South and 1098.87 feet East of the West 1/4 cor. of Section 8, T14N, R5E, SLB&M, said point also being S83°38'34"E. 25.00 feet from the Southeast corner of the El-L-Co Terrace Subdivision and running thence along the center of said existing road N. 6°21'26" E. 1453.63 feet to a point which is 128.91 feet South and 1259.83 feet East, more or less, from said West 1/4 corner of Section 8, T14N, R5E, SLB&M.				
"	5	1	Beg. at a pt. S. 89°41'04" E. 1248.29 ft. and S. 6°21'26" W. 973.632 ft. from the W. 1/4 cor. of Sect. 8, T14N, R5E, SLB&M; th. N. 83°38'34" W. 363. ft., th. S. 6°21'26" W. 120. ft., th. S. 83°38'34" E. 363. ft., th. N. 6°21'26" E. 120. ft. to Pt. of Beg., cont. 1.0 acres.	"	4	2	Beg. at a Pt. S. 89°41'04" E. 1248.29 ft. and N. 0°24'10" E. 133.402 ft. from the W. 1/4 cor. of Sect. 8, T14N, R5E, SLB&M; th. N. 89°35'50" W. 363. ft., th. S. 0°24'10" W. 120. ft., th. S. 89°35'50" E. 363. ft. to Pt. of Beg., cont. 1.0 acres.								
"	6	1	Beg. at a pt. S. 89°41'04" E. 1248.29 ft. and S. 6°21'26" W. 853.632 ft. from the W. 1/4 cor. of Sect. 8, T14N, R5E, SLB&M; th. N. 83°38'34" W. 363. ft., th. S. 6°21'26" W. 120. ft., th. S. 83°38'34" E. 363. ft., th. N. 6°21'26" E. 120. ft. to Pt. of Beg., cont. 1.0 acres.	"	5	2	Beg. at a Pt. S. 89°41'04" E. 1248.29 ft. and N. 0°24'10" E. 253.402 ft. from the W. 1/4 cor. of Sect. 8, T14N, R5E, SLB&M; th. N. 89°35'50" W. 363. ft., th. S. 0°24'10" W. 120. ft., th. S. 89°35'50" E. 363. ft. to Pt. of Beg., cont. 1.0 acres.	Roadway Easement #2			The following easement shall include 25.00 feet on each side of the centerline being described as follows:  BEGINNING at a point on the Southwesterly Right-of-Way line of an existing road which is 1955.43 feet North and 818.73 feet East of the West 1/4 corner of Section 8, T14N, R5E, SLB&M, which point is also the point of tangency to a 108.75 foot radius curve to the left (radius point bears S40°14'16"E.); thence Southerly along said curve 109.88 feet; thence S. 8°07'48"E., 146.20 feet to a point of tangency to a 443.28 foot radius curve to the right (radius point bears S. 81°52'12"W.); thence Southerly along said curve 284.25 feet to a point of tangency to a 116.10 foot radius curve to the left (radius point bears S. 61°23'22"E.); thence Southerly along said curve 168.95 feet to a point of tangency to a 191.42 foot radius curve to the right (radius point bears S. 35°14'12"W.); thence Southerly along said curve 331.54 feet to a point which is North 996.47 feet and East 813.42 feet from the West 1/4 corner of Section 8.				
"	7	1	Beg. at a pt. S. 89°41'04" E. 1248.29 ft. and S. 6°21'26" W. 733.632 ft. from the W. 1/4 cor. of Sect. 8, T14N, R5E, SLB&M; th. N. 83°38'34" W. 363. ft., th. S. 6°21'26" W. 120. ft., th. S. 83°38'34" E. 363. ft., th. N. 6°21'26" E. 120. ft. to Pt. of Beg., cont. 1.0 acres.	"	6	2	Beg. at a Pt. S. 89°41'04" E. 1248.29 ft. and N. 0°24'10" E. 373.402 ft. from the W. 1/4 cor. of Sect. 8, T14N, R5E, SLB&M; th. N. 89°35'50" W. 363. ft., th. S. 0°24'10" W. 120. ft., th. S. 89°35'50" E. 363. ft. to Pt. of Beg., cont. 1.0 acres.								
"	8	1	Beg. at a pt. S. 89°41'04" E. 1248.29 ft. and S. 6°21'26" W. 613.632 ft. from the W. 1/4 cor. of Sect. 8, T14N, R5E, SLB&M; th. N. 83°38'34" W. 363. ft., th. S. 6°21'26" W. 120. ft., th. S. 83°38'34" E. 363. ft., th. N. 6°21'26" E. 120. ft. to Pt. of Beg., cont. 1.0 acres.	"	7	2	Beg. at a Pt. S. 89°41'04" E. 1248.29 ft. and N. 0°24'10" E. 493.402 ft. from the W. 1/4 cor. of Sect. 8, T14N, R5E, SLB&M; th. N. 89°35'50" W. 363. ft., th. S. 0°24'10" W. 120. ft., th. S. 89°35'50" E. 363. ft. to Pt. of Beg., cont. 1.0 acres.	Roadway Easement #3			The following easement shall include 25.00 feet on each side of the centerline being described as follows unless noted otherwise:  BEGINNING at a point which is 996.47 feet North and 813.42 feet East of the West 1/4 corner of Section 8, T14N, R5E, SLB&M, and running thence S. 45°31'38"E., 25.00 feet to a point of tangency to 117.99 foot radius curve to the right (radius point bears S. 44°28'22"W.); thence Southerly along said curve 94.59 feet to a point which is 25.00 feet West of the West boundary of El-L-Co Terrace Subdivision property; thence S. 0°24'10" W. parallel to said boundary 876.68 feet; thence N. 89°35'50" W., 25.00 feet to the center of a 50 foot radius curve Cul-De-Sac which point is North 17.45 feet and East 835.43 feet from the West 1/4 corner of Section 8.				
"	9	1	Beg. at a pt. S. 89°41'04" E. 1248.29 ft. and S. 6°21'26" W. 493.632 ft. from the W. 1/4 cor. of Sect. 8, T14N, R5E, SLB&M; th. N. 83°38'34" W. 363. ft., th. S. 6°21'26" W. 120. ft., th. S. 83°38'34" E. 363. ft., th. N. 6°21'26" E. 120. ft. to Pt. of Beg., cont. 1.0 acres.	"	8	2	Beg. at a Pt. S. 89°41'04" E. 1248.29 ft. and N. 0°24'10" E. 613.402 ft. from the W. 1/4 cor. of Sect. 8, T14N, R5E, SLB&M; th. N. 89°35'50" W. 363. ft., th. S. 0°24'10" W. 120. ft., th. S. 89°35'50" E. 363. ft. to Pt. of Beg., cont. 1.0 acres.								

UTILITY EASEMENT #4

ROADWAY EASEMENT #1

ROADWAY EASEMENT #2

ROADWAY EASEMENT #3

RECORDED

STATE OF UTAH, COUNTY OF RICH, RECORDED AND FILE AT THE REQUEST OF *Alton Cook*

DATE *7/3/90* TIME *4:00 P.M.* BOOK *N 3* PAGE *498*

*Billings M. F. 22,802*

FEE *\$ 31.50*

*J. B. Sussler* RICH COUNTY RECORDER

SURVEYOR'S CERTIFICATE

I, *R. J. Sorenson*

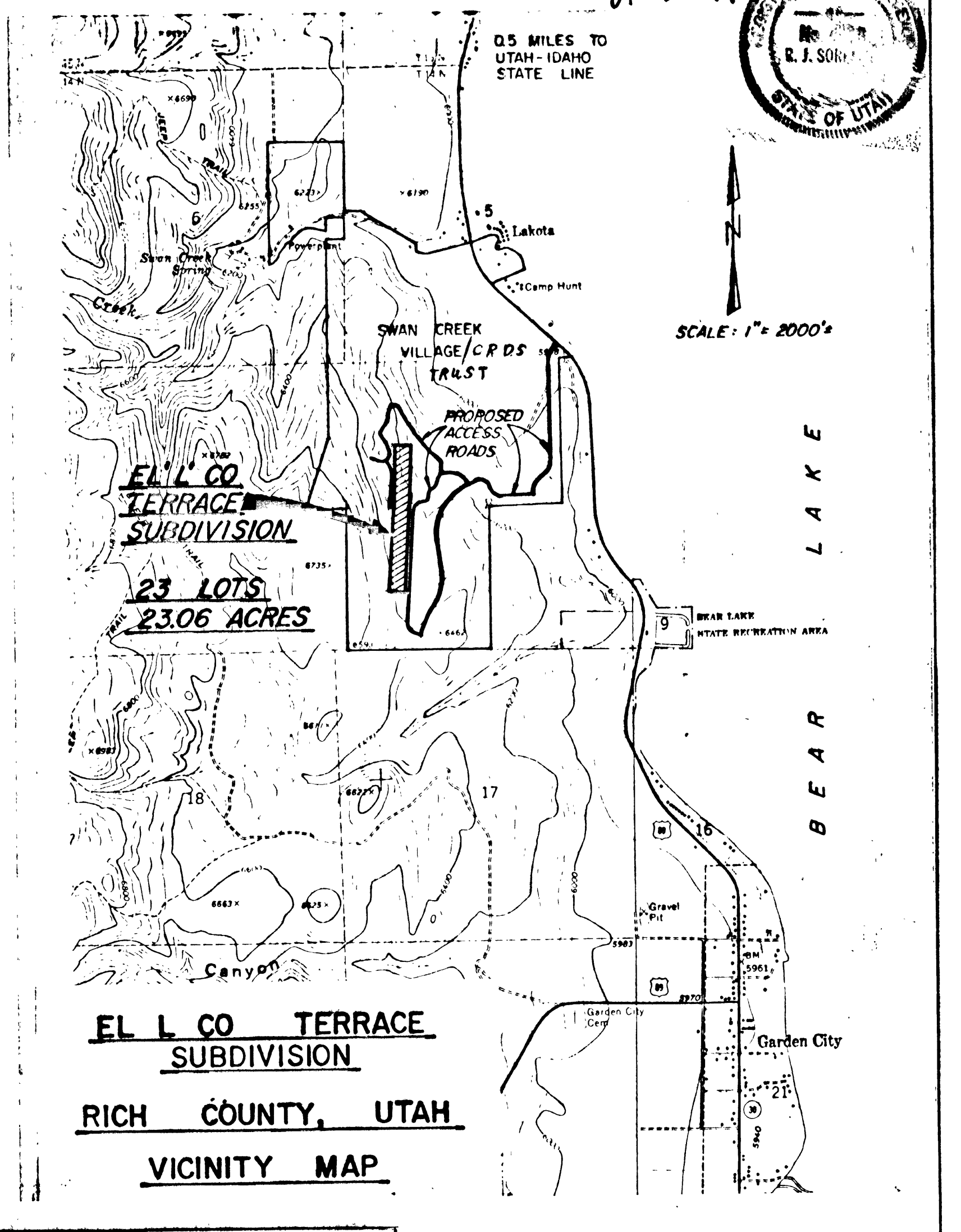
DO HEREBY CERTIFY THAT I AM A REGISTERED LAND SURVEYOR, AND THAT I HOLD CERTIFICATE NO. *4183*.

AS PRESCRIBED UNDER THE LAWS OF THE STATE OF UTAH, I FURTHER CERTIFY THAT BY AUTHORITY OF THE OWNERS, IN ACCORDANCE WITH ACCEPTABLE PROFESSIONAL STANDARDS, USING AVAILABLE INFORMATION THAT CAUSED TO BE MADE, UNDER MY DIRECTION, A SURVEY OF THE TRACT OF LAND SHOWN ON THIS PLAT AND DESCRIBED HEREIN, HEREAFTER TO BE KNOWN AS *El-L Co Terrace*, AND THAT SAME, TO THE BEST OF MY KNOWLEDGE HAS BEEN CORRECTLY SURVEYED AND STAKED ON THE GROUND AS SHOWN ON THIS PLAT.

*R. J. Sorenson* July 30 1979

*4183*

STATE OF UTAH



PLANNING COMMISSION

APPROVED THIS *5* DAY OF *Sept* A.D., 19*79* BY THE

RICH COUNTY PLANNING COMMISSION

*Earl Bell*

CHAIRMAN, RICH COUNTY PLANNING COMM.

BOARD OF HEALTH

APPROVED THIS *31* DAY OF *August* A.D., 19*79*

*Edward K. Hill*

CHAIRMAN, BOARD OF HEALTH

SURVEYOR'S CERTIFICATE

I HEREBY CERTIFY THAT THIS OFFICE HAS EXAMINED THIS PLAT AND IT IS CORRECT IN ACCORDANCE WITH INFORMATION ON FILE IN THIS OFFICE.

DATE *Oct 1, 1979* *Howard A. Reese* RICH COUNTY SURVEYOR

APPROVAL AS TO FORM

APPROVED AS TO FORM THIS *2nd* DAY OF *October* A.D. 19*79*

*James Perkins*

COUNTY ATTORNEY

COUNTY COMMISSION

PRESENTED TO THE BOARD OF COMMISSIONERS OF RICH COUNTY THIS *3* DAY OF *October* A.D. 19*79*

AT WHICH TIME THIS SUBDIVISION WAS APPROVED AND ACCEPTED.

*J. B. Sussler* COUNTY CLERK

OWNER/SUBDIVIDER

Alton Dudley Cook & G. Leslie Darrington Trustees

5 North 700 East Brigham City, Utah 84302

SUBDIVISION

EL L CO TERRACE

PAGE *1* OF *2*

DRAWN: *20 APR. 1979* SCALE: *AS NOTED*