

EDGE OF EDEN

A MINOR SUBDIVISION CONTAINING 13.39 ACRES LOCATED ON THE EAST SHORE OF BEAR LAKE IN THE SE 1/4 OF SECTION 32, T14N, R6E, S1281M, RICH COUNTY, UTAH

SURVEYOR'S CERTIFICATE

I, TERRY W. ABPLANALP, RESIDING IN LOGAN, CACHE COUNTY, UTAH, DO HEREBY CERTIFY THAT I AM A LICENSED LAND SURVEYOR AS PRESCRIBED BY THE LAWS OF THE STATE OF UTAH AND THAT I HOLD CERTIFICATE NO. 5030. I FURTHER CERTIFY THAT I HAVE MADE A SURVEY OF THE PROPERTY SHOWN ON THIS PLAT AND BY AUTHORITY OF THE OWNERS HAVE DIVIDED SAID PROPERTY INTO LOTS WITH DIMENSIONS AND BEARINGS AS SHOWN AND DESCRIBED.

COUNTY ENGINEER'S APPROVAL
APPROVED THIS 6 DAY OF Oct., 1991, BY THE RICH COUNTY ENGINEER.

Don J. P.E.
RICH COUNTY ENGINEER

COUNTY PLANNING AND ZONING COMMISSION
APPROVED THIS 6 DAY OF Oct., 1991, BY THE RICH COUNTY PLANNING & ZONING COMMISSION

Christa Jamieson
CHAIRMAN - COUNTY PLANNING AND ZONING COMMISSION

COUNTY COMMISSION APPROVAL
APPROVED THIS 7 DAY OF Oct., 1991, BY THE RICH COUNTY COMMISSION.

David Stuart
CHAIRMAN - RICH COUNTY COMMISSION

DISTRICT HEALTH DEPARTMENT
APPROVED THIS 24 DAY OF September, 1991, BY DISTRICT HEALTH DEPARTMENT.

Jul B. Layne
DISTRICT SANITARIAN

COUNTY ATTORNEY'S APPROVAL
APPROVED THIS 6th DAY OF October, 1991, BY THE RICH COUNTY ATTORNEY.

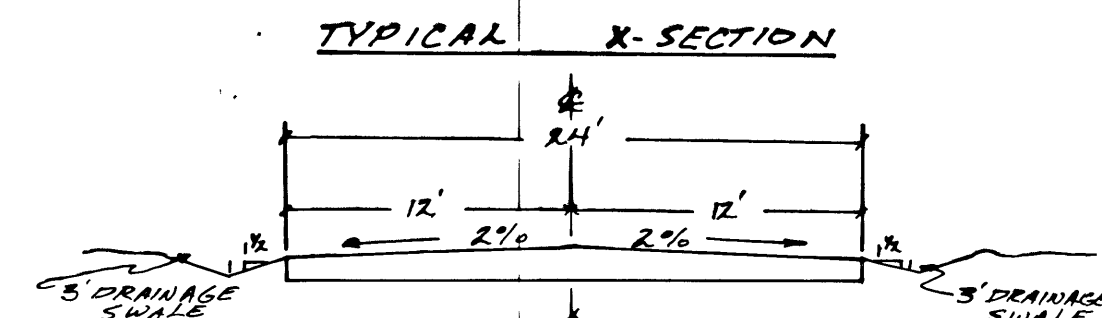
Richard O. Lamborn
RICH COUNTY ATTORNEY

LOT 7 BEGINNING AT A POINT NO°00'12"W 650.00 FT. FROM THE SOUTHEAST CORNER OF SECTION 32, T14N, R6E OF THE S1281M AND RUNNING THENCE NO°00'12"W 100.00 FT.; THENCE S89°59'48"W 578.69 FT. TO THE EAST SHORE OF BEAR LAKE; THENCE S9°24'58"E 45.42 FT.; THENCE CONTINUING ALONG EAST SHORE S5°26'32"E 55.44 FT.; THENCE N89°59'48"E 566.00 FT. TO THE POINT OF BEGINNING. CONTAINS 1.312 ACRES AND IS SUBJECT TO A UPFL EASEMENT AND A 24 FT. ROADWAY EASEMENT.

LOT 8 BEGINNING AT A POINT NO°00'12"W 750.00 FT. FROM THE SOUTHEAST CORNER OF SECTION 32, T14N, R6E OF THE S1281M AND RUNNING THENCE NO°00'12"W 100.00 FT.; THENCE S89°59'48"W 595.26 FT. TO THE EAST SHORE OF BEAR LAKE; THENCE S9°24'58"E 45.42 FT.; THENCE CONTINUING ALONG EAST SHORE S5°26'32"E 55.44 FT.; THENCE N89°59'48"E 578.69 FT. TO THE POINT OF BEGINNING. CONTAINS 1.347 ACRES AND IS SUBJECT TO A UPFL EASEMENT AND A 24 FT. ROADWAY EASEMENT.

LOT 9 BEGINNING AT A POINT NO°00'12"W 850.00 FT. FROM THE SOUTHEAST CORNER OF SECTION 32, T14N, R6E OF THE S1281M AND RUNNING THENCE NO°00'12"W 100.00 FT.; THENCE S89°59'48"W 611.84 FT. TO THE EAST SHORE OF BEAR LAKE; THENCE S9°24'58"E 45.42 FT.; THENCE CONTINUING ALONG EAST SHORE S5°26'32"E 55.44 FT.; THENCE N89°59'48"E 595.26 FT. TO THE POINT OF BEGINNING. CONTAINS 1.386 ACRES AND IS SUBJECT TO A UPFL EASEMENT AND A 24 FT. ROADWAY EASEMENT.

LOT 10 BEGINNING AT A POINT NO°00'12"W 950.00 FT. FROM THE SOUTHEAST CORNER OF SECTION 32, T14N, R6E OF THE S1281M AND RUNNING THENCE N6°30'20"W 100.65 FT. TO THE NORTH LINE OF SUBDIVISION; THENCE S89°59'48"W 621.34 FT. TO THE EAST SHORE OF BEAR LAKE; THENCE S12°19'58"E 83.85 FT.; THENCE CONTINUING ALONG EAST SHORE S9°24'58"E 45.42 FT.; THENCE N89°59'48"E 611.84 FT. TO THE POINT OF BEGINNING. CONTAINS 1.415 ACRES AND IS SUBJECT TO A UPFL EASEMENT AND A 24 FT. ROADWAY EASEMENT.



SCALE: 1"=100'

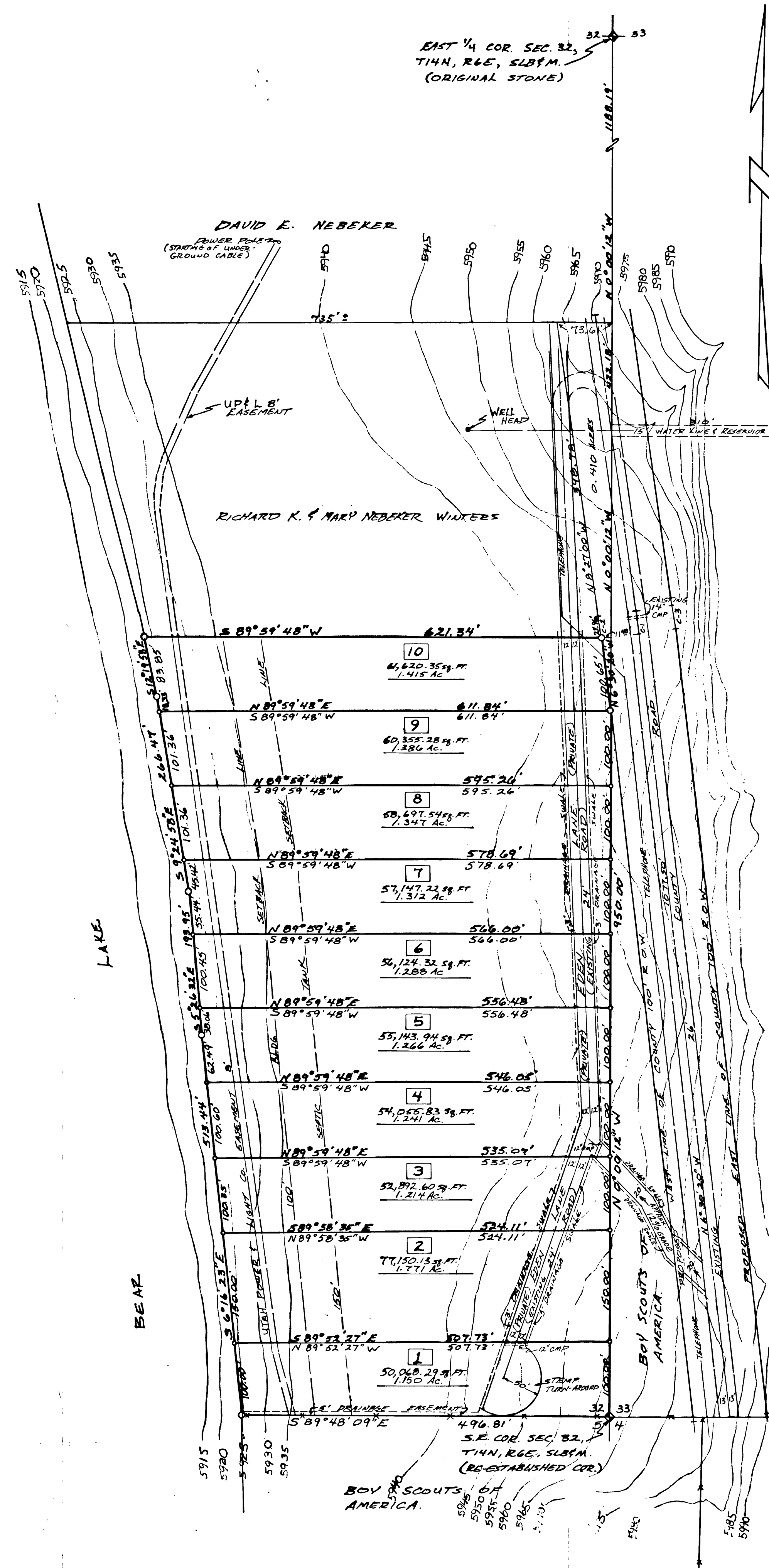
CURVE	RADIUS	DELTA	LENGTH	TANGENT	CHORD
C-1	873.89'	1°56'40"	29.66'	14.83'	29.66'
C-2	823.89'	1°56'40"	27.96'	13.98'	27.96'
C-3	923.89'	1°56'40"	31.35'	15.68'	31.35'

NOTES

- 1- THE BASIS OF BEARING FOR THIS SUBDIVISION IS THE EAST LINE OF SECTION 32, T14N, R6E, FROM THE SE CORNER OF SECTION TO THE WEST 1/4 CORNER OF SECTION 32. THE BEARING IS NO°00'12"W AND MEASURES 2660.31'
- 2- 0.018 ACRES FROM LOT 10 WILL BE DEEDED TO RICH COUNTY FOR PROPOSED 100' R.O.W. COUNTY ROAD.
- 3- THE WINTERS' AND THE BOY SCOUTS OF AMERICA HAVE AGREED TO ACCEPT THE EXISTING FENCE LINE BETWEEN THE TWO PROPERTIES AS THE LEGAL BOUNDARY LINE.
- 4- THE EAST SHORE OF BEAR LAKE IS FURTHER DESCRIBED AS THE HIGH WATER MARK WHEN THE LAKE ELEVATION IS AT THE 5923.65 FT. LEVEL.
- 5- ALL LOTS IN THIS SUBDIVISION WILL SHARE A COMMON INTEREST IN A 20 FT. ACCESS ROAD AS SHOWN ON THIS PLAT.

LEGEND

- 1/2" REBAR TO BE SET AT BOUNDARY CORNERS.
- 1/2" REBAR TO BE SET ON ALL LOT CORNERS.
- EXISTING FENCE LINE.
- ✦ SECTION CORNER MARKERS.



PRELIMINARY PLAT FOR:
EDGE OF EDEN MINOR SUBDIVISION
SCALE: 1"=100'
OWNERS: RICHARD K. & MARY NEBEKER WINTERS
SOUTH EDEN, UTAH 84101-944-8504
PART OF SE 1/4 SEC. 32, T14N, R6E, SOUTH EDEN, RICH COUNTY, UTAH

Recorded: Oct. 14, 1991 Filing No. 24,991
At 4:36 PM In Book 1339 Page 339
Date 15/99