

# COVE AT HARBOR VILLAGE BUILDINGS F-H & J-M

## BUILDING H

## BUILDING J

## BUILDING K

**BASEMENT FLOOR**  
**GARAGE & STORAGE**  
 FINISHED FLOOR ELEVATION: 5973.03'  
 CEILING ELEVATION: 5982.28'  
**CRAWL SPACE**  
 FINISHED FLOOR ELEVATION: 5980.73'  
 CEILING ELEVATION: 5982.23'

**MAIN FLOOR**  
 FINISHED FLOOR ELEVATION: 5983.23'  
 CEILING ELEVATION: 5991.23'

**SECOND FLOOR**  
 UNIT 1  
 FINISHED FLOOR ELEVATION: 5992.28'  
 CEILING ELEVATION: FROM 6000.28" TO 5998.78"

UNIT 4  
 FINISHED FLOOR ELEVATION: 5992.28'  
 CEILING ELEVATION: FROM 6000.28" TO 5998.61"

UNIT 5 & 6  
 FINISHED FLOOR ELEVATION: 5992.28'  
 CEILING ELEVATION: 6000.28"

**ATTIC FLOOR**  
 UNIT 5  
 FINISHED FLOOR ELEVATION: 6001.11'  
 CEILING ELEVATION: FROM 6010.44' TO 6007.11"

UNIT 6  
 FINISHED FLOOR ELEVATION: 6001.11'  
 CEILING ELEVATION: FROM 6009.11' TO 6006.61"

## BUILDING L

**BASEMENT FLOOR**  
**GARAGE & STORAGE**  
 FINISHED FLOOR ELEVATION: 5969.22'  
 CEILING ELEVATION: 5978.47'

**CRAWL SPACE**  
 FINISHED FLOOR ELEVATION: 5976.92'  
 CEILING ELEVATION: 5978.42'

**MAIN FLOOR**  
 FINISHED FLOOR ELEVATION: 5979.42'  
 CEILING ELEVATION: 5987.42'

**SECOND FLOOR**  
 UNIT 1  
 FINISHED FLOOR ELEVATION: 5988.47'  
 CEILING ELEVATION: FROM 5996.47' TO 5992.97"

UNIT 4  
 FINISHED FLOOR ELEVATION: 5988.47'  
 CEILING ELEVATION: FROM 5996.47' TO 5994.80"

UNIT 5 & 6  
 FINISHED FLOOR ELEVATION: 5988.47'  
 CEILING ELEVATION: 5996.47'

**ATTIC FLOOR**  
 UNIT 5  
 FINISHED FLOOR ELEVATION: 5997.30'  
 CEILING ELEVATION: FROM 6006.63' TO 6003.3'

UNIT 6  
 FINISHED FLOOR ELEVATION: 5997.30'  
 CEILING ELEVATION: FROM 6005.30' TO 6002.80"

## BUILDING F

**BASEMENT FLOOR**  
**GARAGE & STORAGE**  
 FINISHED FLOOR ELEVATION: 5967.39'  
 CEILING ELEVATION: 5976.64'

**CRAWL SPACE**  
 FINISHED FLOOR ELEVATION: 5975.09'  
 CEILING ELEVATION: 5976.59'

**MAIN FLOOR**  
 FINISHED FLOOR ELEVATION: 5977.59'  
 CEILING ELEVATION: 5985.59'

## SECOND FLOOR

UNIT 1  
 FINISHED FLOOR ELEVATION: 5986.64'  
 CEILING ELEVATION: FROM 5994.64' TO 5991.14"

UNIT 4  
 FINISHED FLOOR ELEVATION: 5986.64'  
 CEILING ELEVATION: FROM 5994.64' TO 5992.97"

UNIT 5 & 6  
 FINISHED FLOOR ELEVATION: 5986.64'  
 CEILING ELEVATION: 5994.64'

## ATTIC FLOOR

UNIT 5  
 FINISHED FLOOR ELEVATION: 5995.47'  
 CEILING ELEVATION: FROM 6001.47' TO 6000.27"

UNIT 6  
 FINISHED FLOOR ELEVATION: 5995.47'  
 CEILING ELEVATION: FROM 6003.47' TO 6000.97"

## BUILDING G

**BASEMENT FLOOR**  
**GARAGE & STORAGE**  
 FINISHED FLOOR ELEVATION: 5967.21'  
 CEILING ELEVATION: 5976.46'

**CRAWL SPACE**  
 FINISHED FLOOR ELEVATION: 5974.91'  
 CEILING ELEVATION: 5976.41'

**MAIN FLOOR**  
 FINISHED FLOOR ELEVATION: 5977.41'  
 CEILING ELEVATION: 5985.41'

## SECOND FLOOR

UNIT 1  
 FINISHED FLOOR ELEVATION: 5986.46'  
 CEILING ELEVATION: FROM 5994.46' TO 5990.96"

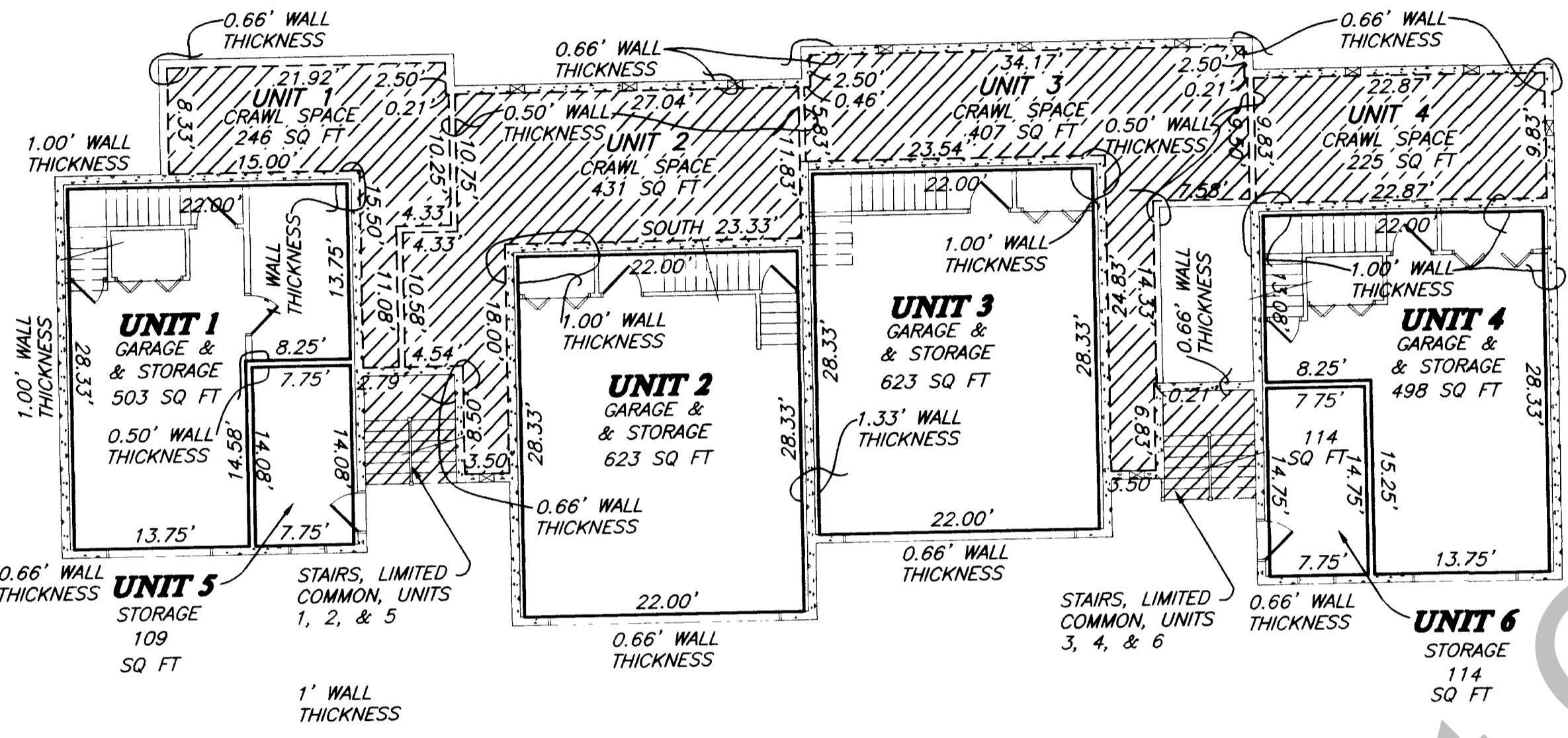
UNIT 4  
 FINISHED FLOOR ELEVATION: 5986.46'  
 CEILING ELEVATION: FROM 5994.46' TO 5992.79"

UNIT 5 & 6  
 FINISHED FLOOR ELEVATION: 5986.46'  
 CEILING ELEVATION: 5994.46'

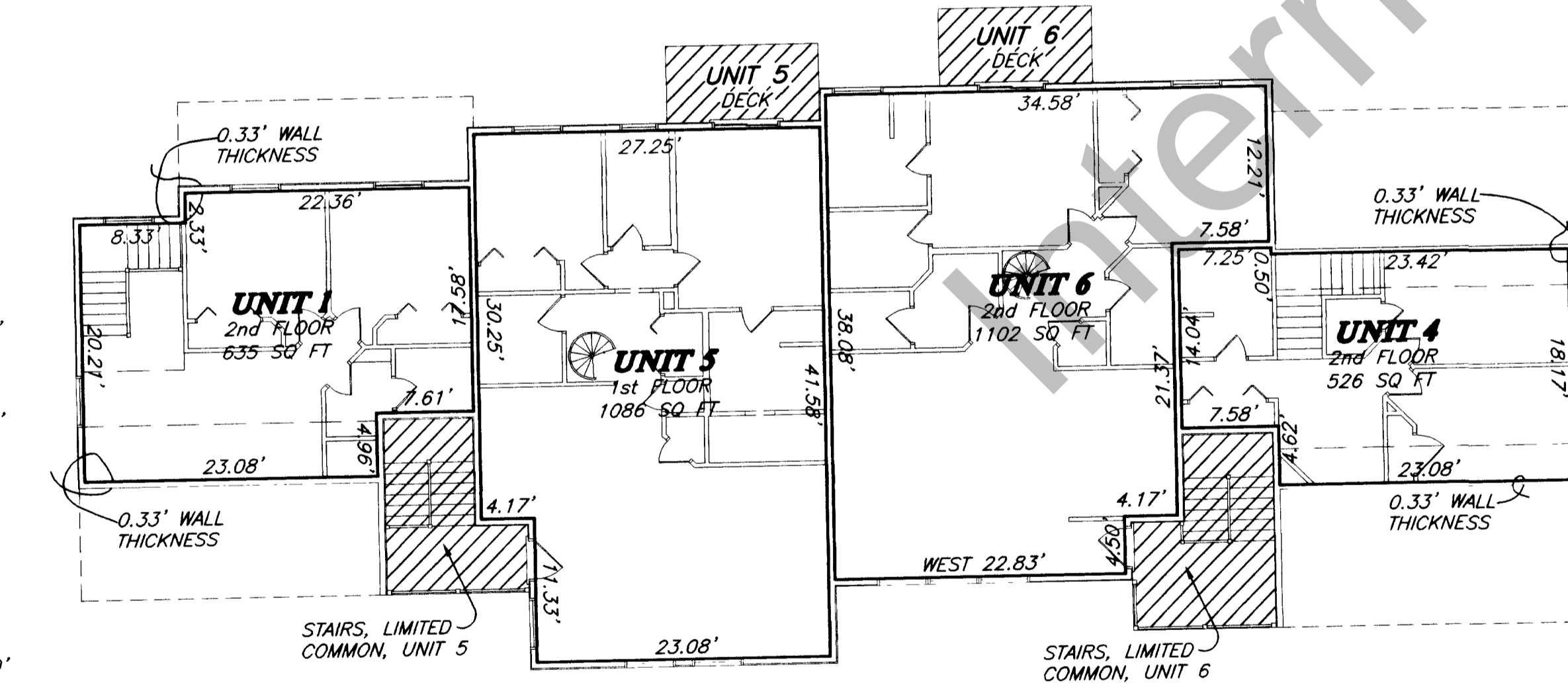
## ATTIC FLOOR

UNIT 5  
 FINISHED FLOOR ELEVATION: 5995.29'  
 CEILING ELEVATION: FROM 6004.62' TO 6001.29"

UNIT 6  
 FINISHED FLOOR ELEVATION: 5995.29'  
 CEILING ELEVATION: FROM 6003.29' TO 6003.29"

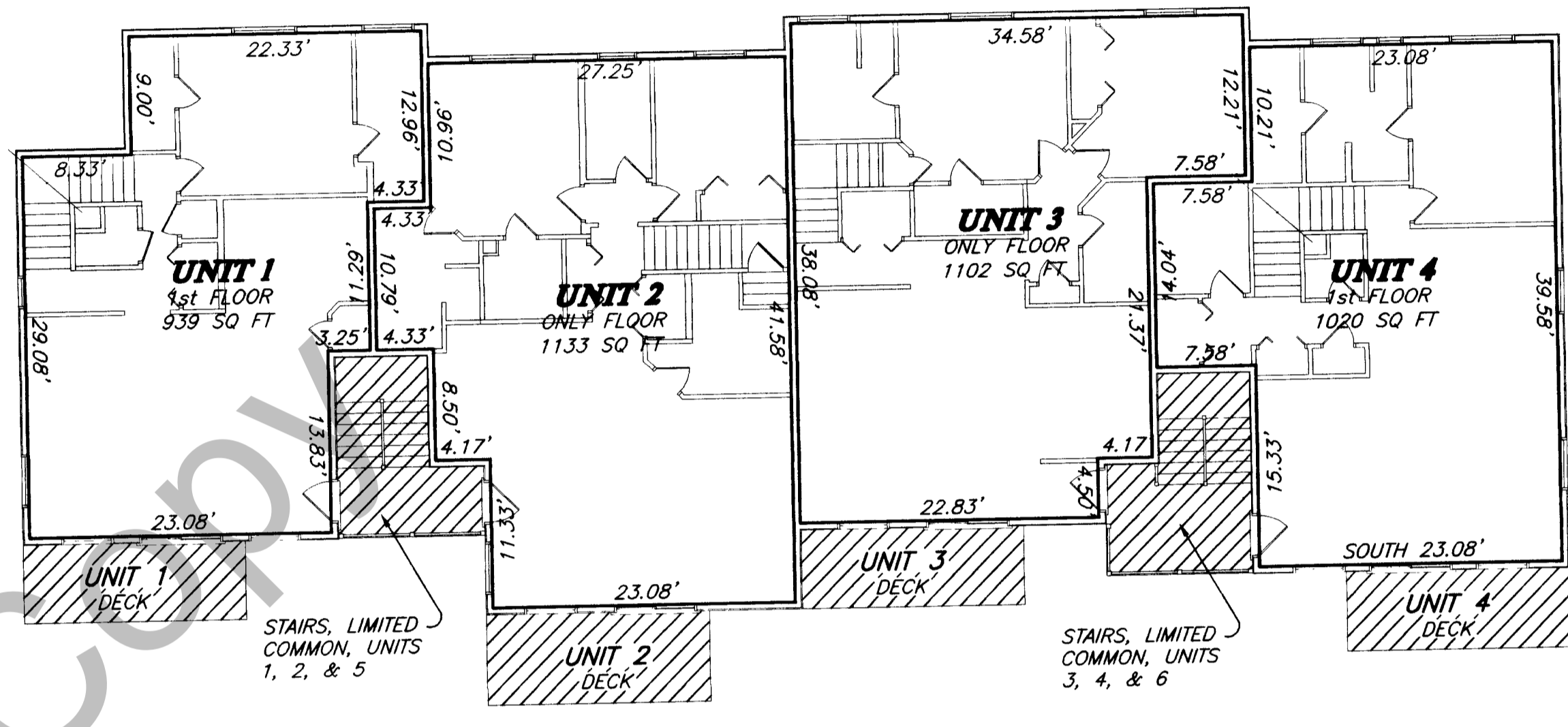


## BASEMENT FLOOR



## SECOND FLOOR

ALL WALLS ARE 0.50' THICK (UNLESS NOTED)



## MAIN FLOOR

ALL WALLS ARE 0.50' THICK

## ATTIC FLOOR

ALL WALLS ARE 0.33' THICK

## BUILDING M

**BASEMENT FLOOR**  
**GARAGE & STORAGE**  
 FINISHED FLOOR ELEVATION: 5972.99'  
 CEILING ELEVATION: 5982.24'

**CRAWL SPACE**  
 FINISHED FLOOR ELEVATION: 5980.69'  
 CEILING ELEVATION: 5982.19'

**MAIN FLOOR**  
 FINISHED FLOOR ELEVATION: 5983.19'  
 CEILING ELEVATION: 5991.19'

**SECOND FLOOR**  
 UNIT 1  
 FINISHED FLOOR ELEVATION: 5992.24'  
 CEILING ELEVATION: FROM 6000.24' TO 5996.74"

UNIT 4  
 FINISHED FLOOR ELEVATION: 5992.24'  
 CEILING ELEVATION: FROM 6000.24' TO 5998.57"

UNIT 5 & 6  
 FINISHED FLOOR ELEVATION: 5992.24'  
 CEILING ELEVATION: 6000.24'

**ATTIC FLOOR**  
 UNIT 5  
 FINISHED FLOOR ELEVATION: 6001.07'  
 CEILING ELEVATION: FROM 6010.40' TO 6007.07"

UNIT 6  
 FINISHED FLOOR ELEVATION: 6001.07'  
 CEILING ELEVATION: FROM 6009.07' TO 6006.57"

**RICH COUNTY RECORDER**  
 STATE OF UTAH )  
 COUNTY OF RICH )  
 THIS PLAT HAS BEEN DULY ACKNOWLEDGED, CERTIFIED AND APPROVED AND MAY BE LAWFULLY BE RECORDED IN RICH COUNTY, UTAH  
 FILING NO. \_\_\_\_\_  
 DATE \_\_\_\_\_  
 TIME \_\_\_\_\_  
 BOOK \_\_\_\_\_  
 PAGE \_\_\_\_\_  
 REQUEST OF \_\_\_\_\_ RICH COUNTY RECORDER

**REEVE & ASSOCIATES, INC.**  
 Civil Engineering • Structural Engineering  
 Surveying • Land Planning  
 EXECUTIVE BLDG., 4155 S. HARRISON BLVD., #310, OGDEN, UT 84403  
 (801) 621-3100 FAX (801) 621-2666

PROJECT NO: 4141-07 SURVEYOR: R. WILLIFORD  
 DATE: MARCH 28, 2002 DRAFTED: H. GUNN  
 SCALE: 1"=10' CHECKED: \_\_\_\_\_  
 REVISION: \_\_\_\_\_