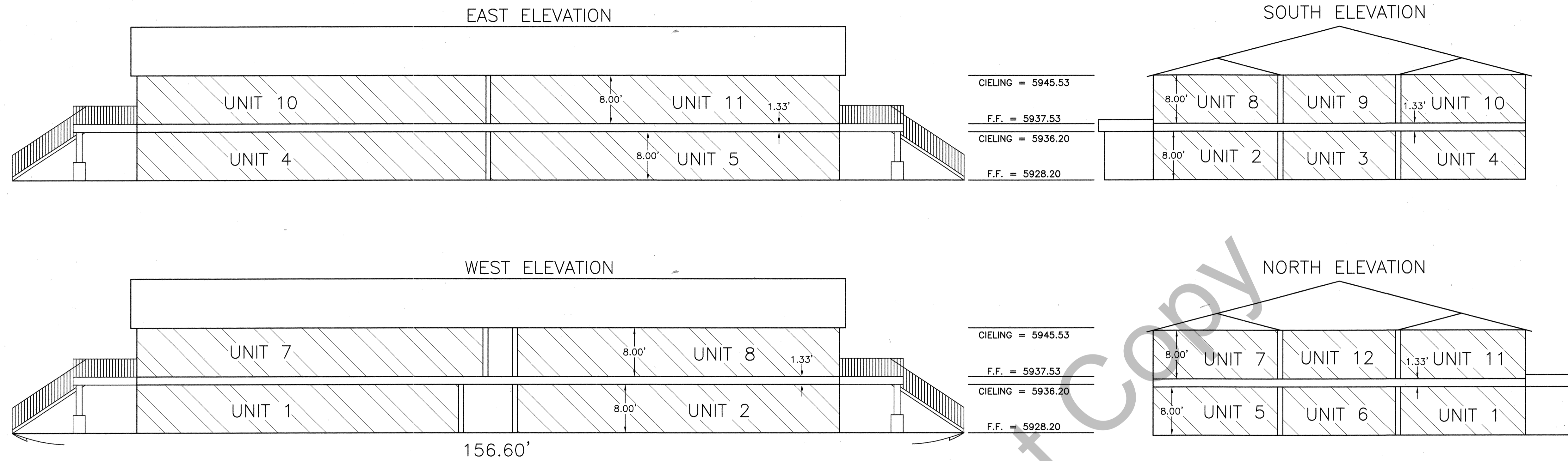
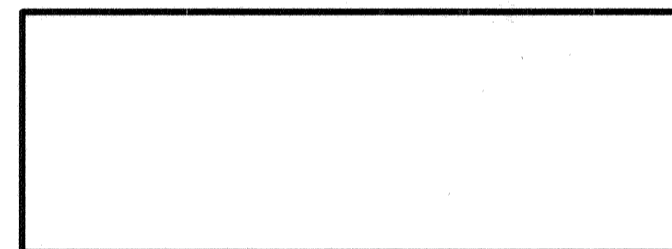


# BLUEWATER RESORT CONDOMINIUMS

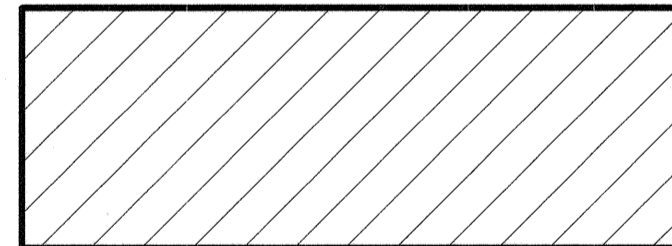
A PART OF THE SOUTHEAST QUARTER OF  
SECTION 33, TOWNSHIP 15 NORTH, RANGE 5 EAST S.L.B.&M.  
GARDEN CITY, RICH COUNTY, UTAH  
APRIL 2004



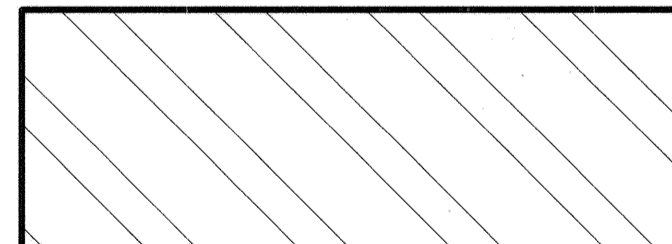
COMMON ELEMENTS



LIMITED COMMON ELEMENTS



PRIVATE UNIT



BENCH MARK IS  
DEPT. OF NATURAL RESOURCES  
BEAR LAKE CONTROL NETWORK  
GPS MONUMENT #BL13  
U.P.&L. DATUM 5946.42

SCALE = 1" = 10'