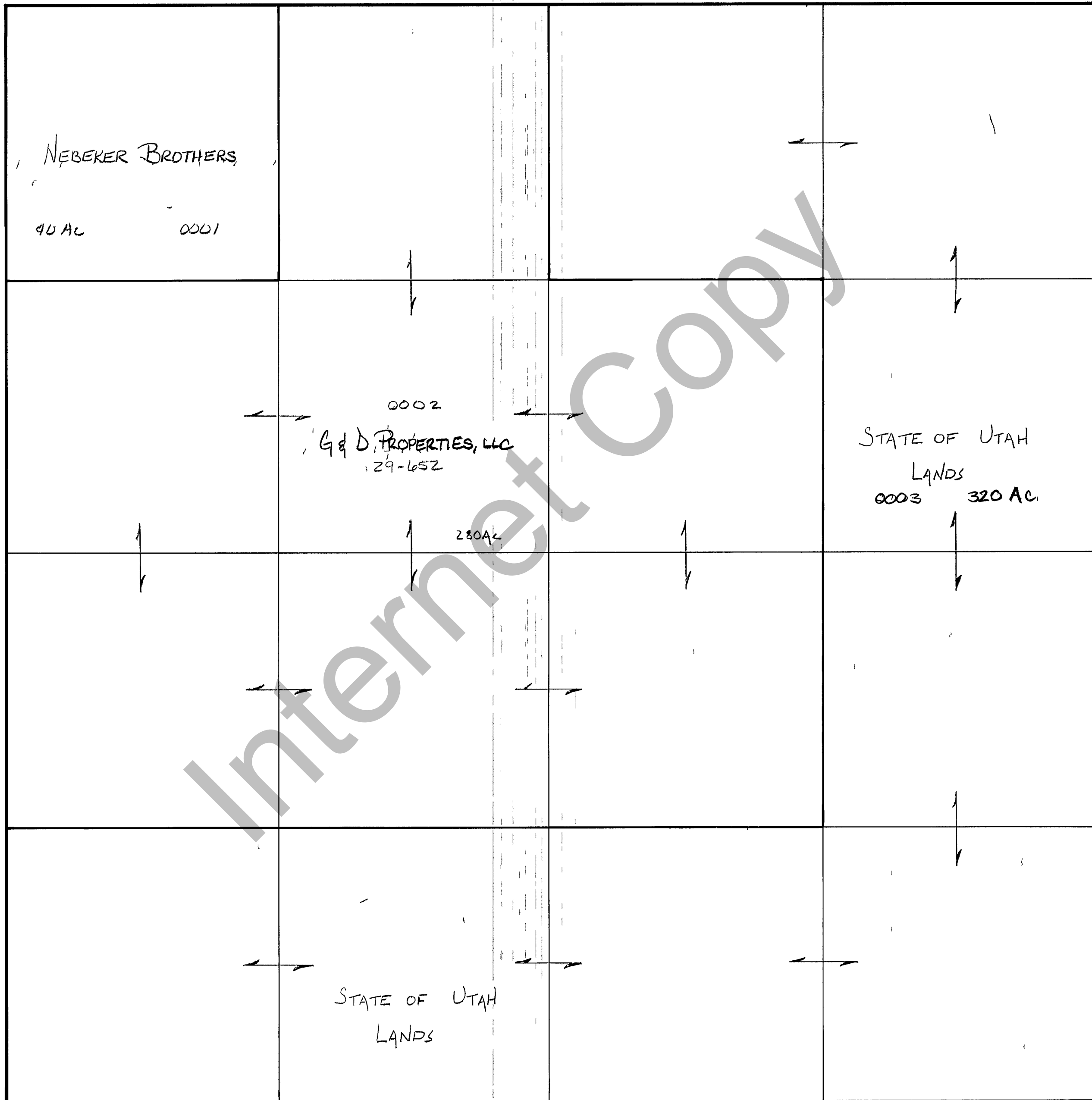


RICH COUNTY
 SECTION 17, T. 14 N R 8 E, S. 1 B & M

SERIAL NO = 44-17-000-PARCEL



Internet Copy

| REVISIONS | | |
|-----------|--|--|
| | | |
| | | |
| | | |
| | | |

THIS PLAT IS MADE SOLELY FOR THE PURPOSE OF ASSISTING IN LOCATING THE LAND AND THE RECORDER ASSUMES NO LIABILITY FOR VARIATIONS IF ANY WITH AN ACTUAL SURVEY

| | |
|---|-----------------------|
| Section <u>17</u> T <u>14</u> N R <u>8E</u> | book _____ page _____ |
| drawn by <u>DW</u> date <u>12-79</u> | scale 1" = 400' |

TMS