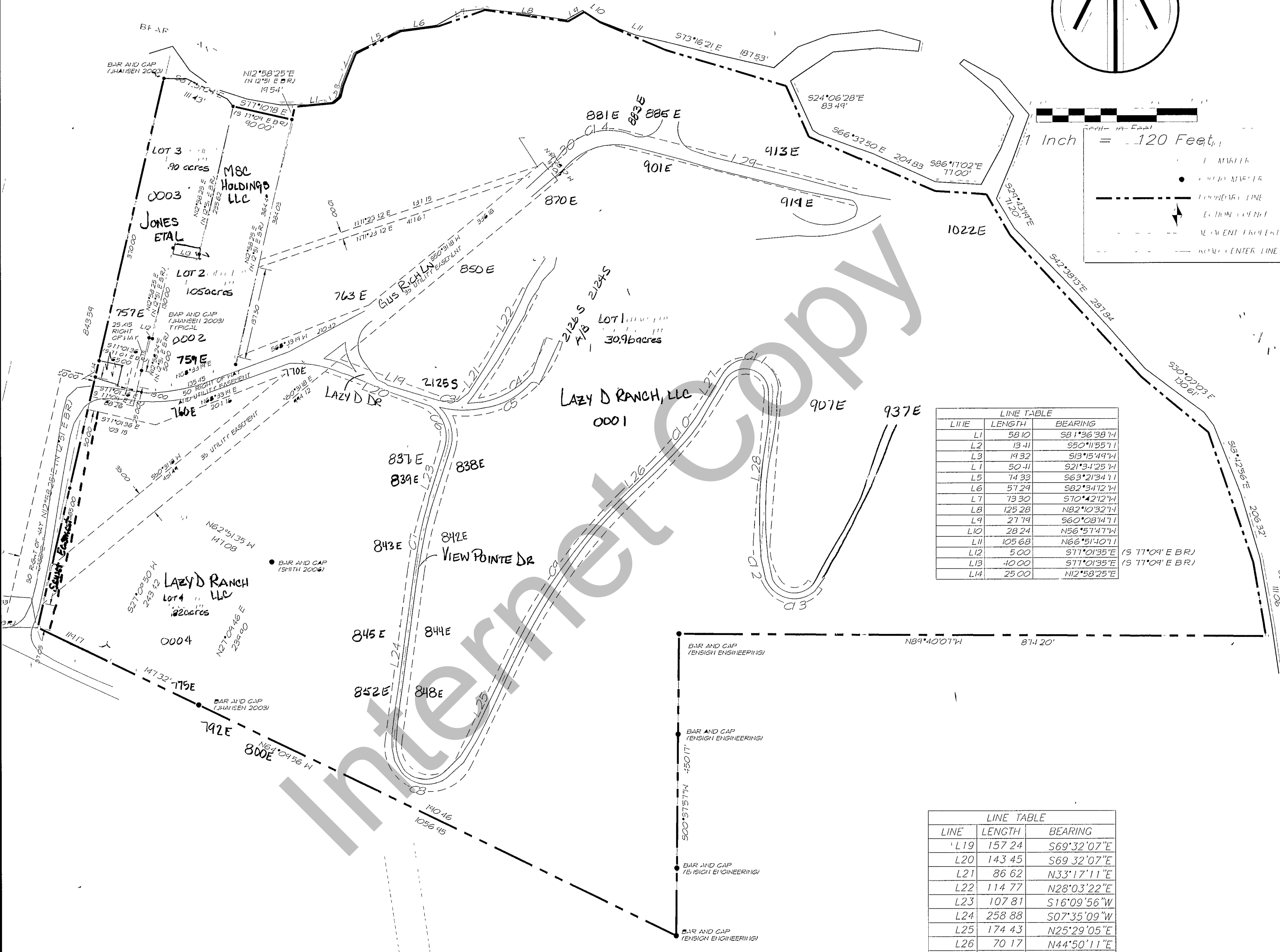
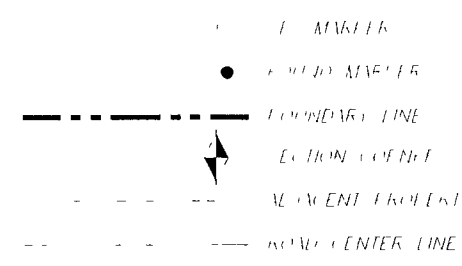


1 Inch = 120 Feet



LINE	LENGTH	BEARING
L1	58.10	S81°36'38"W
L2	13.41	S50°11'55"W
L3	19.32	S13°15'49"W
L4	50.41	S21°31'25"W
L5	14.33	S63°21'34"W
L6	51.29	S82°34'12"W
L7	13.30	S70°42'12"W
L8	125.28	N82°10'32"W
L9	27.79	S60°03'14"W
L10	28.24	N56°51'47"W
L11	105.68	N66°51'40"W
L12	5.00	S77°01'35"E (S 77°04'E BR.)
L13	40.00	S77°01'35"E (S 77°04'E BR.)
L14	25.00	N12°58'25"E

LINE	LENGTH	BEARING
L19	157.24	S69°32'07"E
L20	143.45	S69°32'07"E
L21	86.62	N33°17'11"E
L22	114.77	N28°03'22"E
L23	107.81	S16°09'56"W
L24	258.88	S07°35'09"W
L25	174.43	N25°29'05"E
L26	70.17	N44°50'11"E
L27	33.64	N31°10'15"E
L28	220.15	S04°18'23"W
L29	361.68	S75°49'30"E
L30	54.36	N50°31'18"E

CURVE	LENGTH	RADIUS	CHORD	BEARING
C1	117.99	100.84	111.38	S72°28'10"W
C2	129.26	186.00	126.68	N76°25'42"E
C3	46.73	134.84	46.50	S79°05'41"E
C4	184.36	139.25	171.19	N53°39'21"E
C5	230.58	140.63	205.61	N63°12'55"E
C6	89.77	59.94	81.61	N26°41'06"W
C7	82.36	548.81	82.28	S11°52'33"W
C8	155.66	54.99	108.66	S73°27'53"E
C9	288.05	869.52	286.73	S35°09'38"W
C10	131.87	577.13	131.58	N38°00'13"E
C11	108.12	39.97	78.04	N71°32'45"W
C12	69.74	99.99	68.34	S15°40'21"E
C13	71.56	37.12	60.98	N88°51'27"E
C14	68.36	73.00	65.89	S77°20'54"W

REVISIONS	LAZY D RANCH	S/2, S 34, & NW/4 S 3 T 14 N, & T 13 N, R 5 E, SLB & M	SCALE 1"=120'
-----------	--------------	--	------------------

41-34-010-PARCEL