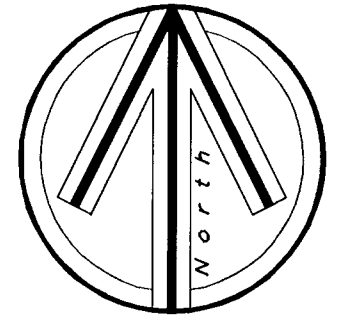
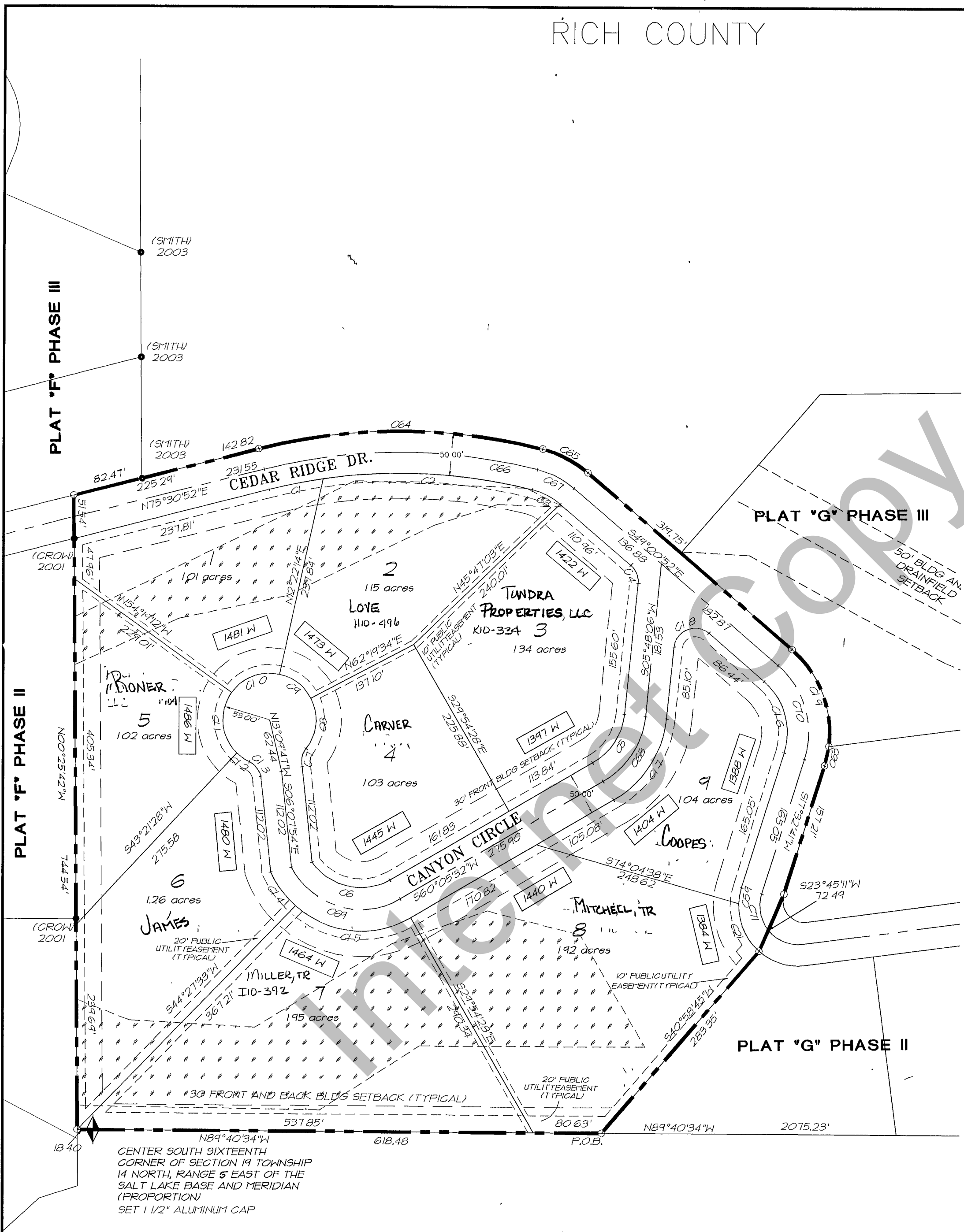


RICH COUNTY

PLAT NO. _____
 BOOK _____ PAGE _____



100 0 50 100
 Scale in Feet
 1 Inch = 100 Feet



CURVE	LENGTH	RADIUS	CURVE TABLE PHASE 1			BEARING
			TANGENT	CHORD	DELTA	
C1	64.87	625.00	32.47	64.85	5°56'50"	S78°29'17"W
C2	248.57	625.00	125.95	246.93	22°47'13"	N87°08'42"W
C3	37.33	80.00	19.01	36.99	26°44'14"	N62°22'58"W
C4	23.92	25.00	12.96	23.02	54°48'58"	N21°36'33"W
C5	71.07	75.00	38.45	68.44	54°12'25"	N32°56'49"E
C6	103.00	71.22	62.86	94.25	82°51'43"	S72°15'45"E
C7	22.39	25.00	12.01	21.65	51°18'28"	S12°29'02"W
C8	63.18	55.00	35.59	59.76	65°49'08"	N05°14'07"E
C9	47.95	55.00	25.62	46.45	49°52'20"	N52°39'06"W
C10	64.02	55.00	36.19	60.47	68°41'26"	S69°01'31"W
C11	78.05	55.00	47.23	71.66	81°18'12"	S04°58'18"E
C12	18.11	55.00	9.14	18.03	18°52'02"	S55°03'26"E
C13	22.40	25.00	12.01	21.65	51°19'40"	N38°49'37"W
C14	49.54	117.85	25.14	49.18	24°07'49"	S36°48'11"E
C15	145.68	117.85	83.83	136.55	70°56'45"	S84°20'34"E
C16	92.93	80.00	52.51	87.80	66°33'31"	N15°44'05"W
C17	118.44	125.00	64.09	114.06	54°12'25"	N32°56'49"E
C18	54.62	25.00	48.21	44.39	125°11'02"	S68°23'12"W
C19	127.72	130.00	69.55	122.65	56°12'29"	S20°52'02"E
C21	62.23	70.00	33.34	60.20	50°56'16"	S23°33'06"E
C59	19.09	70.00	9.61	19.03	15°37'40"	S09°43'52"W
C63	23.30	130.00	11.68	23.27	10°16'04"	S12°24'40"W
C64	338.52	675.00	172.90	334.98	28°44'03"	N89°52'53"E
C65	60.66	130.00	30.89	60.12	26°44'14"	S62°22'58"E
C66	325.98	650.00	166.49	322.57	28°44'03"	S89°52'53"E
C67	49.00	105.00	24.95	48.55	25°44'14"	N62°22'58"W
C68	94.75	100.00	51.27	91.25	54°12'25"	N32°56'49"E
C69	149.07	93.32	95.84	133.72	91°31'35"	S73°50'44"E
C70	121.98	105.00	68.92	115.23	66°33'33"	N15°44'05"W
C71	52.28	45.00	29.54	49.39	66°33'56"	S15°44'17"E

N89°40'34"W
 CENTER SOUTH SIXTEENTH
 CORNER OF SECTION 19 TOWNSHIP
 14 NORTH, RANGE 5 EAST OF THE
 SALT LAKE BASE AND MERIDIAN
 (PROPORTION)
 SET 1 1/2" ALUMINUM CAP

S00°28'27"E
 2634.95'
 1317.46'
 N00°21'

41-19-070-Lots

REVISIONS	BRIDGERLAND VILLAGE PLAT "G", PH. 1	SECTION 19 T. 14 N., R. 5 E. S.L.B.& M.	SCALE 1"=100'
-----------	--	---	------------------