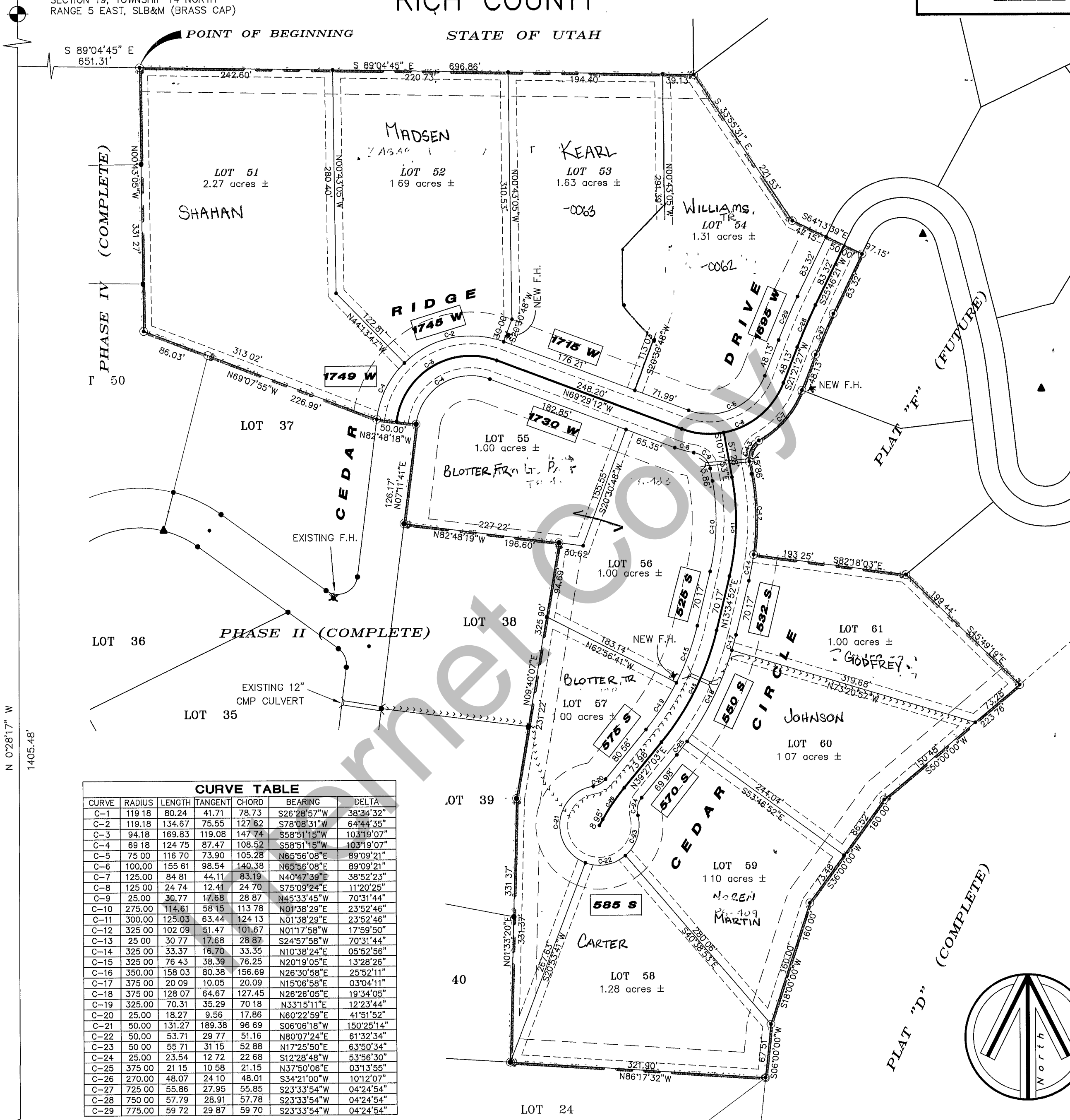


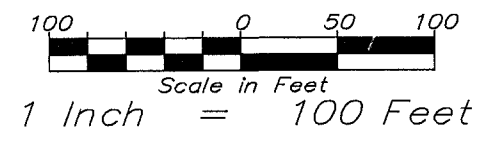
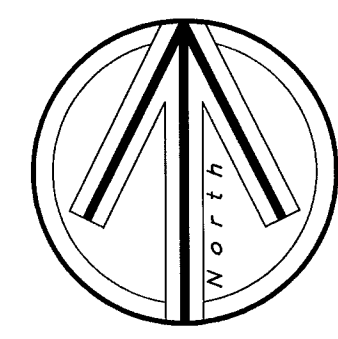
RICH COUNTY

STATE OF UTAH

WEST QUARTER CORNER
 SECTION 19, TOWNSHIP 14 NORTH
 RANGE 5 EAST, SLB&M (BRASS CAP)



CURVE	RADIUS	LENGTH	TANGENT	CHORD	BEARING	DELTA
C-1	119.18	80.24	41.71	78.73	S26°28'57"W	38°34'32"
C-2	119.18	134.67	75.55	127.62	S78°08'31"W	64°44'35"
C-3	94.18	169.83	119.08	147.74	S58°51'15"W	103°19'07"
C-4	69.18	124.75	87.47	108.52	S58°51'15"W	103°19'07"
C-5	75.00	116.70	73.90	105.28	N65°56'08"E	89°09'21"
C-6	100.00	155.61	98.54	140.38	N65°56'08"E	89°09'21"
C-7	125.00	84.81	44.11	83.19	N40°47'39"E	38°52'23"
C-8	125.00	24.74	12.41	24.70	S75°09'24"E	11°20'25"
C-9	25.00	30.77	17.68	28.87	N45°33'45"W	70°31'44"
C-10	275.00	114.61	58.15	113.78	N01°38'29"E	23°52'46"
C-11	300.00	125.03	63.44	124.13	N01°38'29"E	23°52'46"
C-12	325.00	102.09	51.47	101.67	N01°17'58"W	17°59'50"
C-13	25.00	30.77	17.68	28.87	S24°57'58"W	70°31'44"
C-14	325.00	33.37	16.70	33.35	N10°38'24"E	05°52'56"
C-15	325.00	76.43	38.39	76.25	N20°19'05"E	13°28'26"
C-16	350.00	158.03	80.38	156.69	N26°30'58"E	25°52'11"
C-17	375.00	20.09	10.05	20.09	N15°06'58"E	03°04'11"
C-18	375.00	128.07	64.67	127.45	N26°28'05"E	19°34'05"
C-19	325.00	70.31	35.29	70.18	N33°15'11"E	12°23'44"
C-20	25.00	18.27	9.56	17.86	N60°22'59"E	41°51'52"
C-21	50.00	131.27	189.38	96.69	S06°06'18"W	150°25'14"
C-22	50.00	53.71	29.77	51.16	N80°07'24"E	61°32'34"
C-23	50.00	55.71	31.15	52.88	N17°25'50"E	63°50'34"
C-24	25.00	23.54	12.72	22.68	S12°28'48"W	53°56'30"
C-25	375.00	21.15	10.58	21.15	N37°50'06"E	03°13'55"
C-26	270.00	48.07	24.10	48.01	S34°21'00"W	10°12'07"
C-27	725.00	55.86	27.95	55.85	S23°33'54"W	04°24'54"
C-28	750.00	57.79	28.91	57.78	S23°33'54"W	04°24'54"
C-29	775.00	59.72	29.87	59.70	S23°33'54"W	04°24'54"



BASIS OF BEARING
 (WEST LINE OF
 SEC. 19)

GARDEN CITY LIMITS
 (INSIDE)

SOUTHWEST CORNER
 SECTION 19, TOWNSHIP 14 NORTH
 RANGE 5 EAST, SLB&M (BRASS CAP)

REVISIONS

BRIDGERLAND VILLAGE
 PLAT "E", PH. V

SECTION 19
 T. 14 N., R. 5 E.
 S.L.B. & M.

SCALE
 1"=100'

41-19-020-LOTS