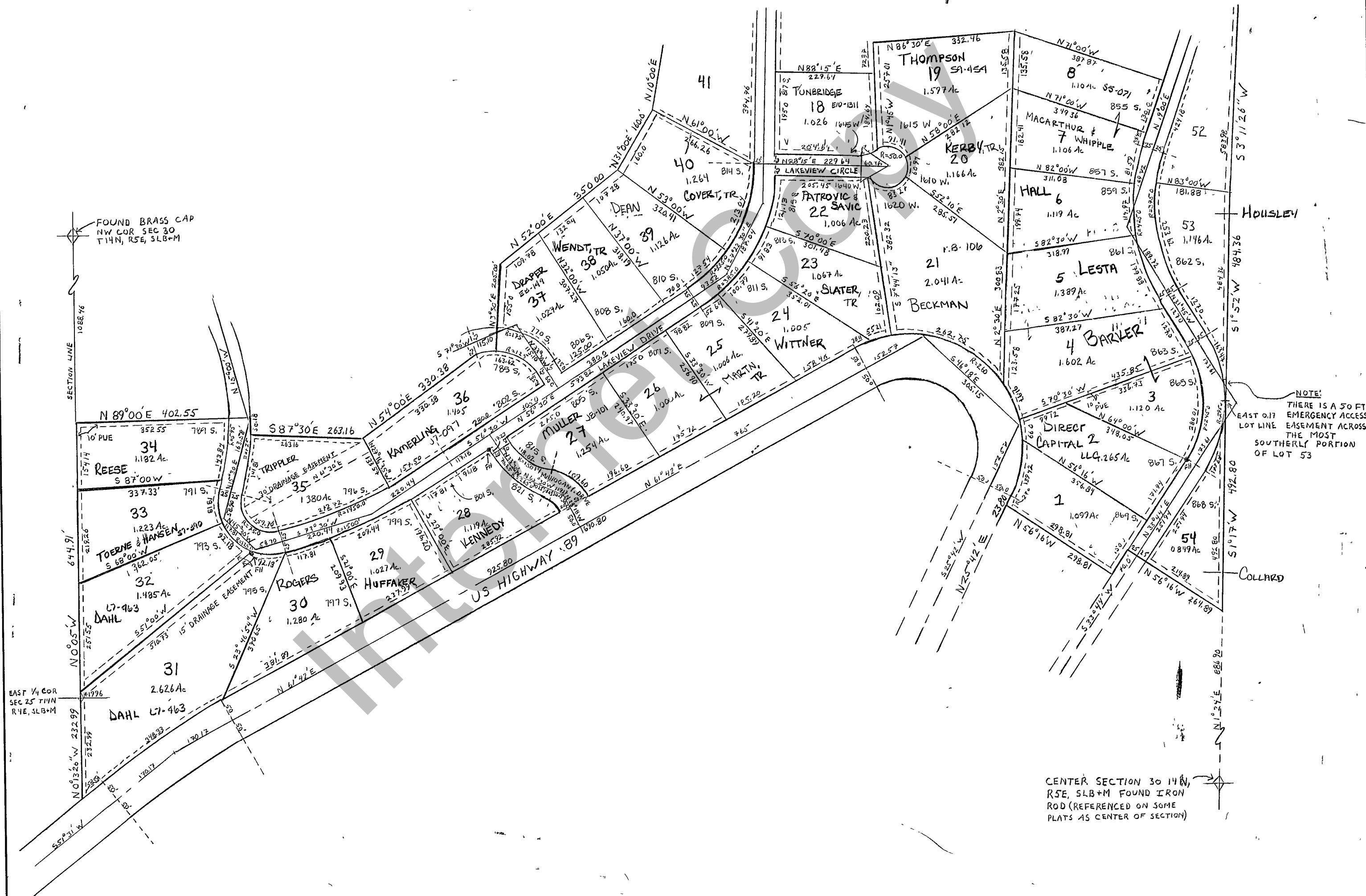


RICH COUNTY
 SECTION 30 T.14 N.R. 5E, S.L.B.&M.

SEE SECTION 19, T14N, R5E



CENTER SECTION 30 14N,
 R5E, S.L.B.&M FOUND IRON
 ROD (REFERENCED ON SOME
 PLATS AS CENTER OF SECTION)

41-30-040-Lots

REVISIONS	BRIGERLAND VILLAGE PLAT "D"	Section 30 T.14N R.5E	book	page
	SHEET 2 OF 2 SHEETS	drawn by		
		date		
				scale 1" = 200'