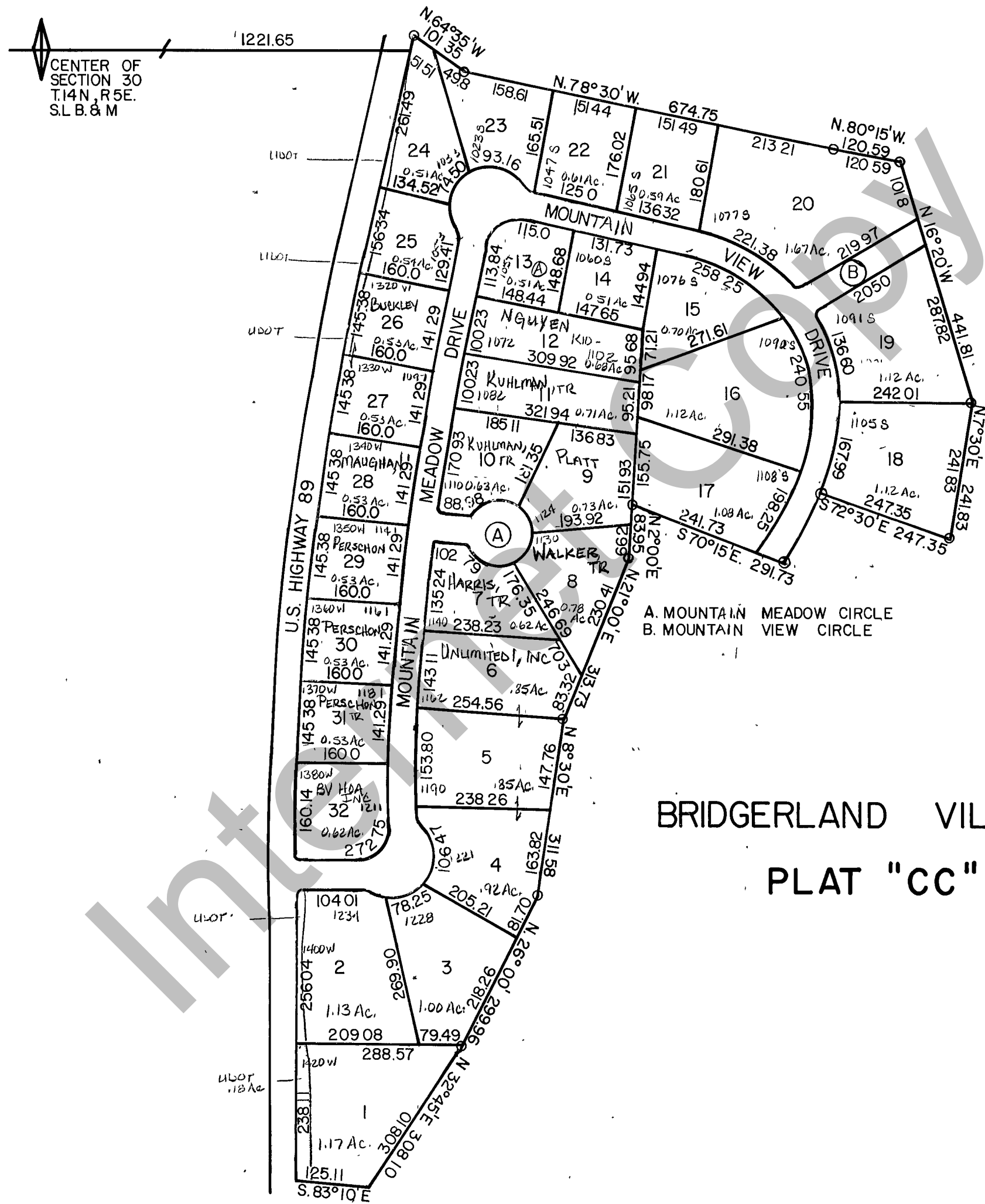


RICH COUNTY
PART OF SEC. 30, T.14N.,R.5E. S.L.B.&M.



BRIDGERLAND VILLAGE
PLAT "CC"

© Cobby Hole, LLC

REVISIONS				INITIAL	AND	DATE	NOTES	U. S. T. C. approval Date:	BRIDGERLAND VIL. PLAT "CC"	41-30-050-Lots	
						Section 30 T 14 R 5 E.				book	page
										drawn by: DE	scale 1" = 200'
										date: 5-82	