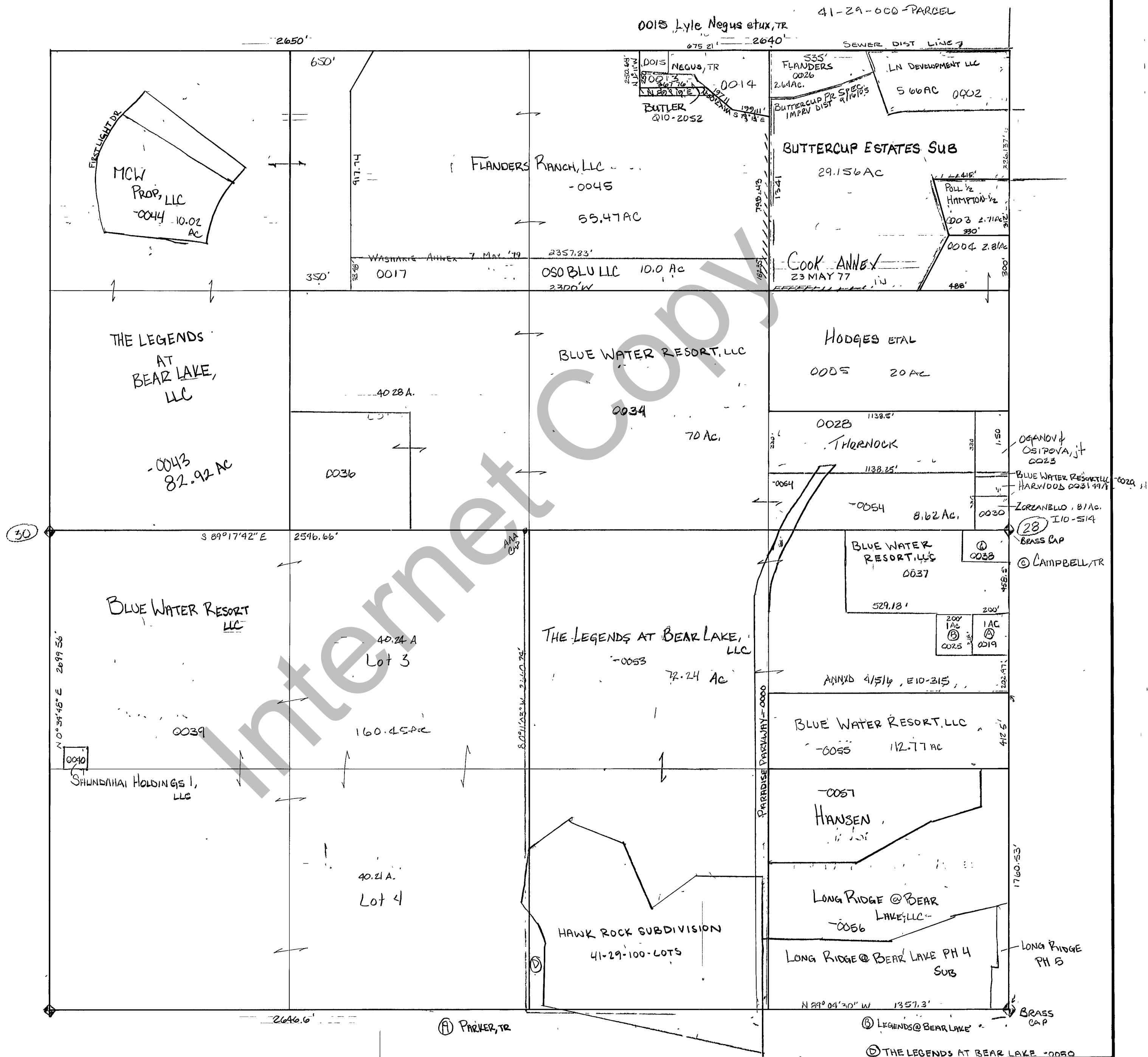


RICH COUNTY
 SECTION 29, T.14N., R.5E., S.L.B. & M.



REVISIONS

THIS PLAT IS MADE SOLELY FOR THE PURPOSE OF ASSISTING IN LOCATING THE LAND, AND THE RECORDER ASSUMES NO LIABILITY FOR VARIATIONS, IF ANY, WITH AN ACTUAL SURVEY.

Section 29 T.14N. R.5E
 drawn by GP date OCT. 1978 book page
 scale 1" = 400'