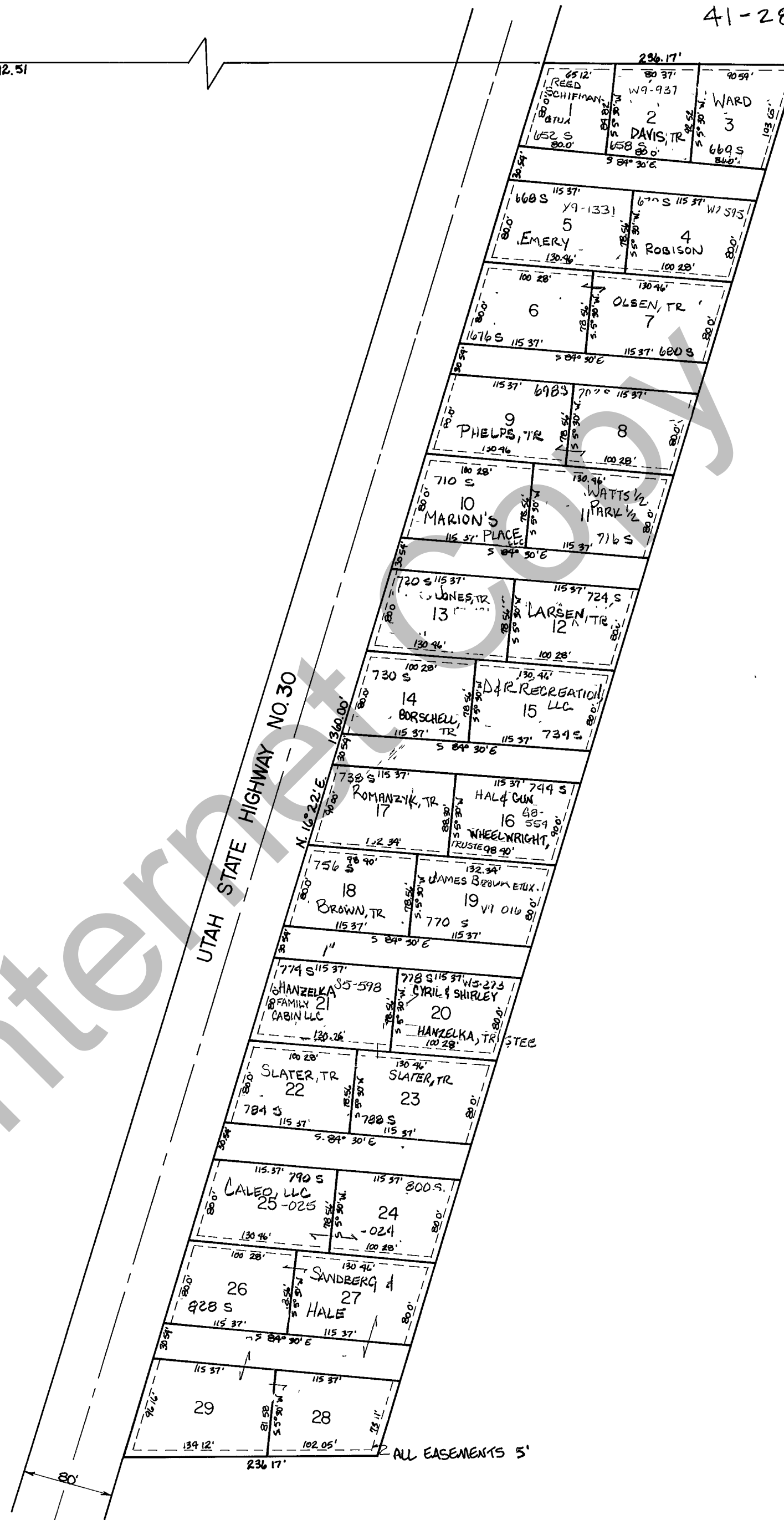


RICH COUNTY
 PART OF SEC. 28, T.14N., R.5E., S.L.B.&M.

41-28-450-LOTS

N.W. CORNER SEC. 28

1792.51



Intermittent

REVISIONS	

SHORE LODGE ESTATE

Section 28, T.14N., R. 5E	book	page
drawn by L.M.	date NOV. 78	scale 1" = 100'