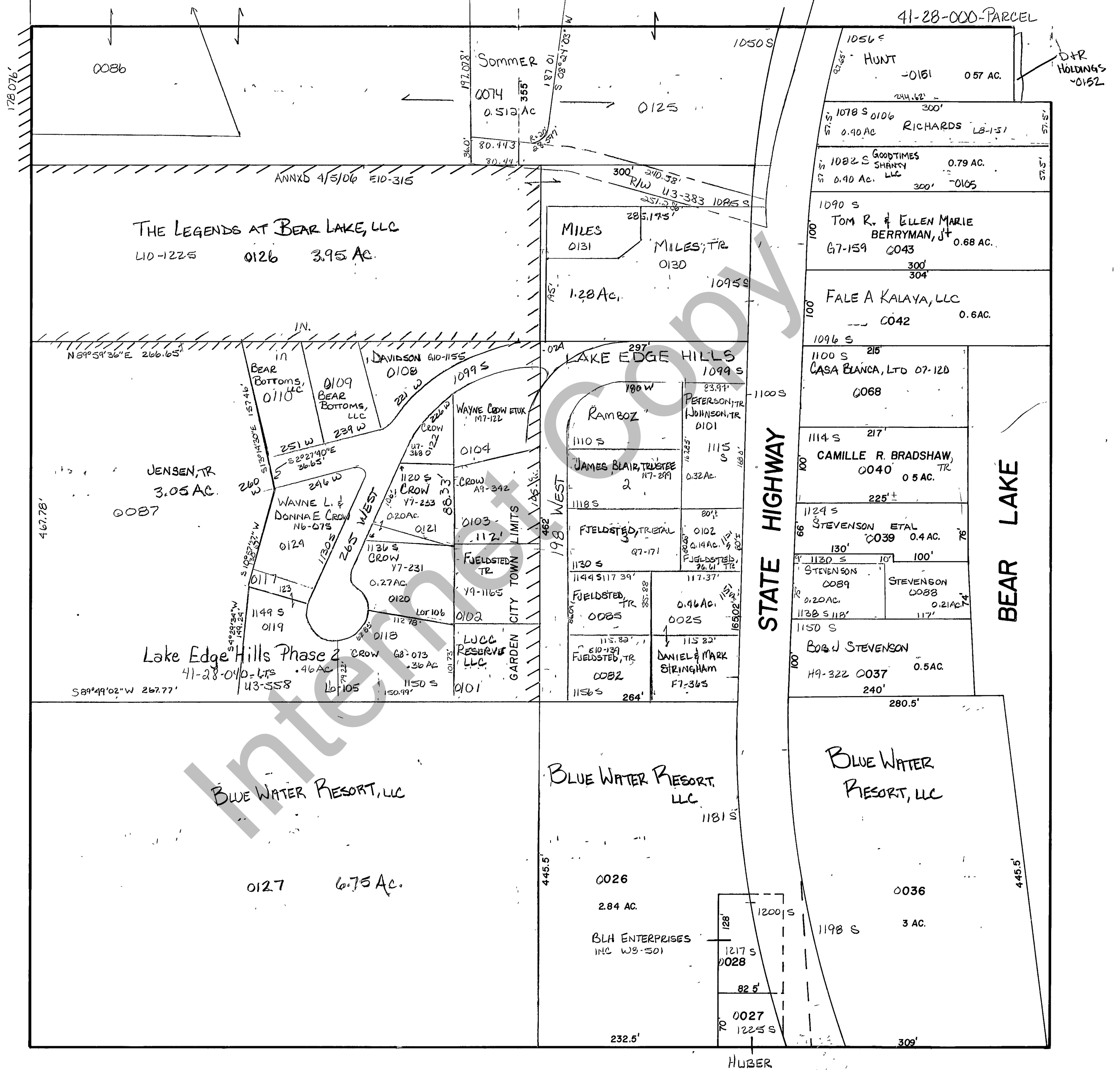


RICH COUNTY

NW1/4 SW1/4 SECTION 28 T. 14 N. R. 5 E., S.L.B.&M. (Lot 3)



REVISIONS	

THIS PLAT IS MADE SOLELY FOR THE PURPOSE OF ASSISTING IN LOCATING THE LAND, AND THE RECORDER ASSUMES NO LIABILITY FOR VARIATIONS, IF ANY, WITH AN ACTUAL SURVEY.

NW1/4 SW1/4 Section 28 T. 14 N. R. 5 E.	book _____ page _____
drawn by MVH	date 12-80
scale 1"=100'	