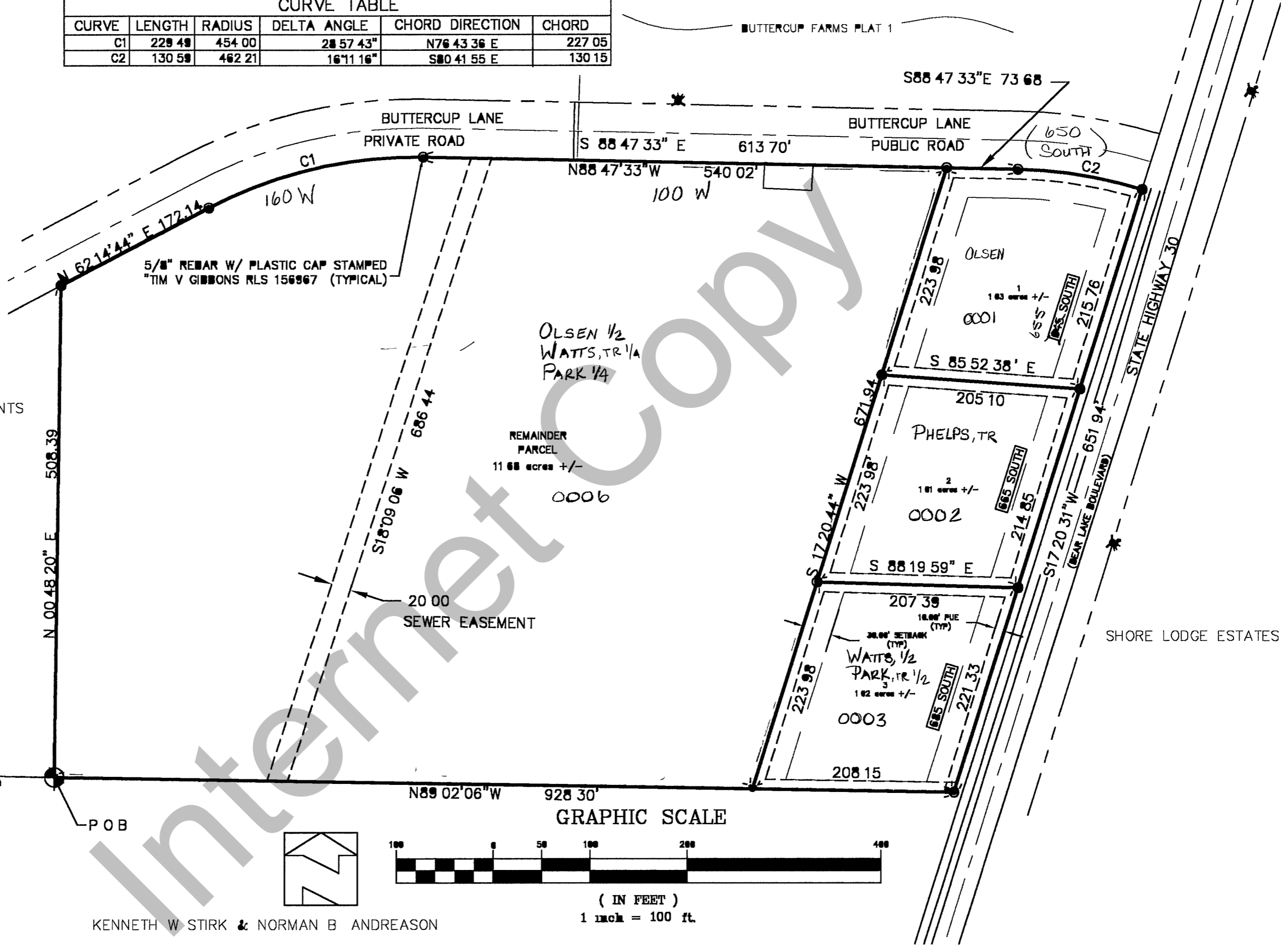


RICH COUNTY

NW SC 28
 BASIS OF BEARING
 5368.71
 710.93
 500.42 12" W
 SE SC 28

CURVE TABLE					
CURVE	LENGTH	RADIUS	DELTA ANGLE	CHORD DIRECTION	CHORD
C1	228.48	454.00	28° 57' 43"	N76° 43' 36" E	227.05
C2	130.59	462.21	16° 11' 16"	S80° 41' 55" E	130.15



KENNETH W. STIRK & NORMAN B. ANDREASON

41 38-050-LTs

			LAKESIDE SUBDIVISION	SECTION 18 T 14 N R 5 E	SCALE 1" = 100'
NO	REVISION	DATE			