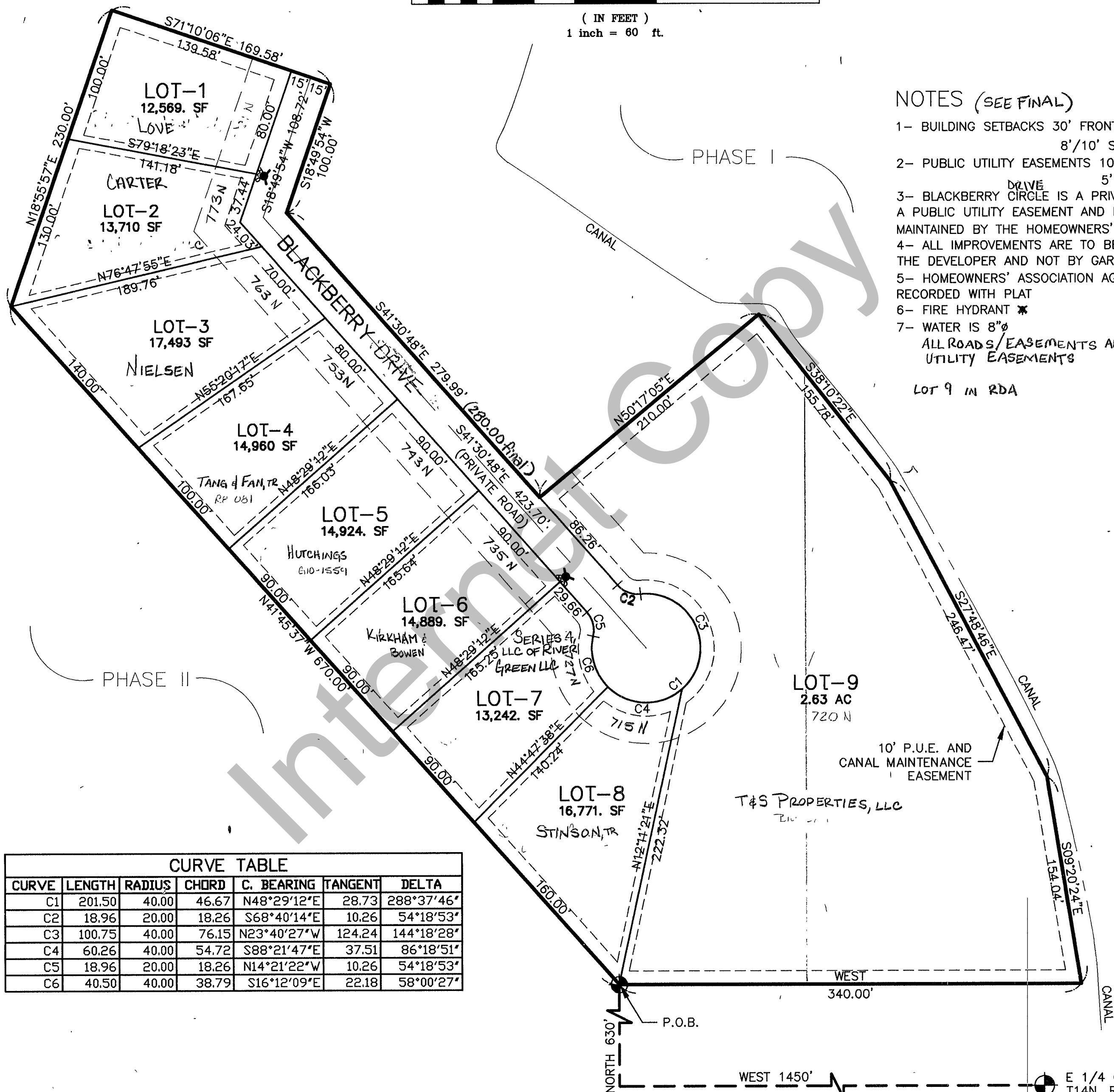
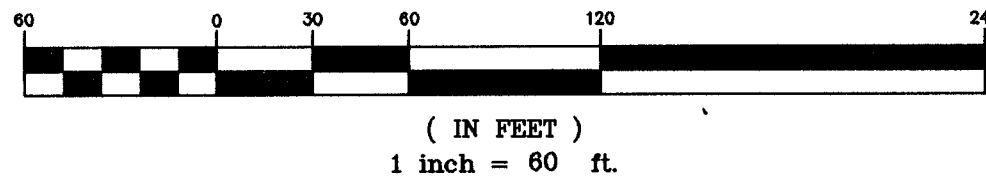


NE/4 SECTION 17, T14N, R5E, SLB&M  
RASPBERRY PATCH ESTATES - UNIT V

GRAPHIC SCALE



NOTES (SEE FINAL)

- 1- BUILDING SETBACKS 30' FRONT/REAR  
8'/10' SIDES
  - 2- PUBLIC UTILITY EASEMENTS 10' FRONT/REAR  
5' SIDES
  - 3- BLACKBERRY DRIVE IS A PRIVATE ROAD WITH A PUBLIC UTILITY EASEMENT AND IS TO BE MAINTAINED BY THE HOMEOWNERS' ASSOCIATION.
  - 4- ALL IMPROVEMENTS ARE TO BE FUNDED BY THE DEVELOPER AND NOT BY GARDEN CITY.
  - 5- HOMEOWNERS' ASSOCIATION AGREEMENT IS RECORDED WITH PLAT
  - 6- FIRE HYDRANT \*
  - 7- WATER IS 8"Ø
- ALL ROADS/EASEMENTS ARE PUBLIC UTILITY EASEMENTS

LOT 9 IN RDA

CURVE TABLE

CURVE	LENGTH	RADIUS	CHORD	C. BEARING	TANGENT	DELTA
C1	201.50	40.00	46.67	N48°29'12"E	28.73	288°37'46"
C2	18.96	20.00	18.26	S68°40'14"E	10.26	54°18'53"
C3	100.75	40.00	76.15	N23°40'27"W	124.24	144°18'28"
C4	60.26	40.00	54.72	S88°21'47"E	37.51	86°18'51"
C5	18.96	20.00	18.26	N14°21'22"W	10.26	54°18'53"
C6	40.50	40.00	38.79	S16°12'09"E	22.18	58°00'27"

REVISIONS	INITIAL	AND DATE

NOTES

U.S.T.C. approval Date:

PLAT DEPARTMENT  
RICH COUNTY, UTAH  
RASPBERRY PATCH ESTATES - UNIT V

SECTION 17 T 14N R 5E  
drawn by:      date:

book page  
scale 1"=60'

41-17-140-LOTS

E 1/4 COR, SECTION 17  
T14N, R5E, SLB&M