

RICH COUNTY, UTAH

PLAT No _____
BOOK _____ PAGE _____

Calculated C 1/4 cor
see subdivision plats

Calculated E 1/16th cor see
subdivision plats

Found rebar see
subdivision plats

615 04'

N 00°29'18" E

Open Space Area A
6 0296 Acres m/1 of open space above
east line of the canal

Common Area E
97 873 sq ft



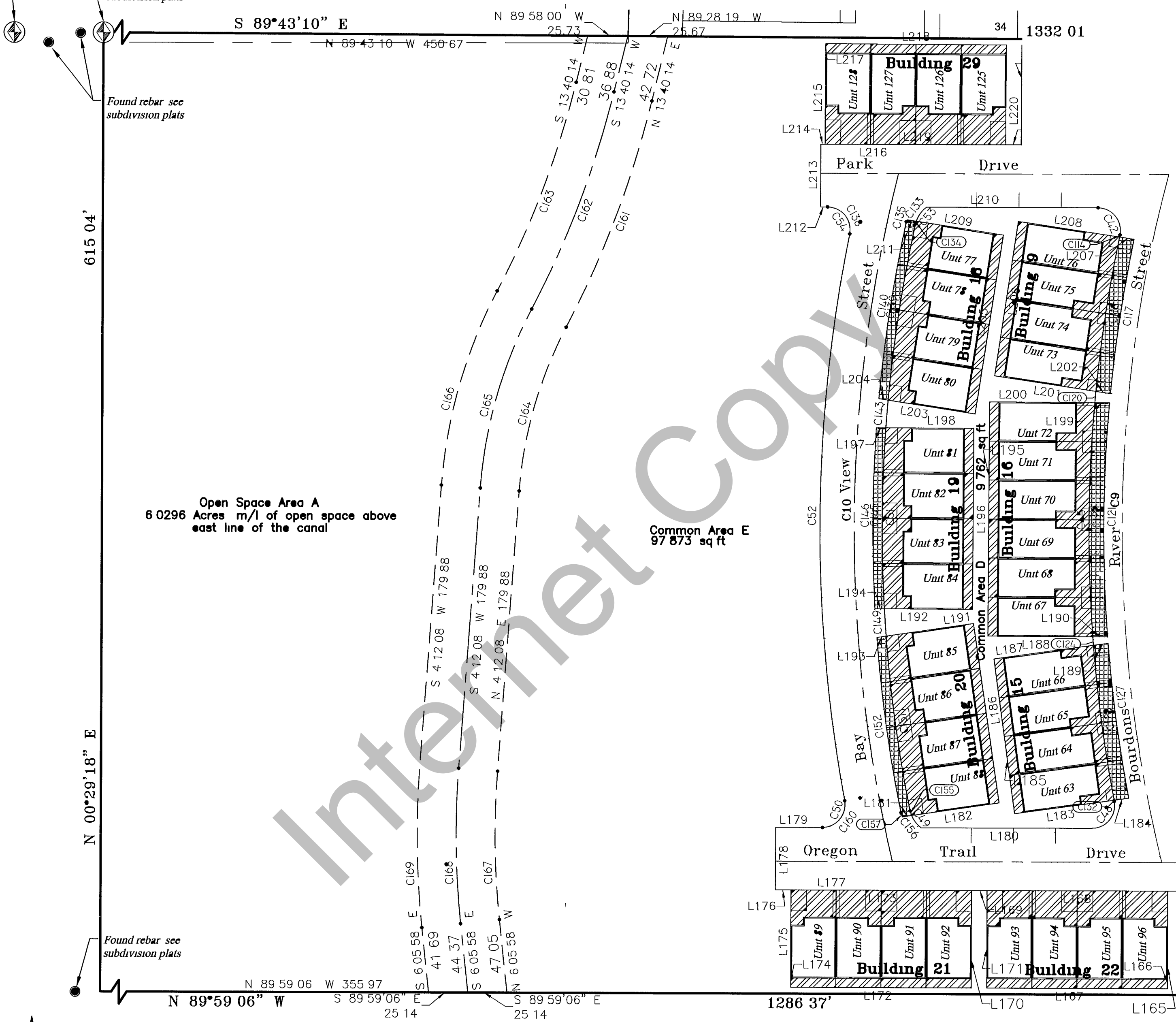
Legend

- STREET CENTERLINE
- FND SECTION CORNER
- CALC SECTION CORNER
- FND REBAR AND CAP
- PRIVATE ROADS
- PRIVATE UNITS
- COMMON AREA
- LIMITED COMMON AREA
- SPECIAL USE AREA PER CC&R DOCUMENTS

Building Unit Dimensions
Buildings 1-5 9-11 15-17 = 25 x50
Buildings 6-8 12-14 23-28 = 29 x39

41 17 260 LOTS

REVISION No _____ DATE _____	PARADISE PARK TOWNHOMES	SECTION <u>17</u> T <u>14</u> N R <u>5</u> E	BOOK _____ PAGE _____ SCALE 1" = 50'
---------------------------------	------------------------------------	---	---



Unit 120

Unit 97

Unit 98

Unit 96

Unit 95

Unit 94

Unit 93

Unit 92

Unit 91

Unit 90

Unit 89

Unit 88

Unit 87

Unit 86

Unit 85

Unit 84

Unit 83

Unit 82

Unit 81

Unit 80

Unit 79

Unit 78

Unit 77

Unit 76

Unit 75

Unit 74

Unit 73

Unit 72

Unit 71

Unit 70

Unit 69

Unit 68

Unit 67

Unit 66

Unit 65

Unit 64

Unit 63

Unit 62

Unit 61

Unit 60

Unit 59

Unit 58

Unit 57

Unit 56

Unit 55

Unit 54

Unit 53

Unit 52

Unit 51

Unit 50

Unit 49

Unit 48

Unit 47

Unit 46

Unit 45

Unit 44

Unit 43

Unit 42

Unit 41

Unit 40

Unit 39

Unit 38

Unit 37

Unit 36

Unit 35

Unit 34

Unit 33

Unit 32

Unit 31

Unit 30

Unit 29

Unit 28

Unit 27

Unit 26

Unit 25

Unit 24

Unit 23

Unit 22

Unit 21

Unit 20

Unit 19

Unit 18

Unit 17

Unit 16

Unit 15

Unit 14

Unit 13

Unit 12

Unit 11

Unit 10

Unit 9

Unit 8

Unit 7

Unit 6

Unit 5

Unit 4

Unit 3

Unit 2

Unit 1