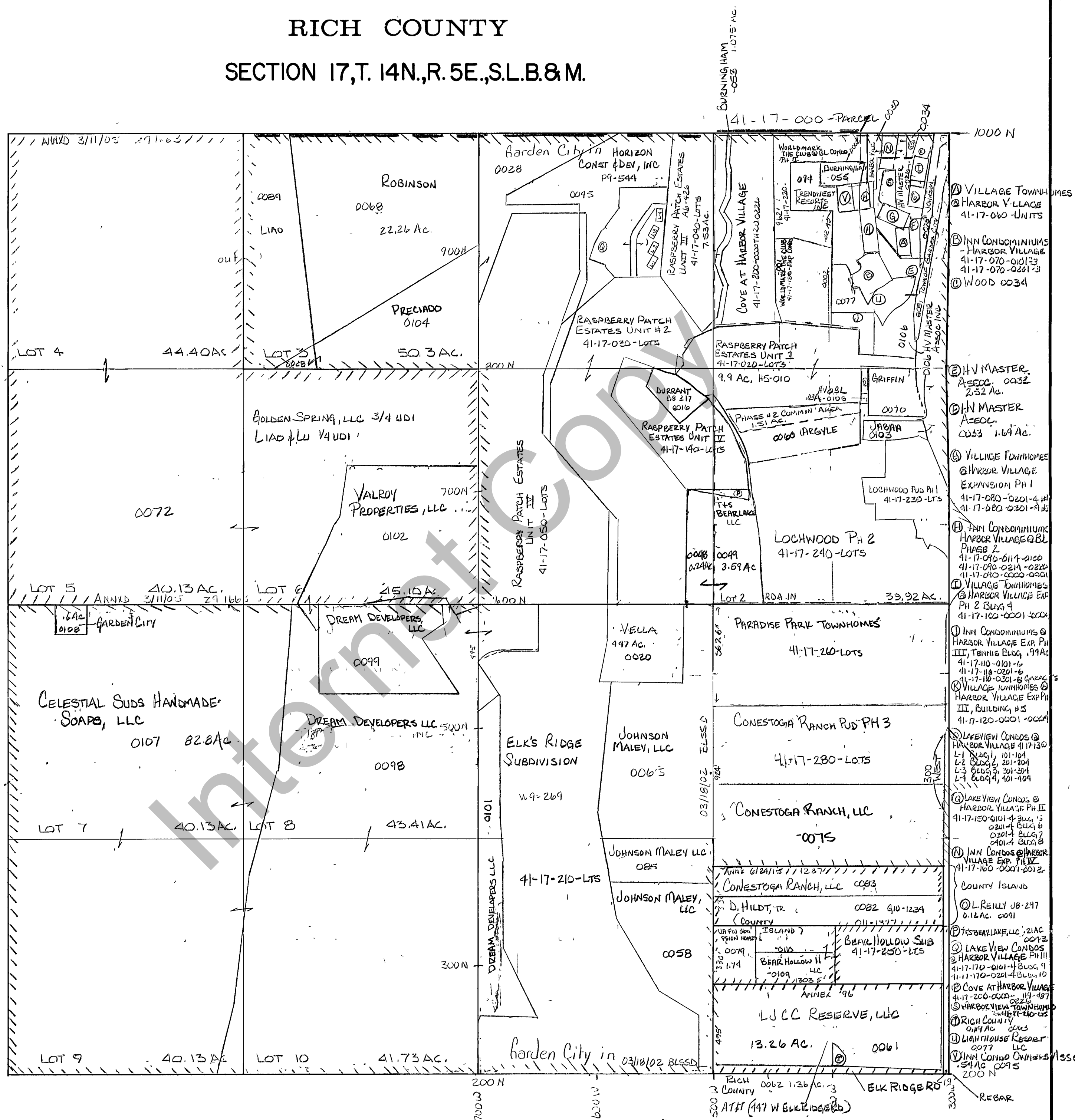


RICH COUNTY SECTION 17, T. 14N., R. 5E., S.L.B. & M.



- ① VILLAGE TOWNHOMES
- ② HARBOR VILLAGE 41-17-060-UNITS
- ③ INN CONDOMINIUMS - HARBOR VILLAGE 41-17-070-010123 41-17-070-02013
- ④ WOOD 0034
- ⑤ HV MASTER ASSOC. 0032 2.52 AC.
- ⑥ HV MASTER ASSOC. 0033 1.69 AC.
- ⑦ VILLAGE TOWNHOMES @ HARBOR VILLAGE EXPANSION PH I 41-17-080-0201-4-11 41-17-080-0301-4-11
- ⑧ INN CONDOMINIUMS HARBOR VILLAGE @ BL PHASE 2 41-17-090-0117-0102 41-17-090-0211-0222 41-17-090-0300-0301
- ⑨ VILLAGE TOWNHOMES @ HARBOR VILLAGE EXP PH 2 BLDG 4 41-17-100-0001-0004
- ⑩ INN CONDOMINIUMS @ HARBOR VILLAGE EXP PH III, TENNIS BLDG, .99 AC 41-17-110-0101-6 41-17-110-0201-6 41-17-110-0301-6 GARAGE
- ⑪ VILLAGE TOWNHOMES @ HARBOR VILLAGE EXP PH III, BUILDING #5 41-17-120-0001-0004
- ⑫ LAKEVIEW CONDOS @ HARBOR VILLAGE 41-17-130 L-1 BLDG 1, 101-104 L-2 BLDG 2, 201-204 L-3 BLDG 3, 201-204 L-4 BLDG 4, 401-404
- ⑬ LAKEVIEW CONDOS @ HARBOR VILLAGE PH II 41-17-150-0101-4 BLDG 5 0201-4 BLDG 6 0301-4 BLDG 7 0401-4 BLDG 8
- ⑭ INN CONDOS @ HARBOR VILLAGE EXP PH IV 41-17-160-0001-2012
- COUNTY ISLAND
- ⑮ L. REILLY 08-297 0.12 AC. 0091
- ⑯ T'S BEARLAKE, LLC 21AC 0072
- ⑰ LAKEVIEW CONDOS @ HARBOR VILLAGE PH III 41-17-170-0101-4 BLDG 9 41-17-170-0201-4 BLDG 10
- ⑱ COVE AT HARBOR VILLAGE 41-17-200-0000-117-187
- ⑲ HARBORVIEW TOWNHOMES 41-17-210-LTS
- ⑳ RICH COUNTY 0.19 AC 0043
- ㉑ LIGHTHOUSE RESORT 0077 LLC
- ㉒ INN CONDO OWNERS ASSOC. 0095 .54 AC 0095

REVISIONS	

THIS PLAT IS MADE SOLELY FOR THE PURPOSE OF ASSISTING IN LOCATING THE LAND, AND THE RECORDER ASSUMES NO LIABILITY FOR VARIATIONS IF ANY, WITH AN ACTUAL SURVEY

Section 17 T. 14N. R. 5E. book page
 drawn by GP date OCT. 1978 scale 1" = 400'