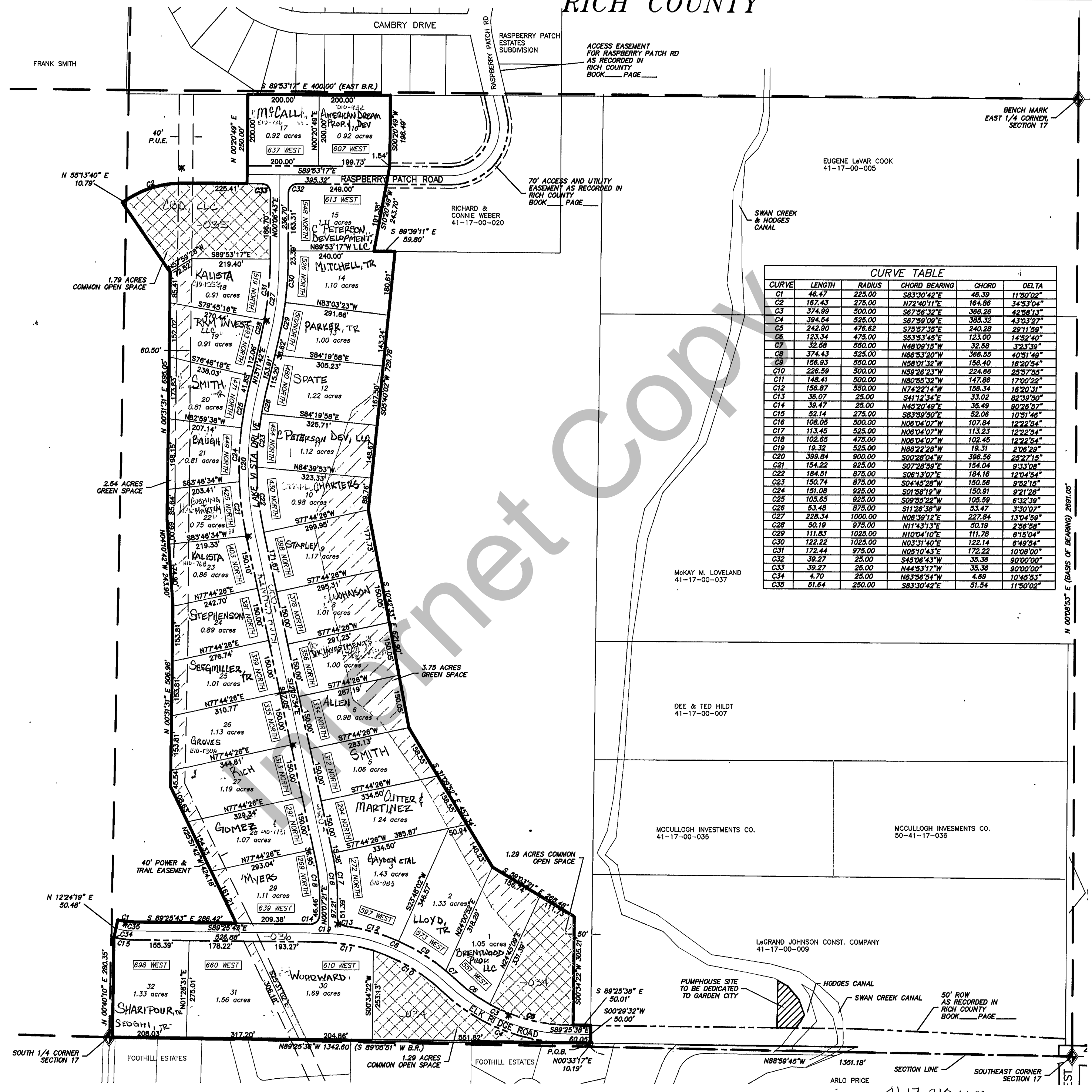


RICH COUNTY



CURVE TABLE					
CURVE	LENGTH	RADIUS	CHORD BEARING	CHORD	DELTA
C1	48.47	225.00	S83°30'42"E	48.39	11°30'02"
C2	187.43	275.00	N72°40'11"E	164.86	34°33'04"
C3	374.89	500.00	S87°56'32"E	366.26	42°58'13"
C4	394.54	525.00	S87°59'09"E	385.32	43°03'27"
C5	242.90	476.62	S75°57'35"E	240.28	29°11'59"
C6	123.34	478.00	S83°53'45"E	123.00	14°32'40"
C7	32.68	550.00	N48°09'15"W	32.58	3°23'39"
C8	374.43	525.00	N66°53'20"W	366.55	40°51'49"
C9	158.93	550.00	N58°01'32"W	158.40	16°20'54"
C10	226.59	500.00	N59°26'23"W	224.66	25°57'55"
C11	148.41	500.00	N80°55'32"W	147.86	17°00'22"
C12	158.87	550.00	N74°22'14"W	156.34	16°20'31"
C13	36.07	25.00	S41°12'34"E	33.02	82°39'50"
C14	39.47	25.00	N45°20'49"E	35.49	90°26'57"
C15	52.14	275.00	S83°59'50"E	52.06	10°31'46"
C16	108.05	500.00	N06°04'07"W	107.84	12°22'54"
C17	113.45	525.00	N06°04'07"W	113.23	12°22'54"
C18	102.65	475.00	N06°04'07"W	102.45	12°22'54"
C19	19.32	525.00	N88°28'28"W	19.31	2°06'29"
C20	399.84	900.00	S00°28'04"W	396.56	25°27'15"
C21	154.22	925.00	S07°28'59"E	154.04	9°33'08"
C22	184.51	875.00	S06°13'07"E	184.16	12°04'54"
C23	150.74	875.00	S04°45'28"W	150.56	9°52'15"
C24	151.08	925.00	S01°58'19"W	150.91	9°21'28"
C25	105.65	925.00	S09°55'22"W	105.59	6°32'39"
C26	53.48	875.00	S11°26'38"W	53.47	3°30'07"
C27	228.34	1000.00	N06°39'12"E	227.84	13°04'59"
C28	50.19	975.00	N11°43'13"E	50.19	2°56'58"
C29	111.83	1025.00	N10°04'10"E	111.78	6°15'04"
C30	122.22	1025.00	N03°31'40"E	122.14	6°49'54"
C31	172.44	975.00	N05°10'43"E	172.22	10°08'00"
C32	39.27	25.00	S45°06'43"W	35.36	90°00'00"
C33	39.27	25.00	N44°53'17"W	35.36	90°00'00"
C34	4.70	25.00	N83°56'54"W	4.69	10°45'53"
C35	51.64	250.00	S83°30'42"E	51.54	11°30'02"

NO. REVISION DATE			ELK'S RIDGE SUBDIVISION SECTION 17 T 14 N R 5 E	SCALE 1" = 200'