



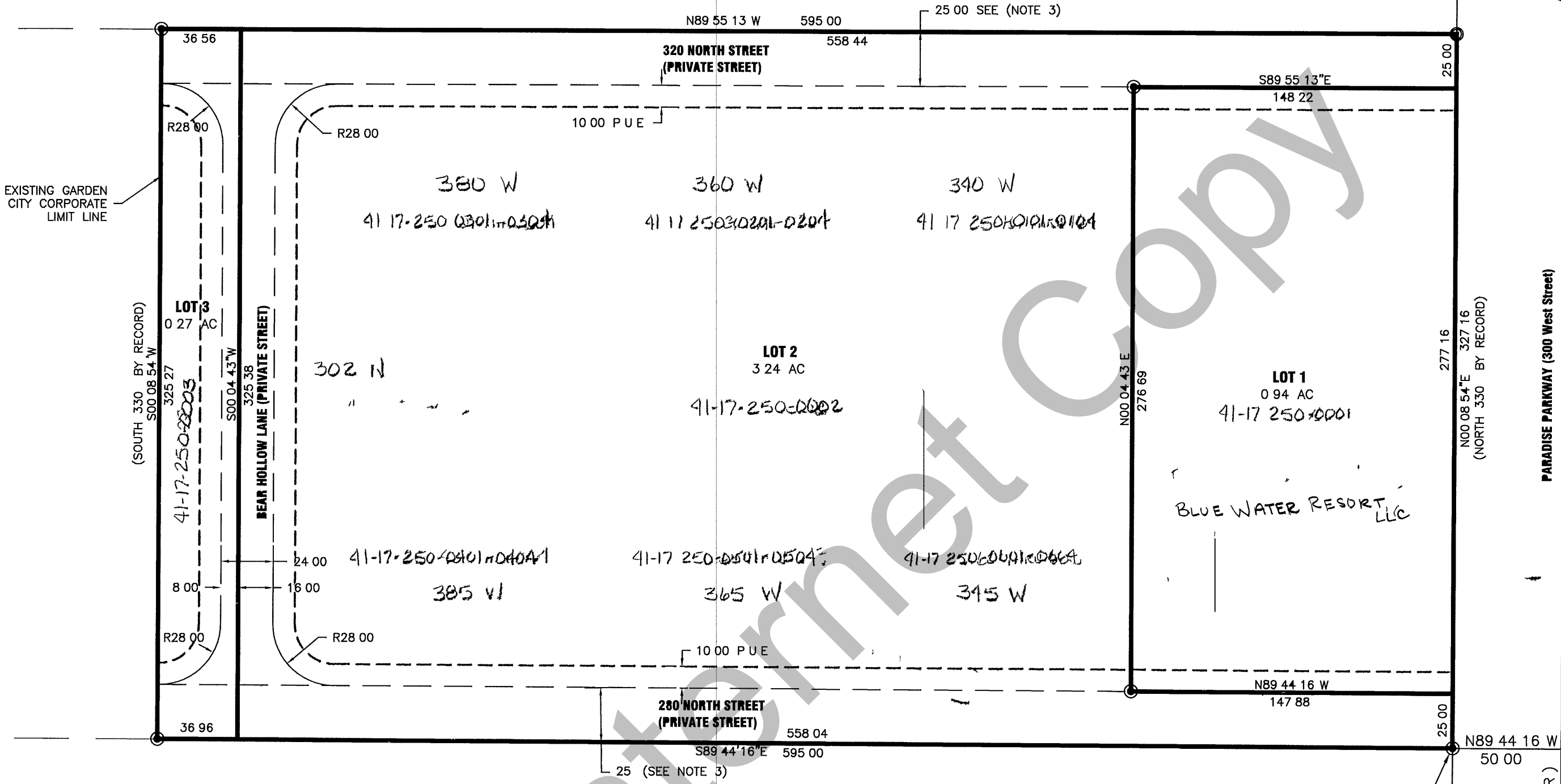
0 50 100  
SCALE 1"=50'

# BEAR HOLLOW SUBDIVISION FINAL PLAT

PART OF THE SOUTHEAST QUARTER OF SECTION 17,  
TOWNSHIP 14 NORTH, RANGE 5 EAST,  
SALT LAKE BASELINE AND MERIDIAN  
RICH COUNTY  
GARDEN CITY, UTAH

SCHERBEL  
BRASS CAP  
17 16

DEE HILDT



EXISTING GARDEN  
CITY CORPORATE  
LIMIT LINE

(SOUTH 330 BY RECORD)  
S00.08 54° W

325.27  
41-17-250-0003

325.38  
BEAR HOLLOW LANE (PRIVATE STREET)

8.00  
R28.00

36.96

N89 55 13 W 595.00  
558.44

320 NORTH STREET  
(PRIVATE STREET)

25.00 SEE (NOTE 3)

S89 55 13° E  
148.22

380 W  
41-17-250-0001

360 W  
41-17-250-0002

340 W  
41-17-250-0004

302 N

LOT 2  
3.24 AC  
41-17-250-0002

LOT 1  
0.94 AC  
41-17-250-0001

BLUE WATER RESORT  
LLC

24.00 41-17-250-0001  
385 W

41-17-250-0004  
365 W

41-17-250-0003  
345 W

280 NORTH STREET  
(PRIVATE STREET)

S89 44 16° E 595.00  
558.04

25 (SEE NOTE 3)

N89 44 16 W  
147.88

277.16  
N00.08 54° E 327.16  
(NORTH 330 BY RECORD)

PARADISE PARKWAY (300 West Street)

500.86  
(NORTH 30 RDS/495 B.R.)

POB

#5 REBAR

AL CAP  
#317443

N 88° 59' 55" W  
2702.33

17 16  
20 21

41-17-250-LLC

LEGRAND JOHNSON CONSTRUCTION CO



SHEET

1

OF 1 SHEETS



ALLIANCE CONSULTING  
ENGINEERS

88 WEST CENTER  
LOGAN, UTAH 84321  
(435) 755-5121

PROJECT

BEAR HOLLOW SUBDIVISION  
FINAL PLAT

PART OF THE SOUTHEAST QUARTER OF SECTION 17  
TOWNSHIP 14 NORTH RANGE 5 EAST  
SALT LAKE BASELINE AND MERIDIAN  
RICH COUNTY  
GARDEN CITY UTAH

FINAL PLAT

SCALE  
1"=50'

DATE  
12-24-2008

DRAWN BY  
BGL

DRAWING