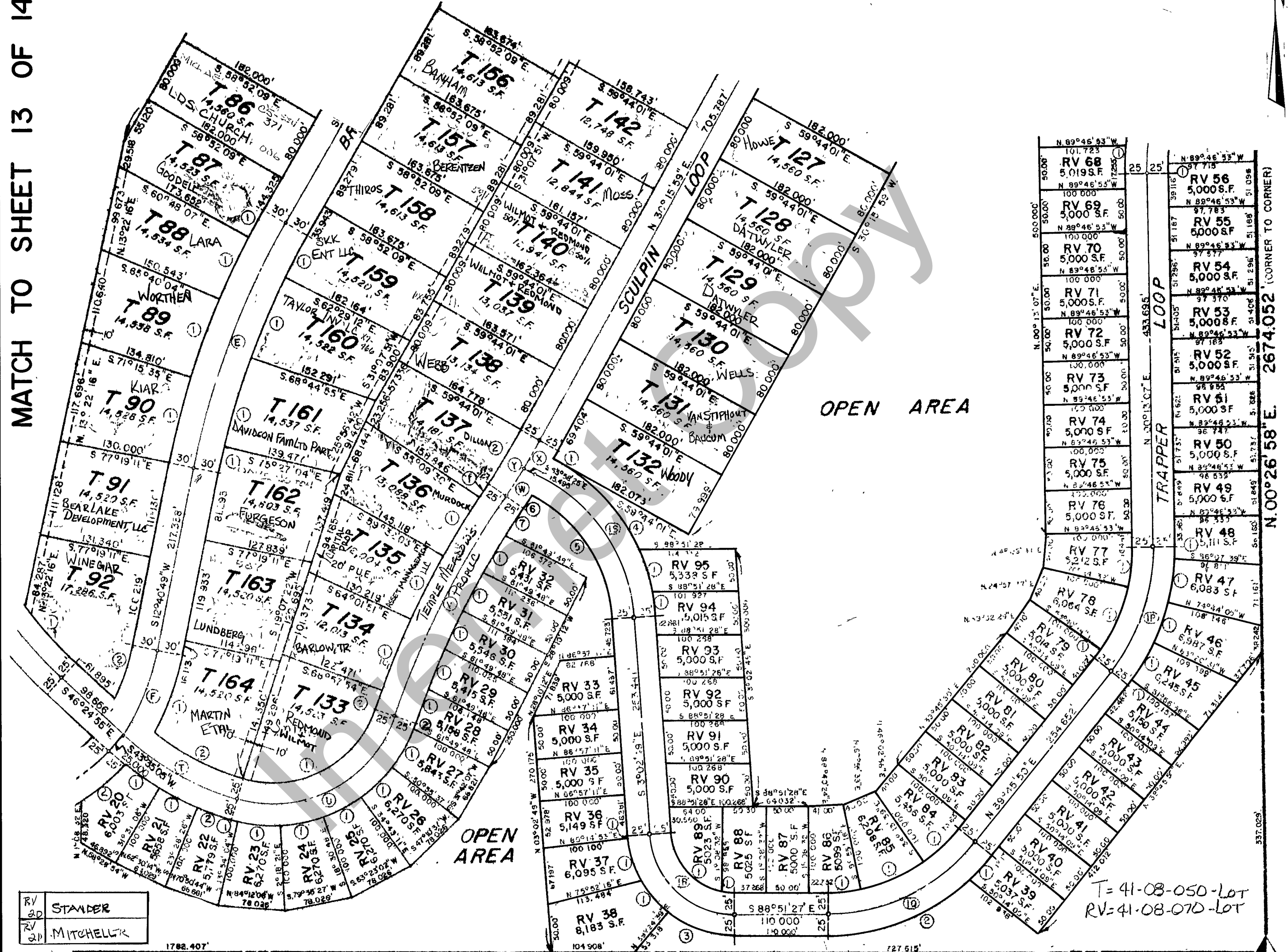


RICH COUNTY, UTAH

MATCH TO SHEET 11 OF 14

MATCH TO SHEET 13 OF 14



RV 20	STANDER
RV 21	MITCHELL

RV 22	MITCHELL	RV 31	ROGERS TR	RV 40		RV 49	MURDOCK	RV 55	CHECKETTS	RV 72	MESSE/KENT	RV 78	STRONG TR	RV 84	BARLOW ENRP	RV 88	MEDINA	RV 92	ROGERS
RV 23	BROWN	RV 32	SLAVENWHITE TR	RV 41	STARLEY ETAL	RV 50	WALKER	RV 56	FITZGERALD	RV 73	GABBY DEV LLC	RV 79	CROSBIE TR	RV 85	MEDINA & PRINCE	RV 89	NORDFORS	RV 93	HANUSAKER
RV 24	WILLIAMS	RV 33	LOVELES	RV 42	BARRACLOUGH TR	RV 51	SCHMILL	RV 62	TRUILLO ETAL	RV 74	BARRACLOUGH	RV 80	CROSBIE TR	RV 86	CHILD	RV 90	JOHNSON	RV 94	WILKINSON
RV 25	REED & WILLIS TRUSTEE	RV 34	LOVELES	RV 43		RV 52	ZBES 115904B	RV 63	FISHER TR	RV 75	BARRACLOUGH	RV 81	MORRIS TR	RV 87	TURNER & KAY	RV 91	WEBB	RV 95	CALL
RV 26	ALLEN	RV 35	DI MARCO TR	RV 44	CROSBIE TR	RV 53	MCCANN	RV 64		RV 76	HARRIS ETAL	RV 82	DEEM						
RV 27	CHATTERSON	RV 36	TIMMERSON	RV 45		RV 54	CHECKETTS	RV 65		RV 77	STRONG TR	RV 83	DEEM						
RV 28	ROGERS	RV 37	PRESCOTT	RV 46	BRADSHAW														
RV 29		RV 38	BECKER	RV 47	ANDERSON TR														
RV 30	SALAZAR	RV 39	HALES TR	RV 48	ANDERSON TR														

SHEET 12 OF 14

SWAN CREEK VILLAGE  
 PHASE 2

SECTION 5, 6, 7, 8  
 T.14 N., R.5 E.,  
 S.L.B. & M.

BOOK \_\_\_\_\_  
 PAGE \_\_\_\_\_

DRAWN BY \_\_\_\_\_ DATE \_\_\_\_\_ SCALE: 1" = 100'



N.00°26'58"E 2674.052' (CORNER TO CORNER)

537.025'