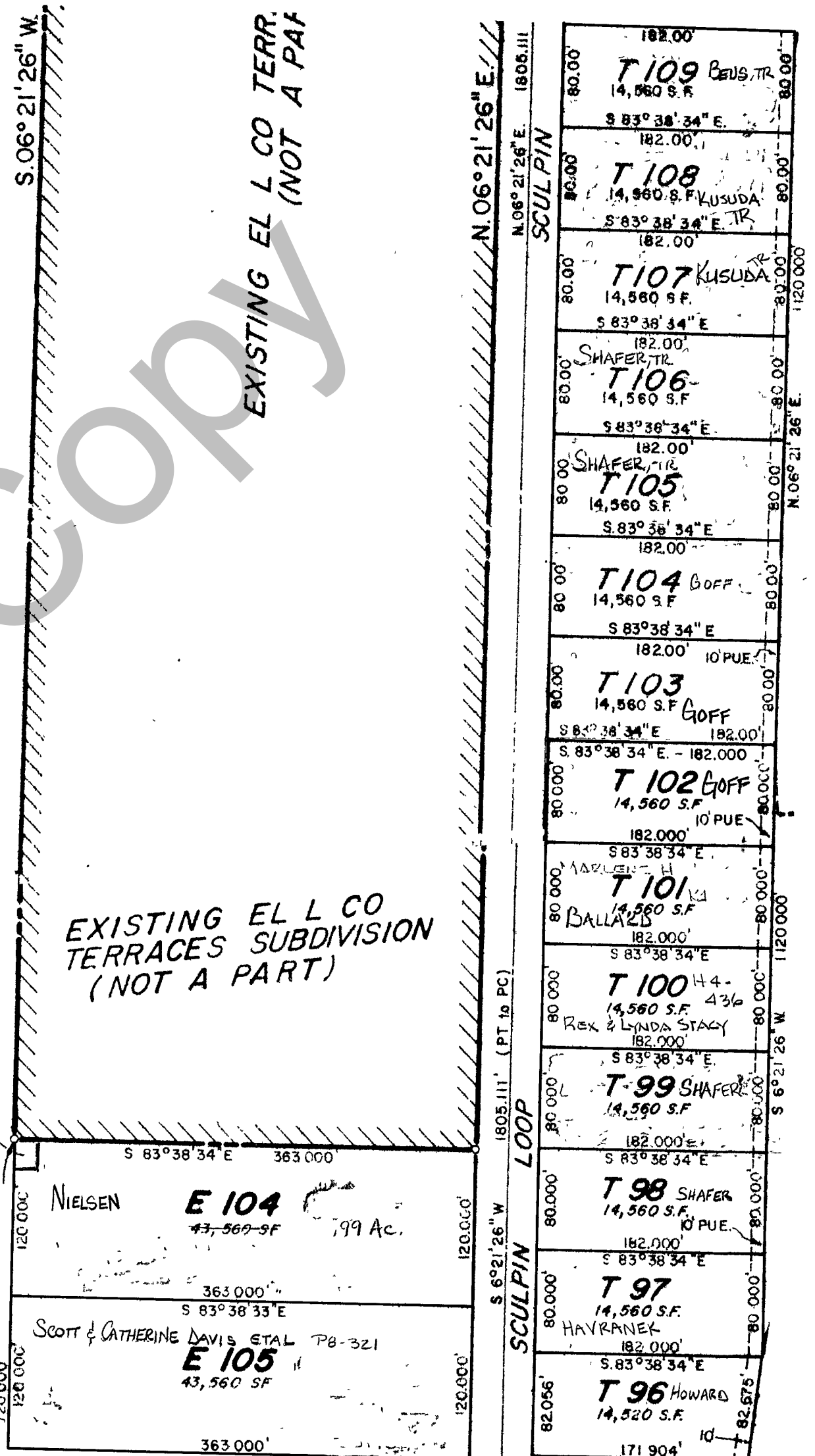


RICH COUNTY, UTAH

MATCH TO SHEET 9 OF 14

S.00°19'01" W. 2665.47'

OPEN AREA



MATCH TO SHEET 11 OF 14 OPEN AREA

EXISTING EL L CO TERRACES SUBDIVISION (NOT A PART)

SWAN CREEK VILLAGE HOA .07 AC -110

MATCH TO SHEET 13 OF 14

E = 41-02-040-LOT  
 T = 41-02-050-LOT

SHEET 10 OF 14

REVISIONS	

SWAN CREEK VILLAGE  
 PHASE 2

SECTION 5, 6, 7, 8  
 T. 14 N., R. 5 E.,  
 S.L.B. & M.

BOOK \_\_\_\_\_  
 PAGE \_\_\_\_\_

DATE \_\_\_\_\_ SCALE : 1" = 100'