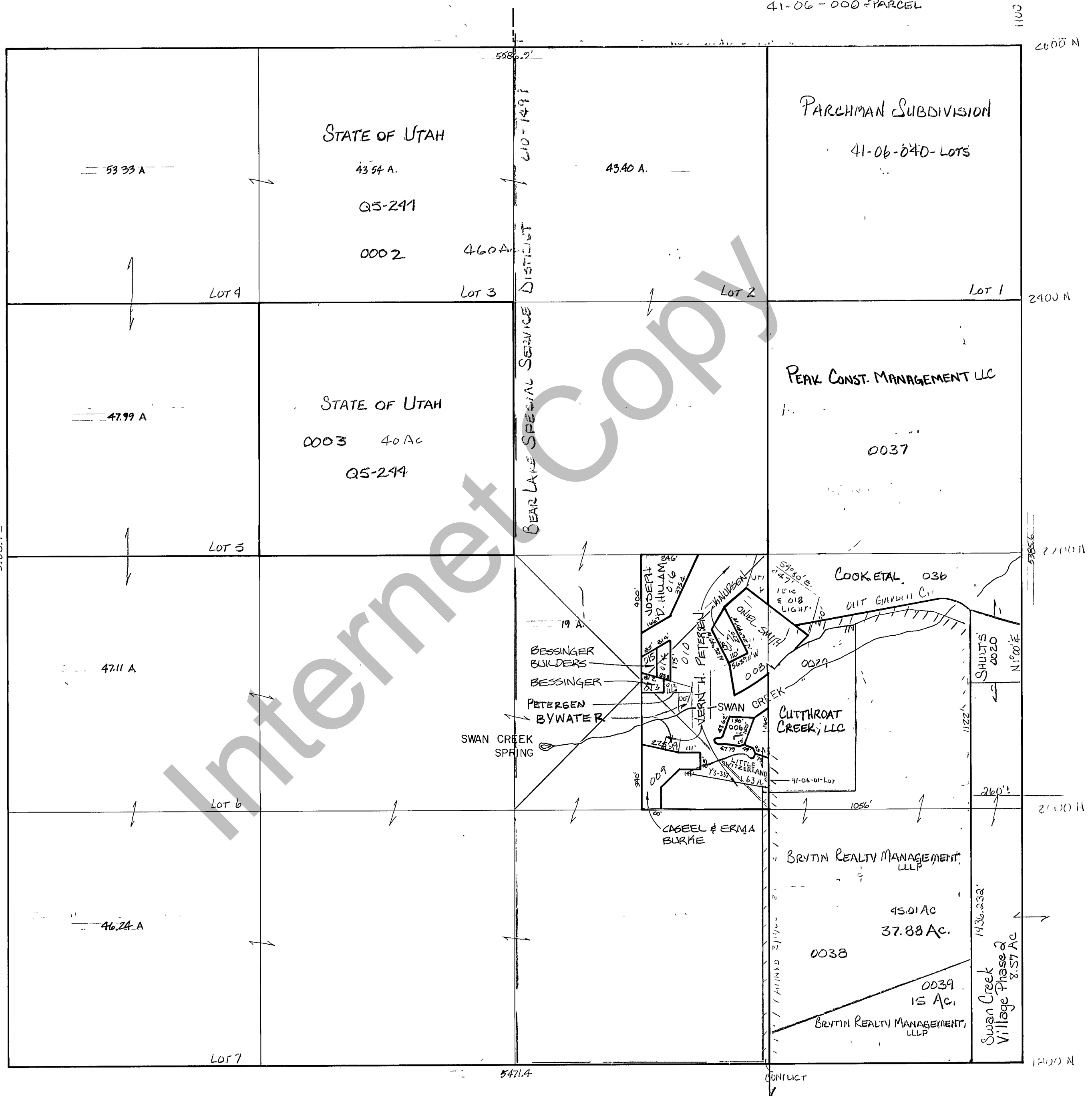


RICH COUNTY
SECTION 6, T.14N., R.5E., S.L.B.&M.



REVISIONS

THIS PLAT IS MADE SOLELY FOR THE PURPOSE OF ASSISTING IN LOCATING THE LAND, AND THE RECORDER ASSUMES NO LIABILITY FOR VARIATIONS, IF ANY, WITH AN ACTUAL SURVEY.

Section 6 T.14N. R.5E.

drawn by GP

date OCT 1978

book page

scale 1" = 400'