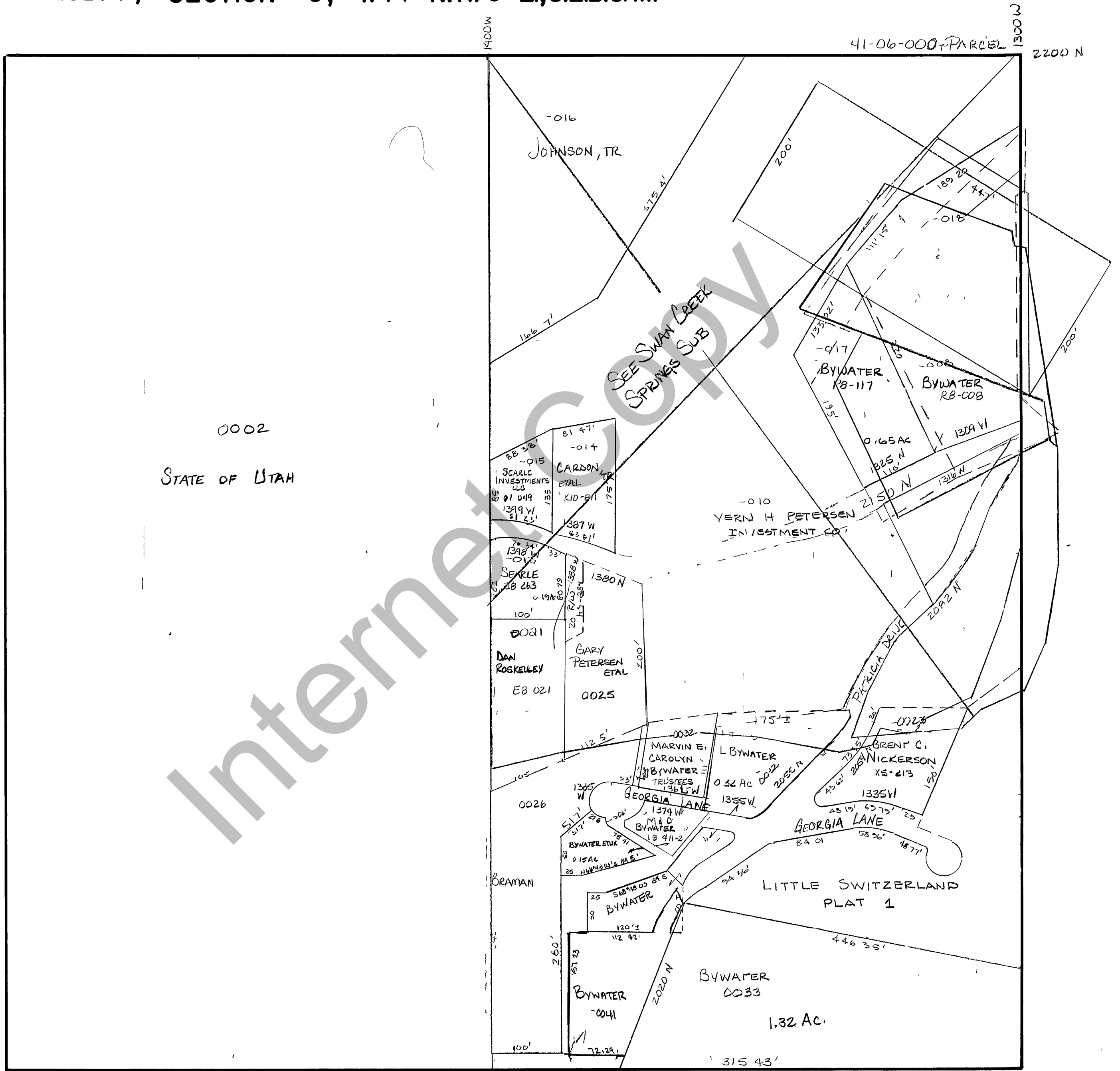


RICH COUNTY
 NW/4SE/4, SECTION 6, T.14 N.R.5 E.,S.L.B.&M.



REVISIONS	THIS PLAT IS MADE SOLELY FOR THE PURPOSE OF ASSISTING IN LOCATING THE LAND, AND THE RECORDER ASSUMES NO LIABILITY FOR VARIATIONS IF ANY, WITH AN ACTUAL SURVEY.	NW/4 SE/4 Section 6, T.14 N R 5 E	book page
		drawn by DE	scale 1"=100'
		date 5-82	