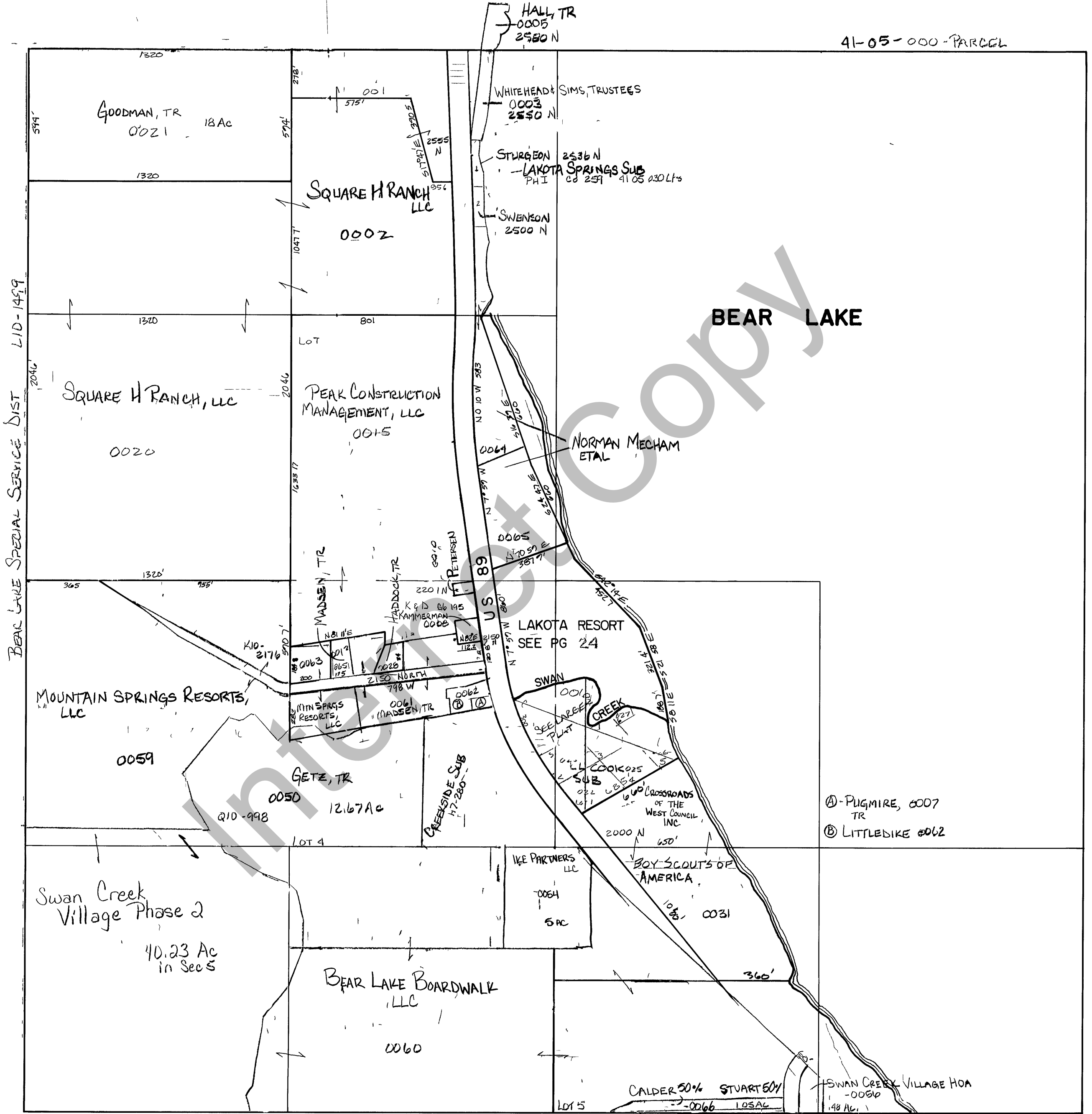


RICH COUNTY
 SECTION 5, T.14N., R.5E., S.L B.&M.



BEAR LAKE SPECIAL SERVICE DIST L10-1489

41-05-000-PARCEL

BEAR LAKE

BRASS CAP ↑ LAT 41°58'45.5444 (N)
 LONG 111°24'34.6172 (W)
 see Sec 8
 BRASS CAP ↑ LAT 41°58'45.3282 (N)
 LONG 111°24'17.1676 (W)

REVISIONS			THIS PLAT IS MADE SOLELY FOR THE PURPOSE OF ASSISTING IN LOCATING THE LAND, AND THE RECORDER ASSUMES NO LIABILITY FOR VARIATIONS IF ANY, WITH AN ACTUAL SURVEY	Section <u>5</u> T <u>14</u> N R <u>5</u> E	
				book	page
			drawn by GP	date OCT 1978	scale 1" = 400'