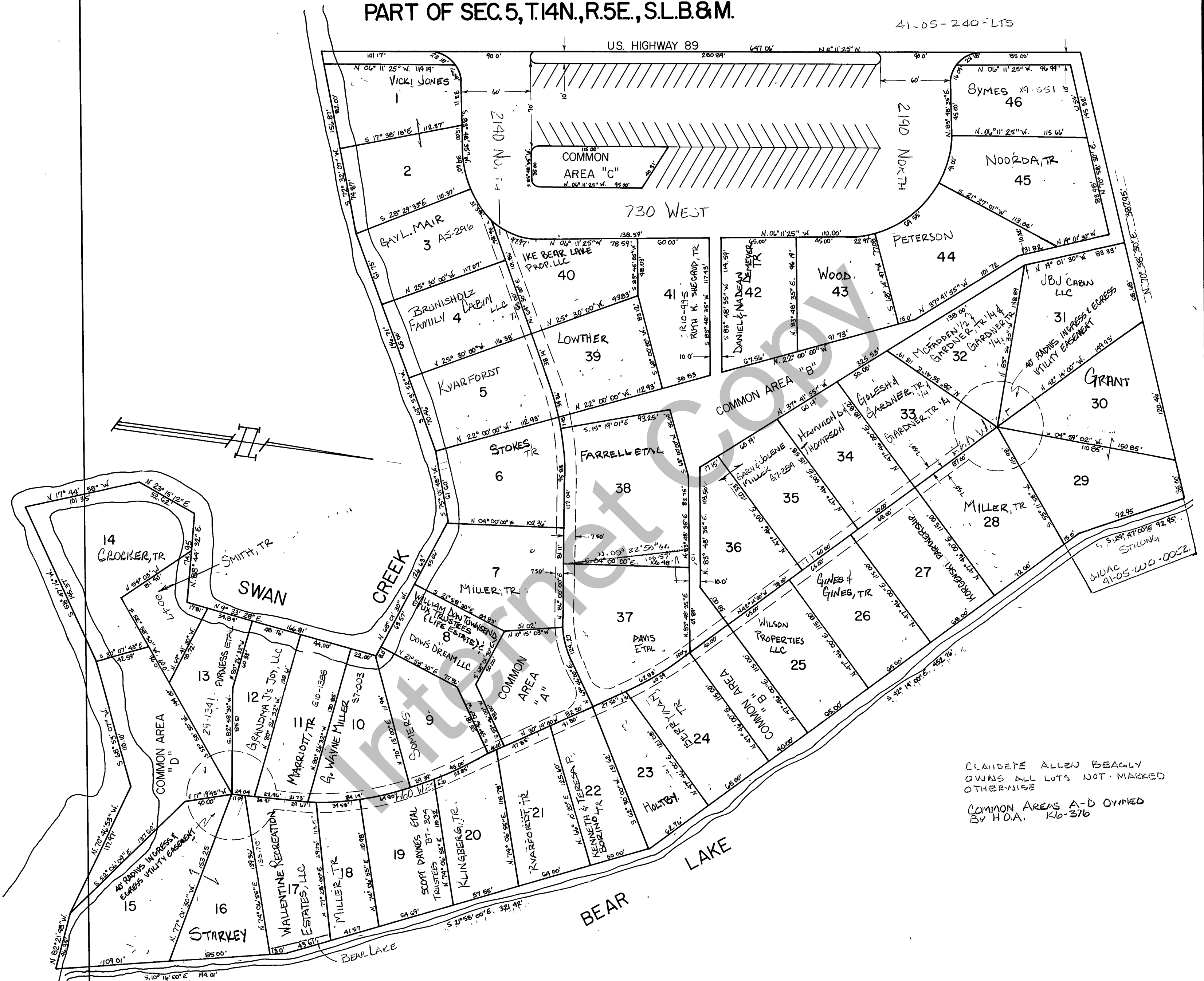


RICH COUNTY PART OF SEC. 5, T.14N., R.5E., S.1B.8M.

41-05-240-LTS



CLAUDETE ALLEN BEAGLY
OWNS ALL LOTS NOT MARKED
OTHERWISE

COMMON AREAS A-D OWNED
BY H.O.A. K6-376

REVISIONS		

LAKOTA ESTATES
SUBDIVISION

Section 5 T.14N. R.5E
drawn by L.M date OCT. 78

book page
Nor 10 Scale
scale 1" = 50'