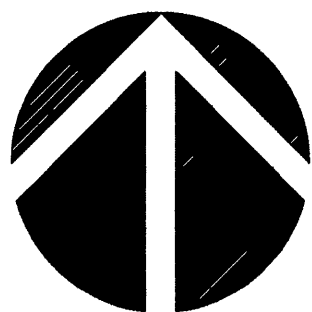
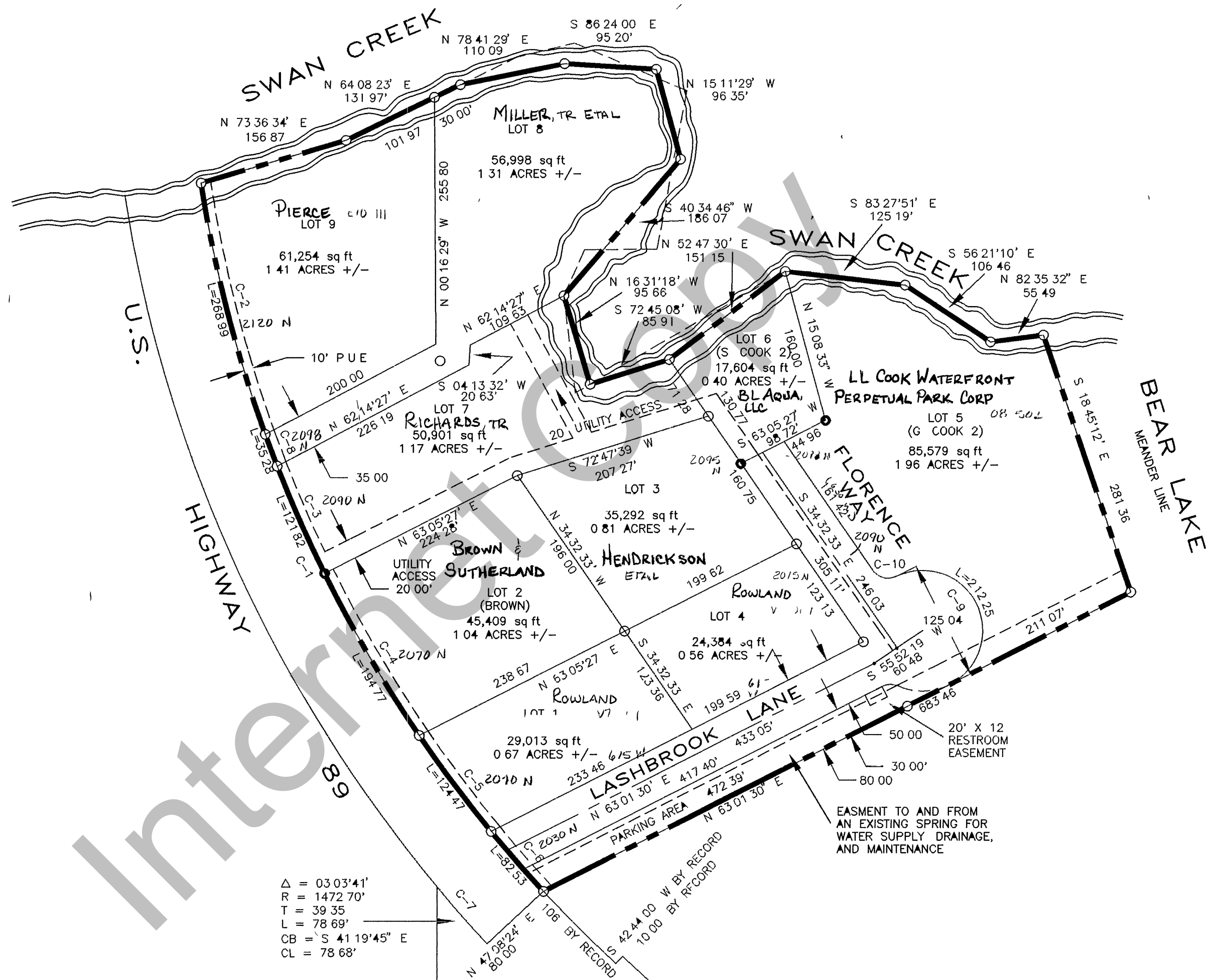


RICH COUNTY



SCALE 1 INCH = 100 FEET



Δ = 03 03' 41"  
 R = 1472 70'  
 T = 39 35'  
 L = 78 69'  
 CB = S 41 19' 45" E  
 CL = 78 68'

CURVE	RADIUS	LENGTH	TANGENT	CHORD	BEARING	DELTA
C-1	1392 70'	827 85'	426 56'	815 72'	S 25 49' 51" E	34 03' 29"
C-2	1392 70'	268 90'	134 91'	268 57'	N 14 20 06" W	11 03 59"
C-3	1392 70'	139 44'	69 78'	139 38'	N 23 27' 46" W	05 44' 12"
C-4	1392 70'	194 77'	97 54'	194 61'	S 30 20 15" E	08 00 46"
C-5	1392 70'	124 47'	62 27'	124 43'	S 36 54 15" E	05 07' 14"
C-6	1392 70'	82 53'	41 28'	82 52'	S 41 09' 44" E	03 23' 43"
C-7	1472 70'	78 69'	39 35'	78 68'	S 41 19' 45" E	03 03' 41"
C-8	1392 70'	35 28'	17 64'	35 28'	S 20 35' 38" E	01 27' 05"

SOUTH QUARTER CORNER, SECTION 5,  
 TOWNSHIP 14 NORTH RANGE 5 EAST,  
 SALT LAKE BASE AND MERIDIAN  
 (CALCULATED LOCATION FROM LINE MARKER)

SOUTHWEST CORNER, SECTION 5  
 TOWNSHIP 14 NORTH RANGE 5 EAST,  
 SALT LAKE BASE AND MERIDIAN  
 (BY RECORD)

EAST BY RECORD  
 1567 +/- BY RECORD

41-05 010-L13

REVISIONS _____ _____ _____	LL COOK, HATTIE Y COOK SUBDIVISION (AMENDED)	SECTION 5 T 14 N, R 5 E S L B & M	SCALE
			1"=100'