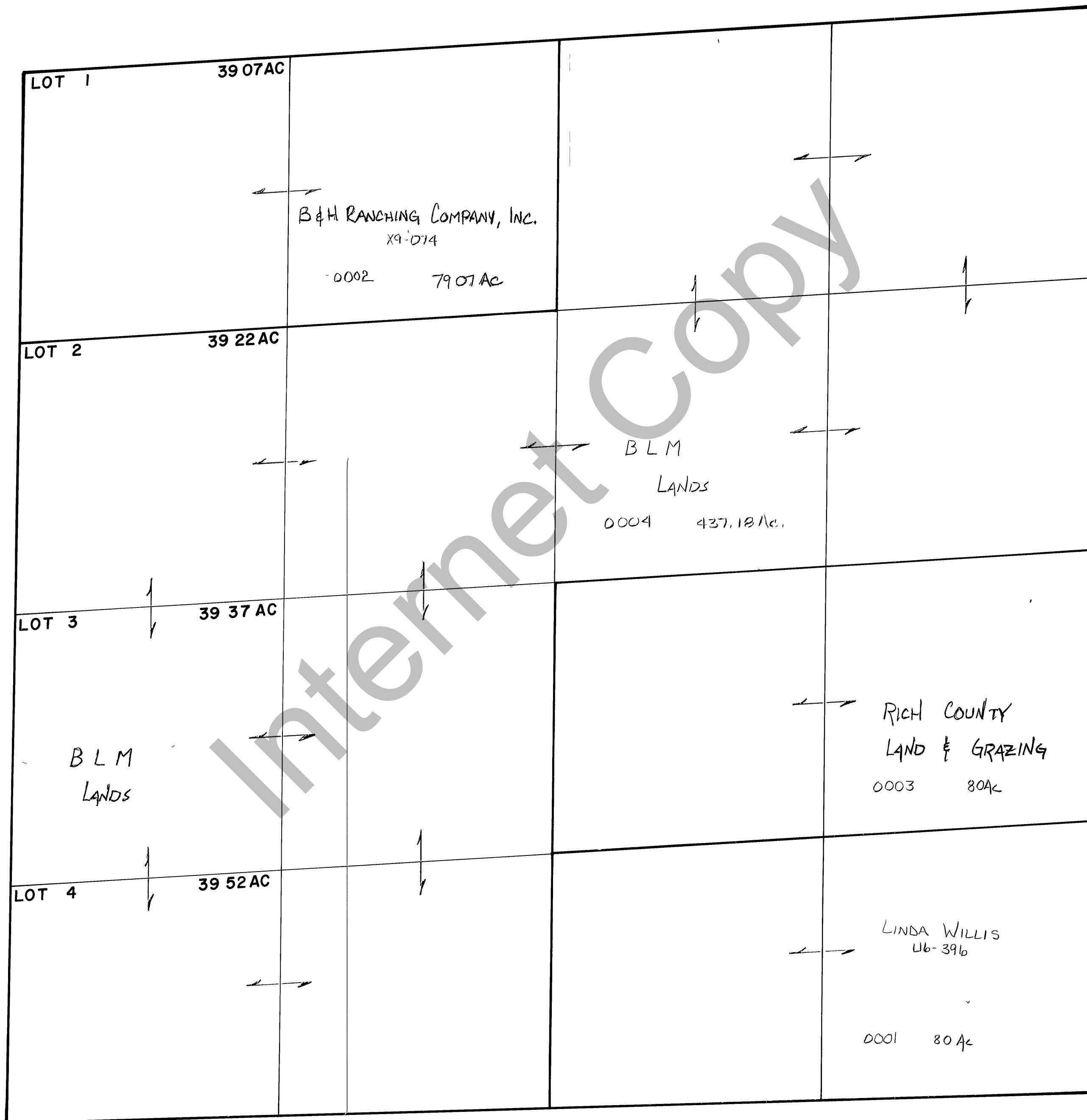


RICH COUNTY
 SECTION 19, T. 13 N. R. 7 E., S.L.B. & M.

SERIAL NO = 38-19-000-PARCEL



REVISIONS		

THIS PLAT IS MADE SOLELY FOR THE PURPOSE OF ASSISTING IN LOCATING THE LAND, AND THE RECORDER ASSUMES NO LIABILITY FOR ERRORS OF ANY, WITH AN ACTUAL SURVEY

Section 19 T 13 N R 7E
 drawn by DW date 12-79

book _____ page _____
 scale 1" = 400'