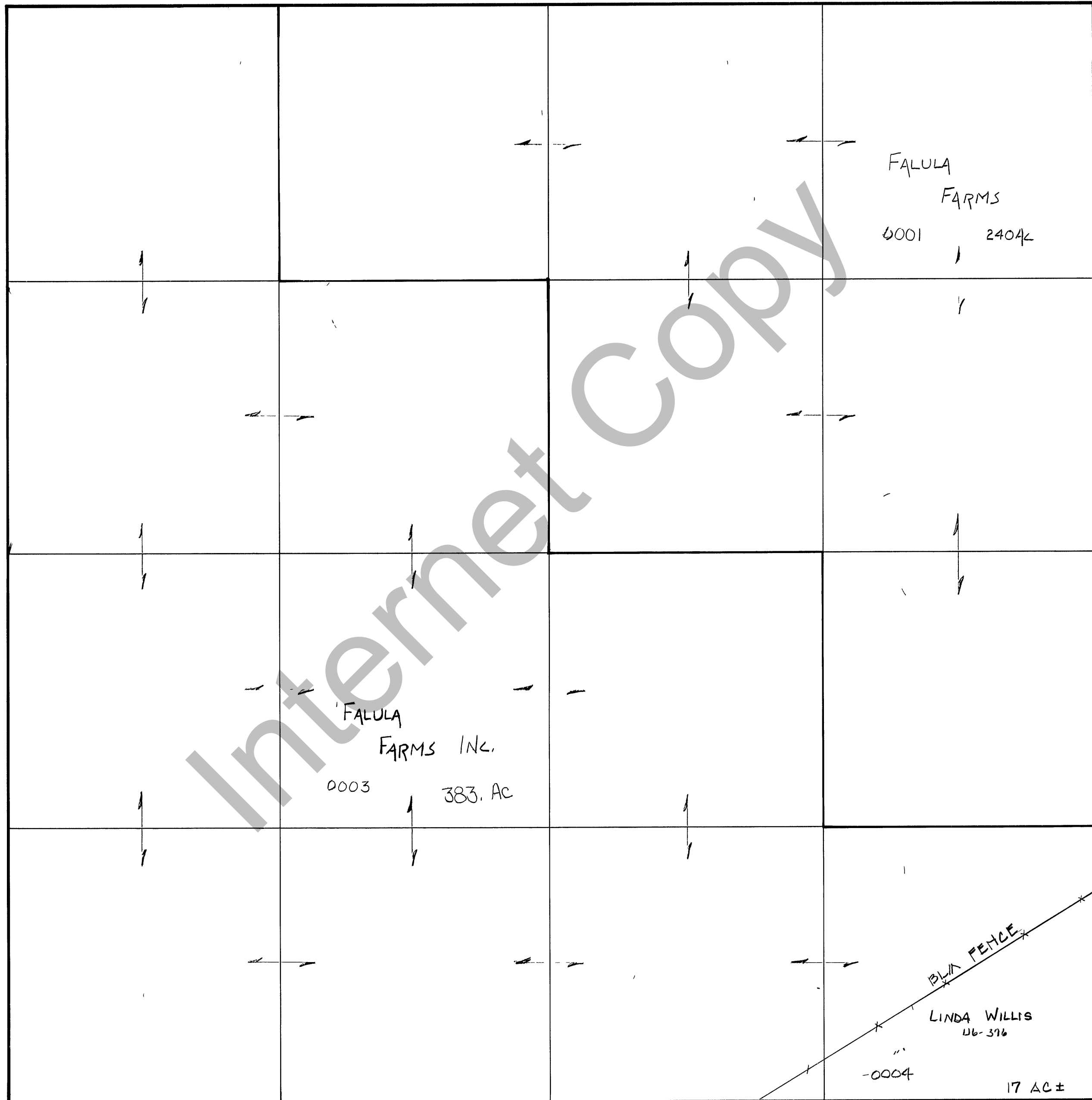


RICH COUNTY
SECTION 29, T. 13 N. R. 6 E., S.L.B. & M.

SERIAL NO. = 37-29-000-PARCEL



Internet Copy

REVISIONS		

THIS PLAT IS MADE SOLELY FOR THE PURPOSE OF ASSISTING IN LOCATING THE LAND, AND THE RECORDER ASSUMES NO LIABILITY FOR VARIATIONS, IF ANY WITH AN ACTUAL SURVEY

Section 29 T 13 N. R 6E

book page

drawn by DW date 1-80

scale 1"=400'