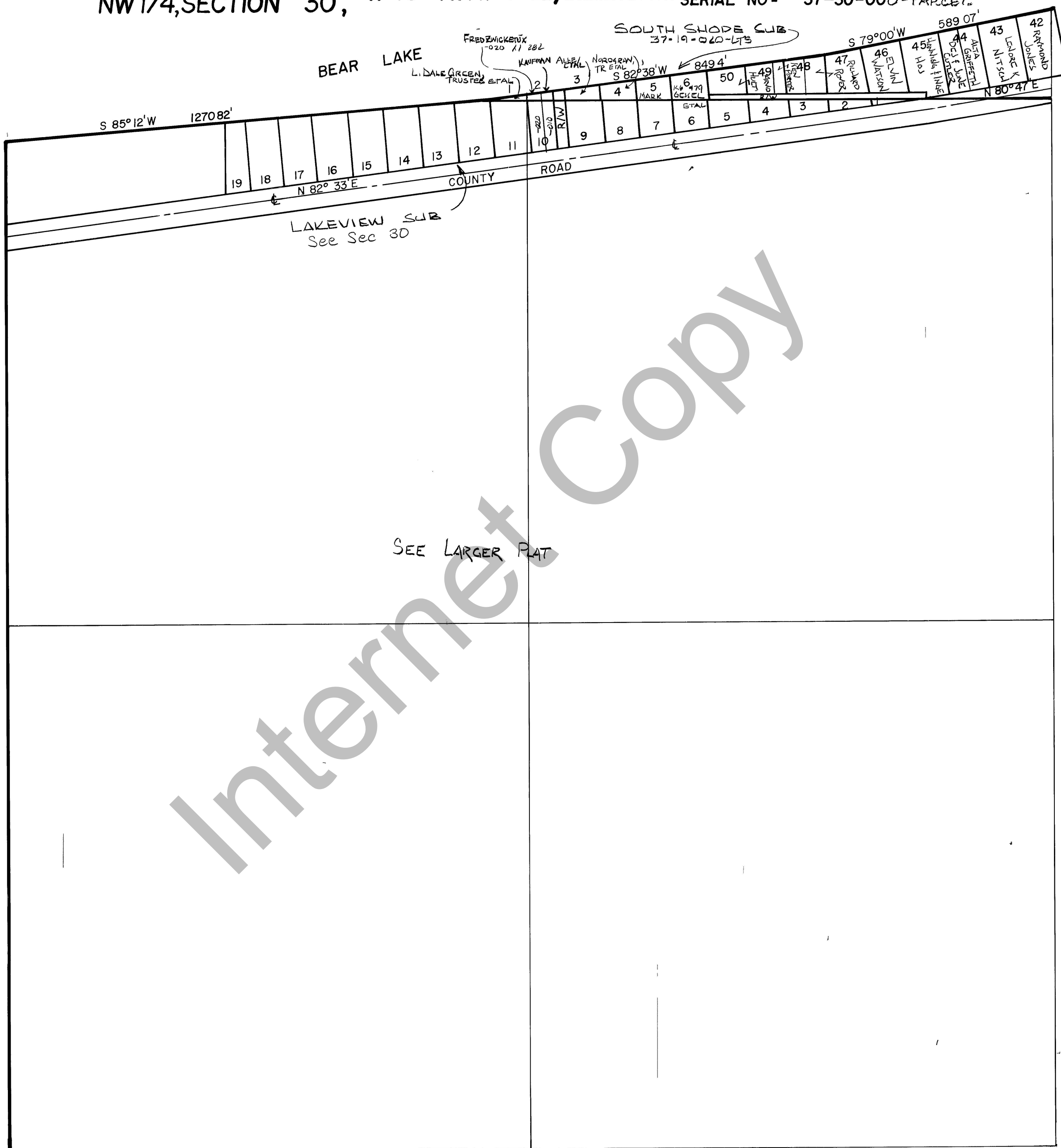


RICH COUNTY

SW 1/4, SECTION 19, T. 13 N. R. 6 E., S.L.B. & M. SERIAL NO = 37-30-000-PARCEL



SEE LARGER PLAT

REVISIONS

NO.	DATE	DESCRIPTION

THIS PLAT IS MADE SOLELY FOR THE PURPOSE OF ASSISTING IN LOCATING THE L. NO. AND THE B-CORNER AS SHOWN. NO LIABILITY FOR VARIATIONS IF ANY, WITH AN ACTUAL SURVEY

Section 19830T 13N. R 6E.	book	page
drawn by DW	date 4-80	scale 1"=200'