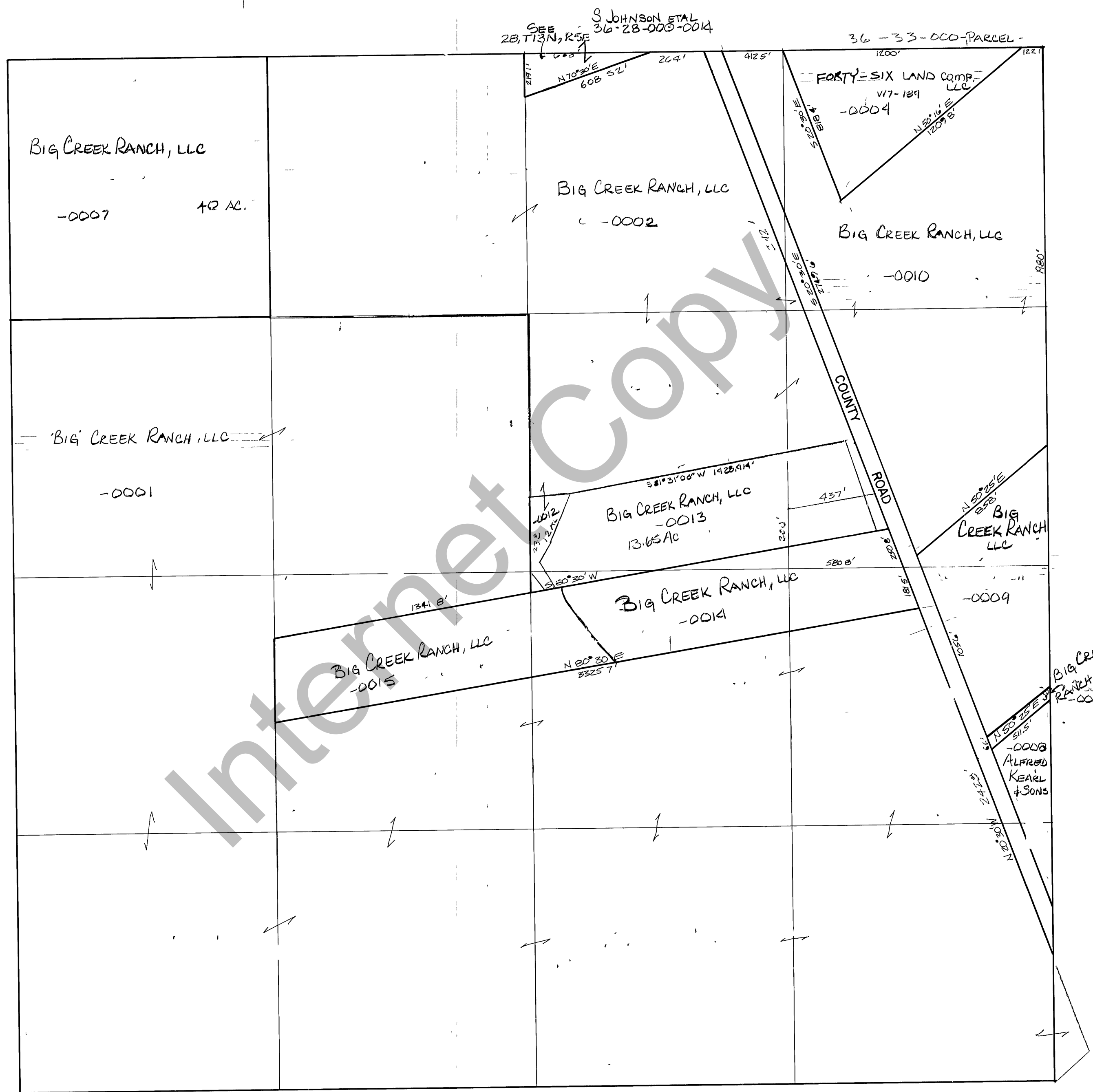


RICH COUNTY
 SECTION 33, T.13N., R.5E., S.L.B.&M.



REVISIONS	DESCRIPTION

THIS PLAT IS MADE SOLELY FOR THE PURPOSE OF ASSISTING IN LOCATING THE LAND, AND THE RECORDER ASSUMES NO LIABILITY FOR VARIATIONS, IF ANY, WITH AN ACTUAL SURVEY