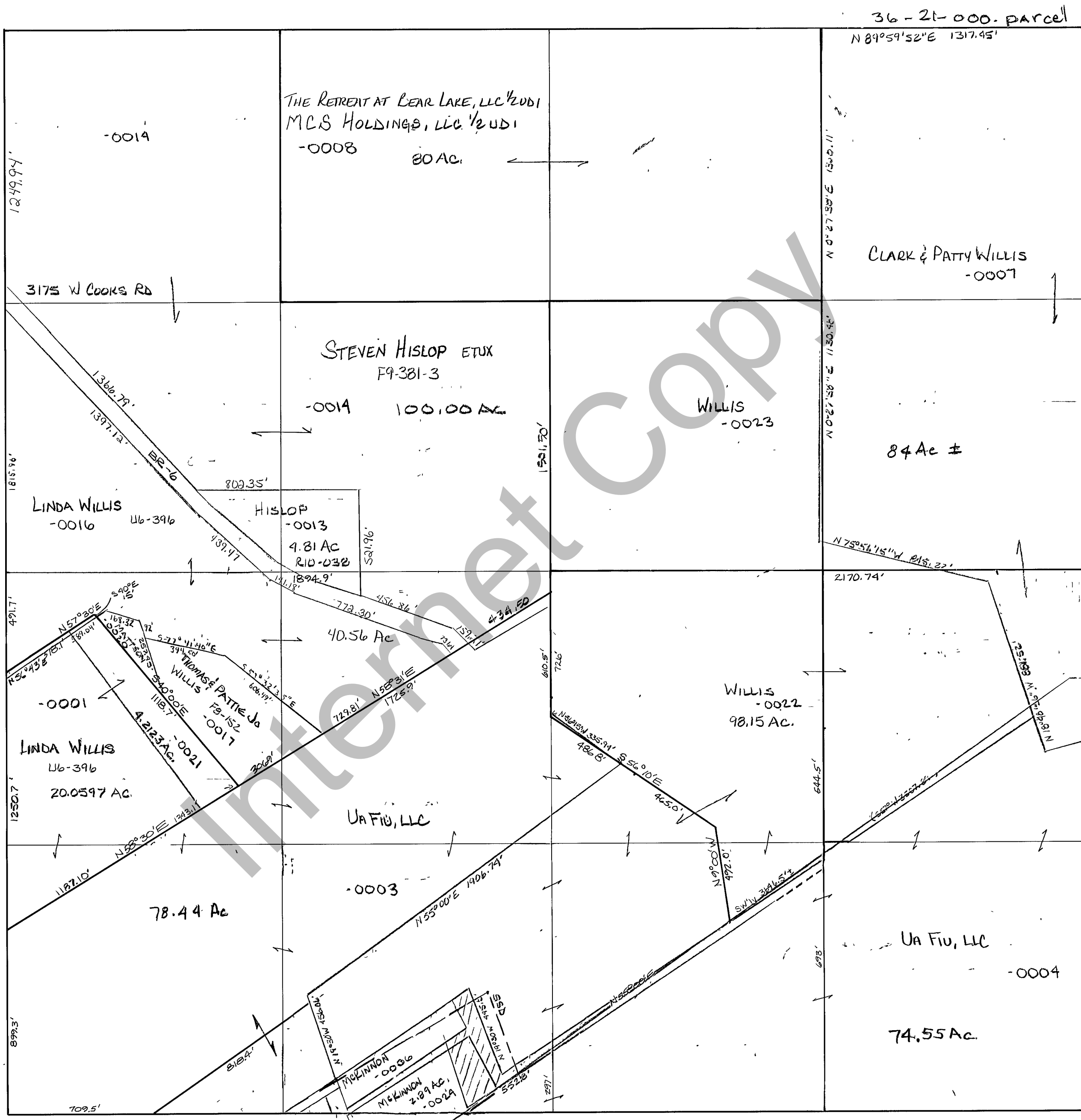


RICH COUNTY
SECTION 21, T.13N., R.5E. S.L.B.&M.



REVISIONS	

THIS PLAT IS MADE SOLELY FOR THE PURPOSE OF ASSISTING IN LOCATING THE LAND, AND THE RECORDER ASSUMES NO LIABILITY FOR VARIATIONS, IF ANY, WITH AN ACTUAL SURVEY.

Section 21 T.13N R.5E	book	page
drawn by GP	date NOV 1978	scale 1"=400'