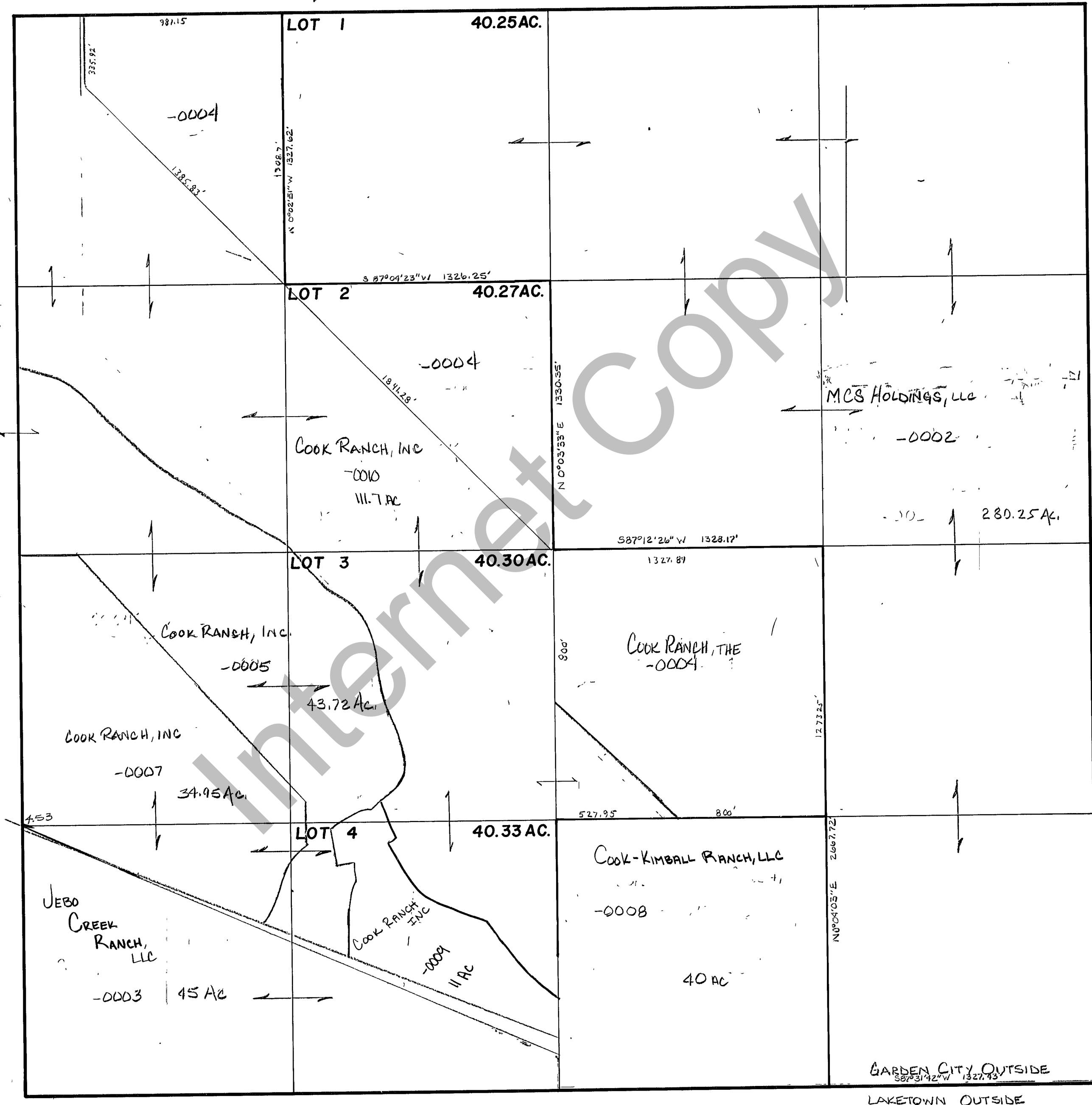


RICH COUNTY
 SECTION 17, T. 13 N. R. 5 E., S.L.B. & M.

SERIAL NO. = 36-17-000-PARCEL



REVISIONS

THIS PLAT IS MADE SOLELY FOR THE PURPOSE OF ASSISTING IN LOCATING THE LAND; AND THE RECORDER ASSUMES NO LIABILITY FOR VARIATIONS, IF ANY, WITH AN ACTUAL SURVEY.

Section 17 T. 13 N. R. 5 E.
 drawn by DW date 12-79 scale 1" = 400'
 book page