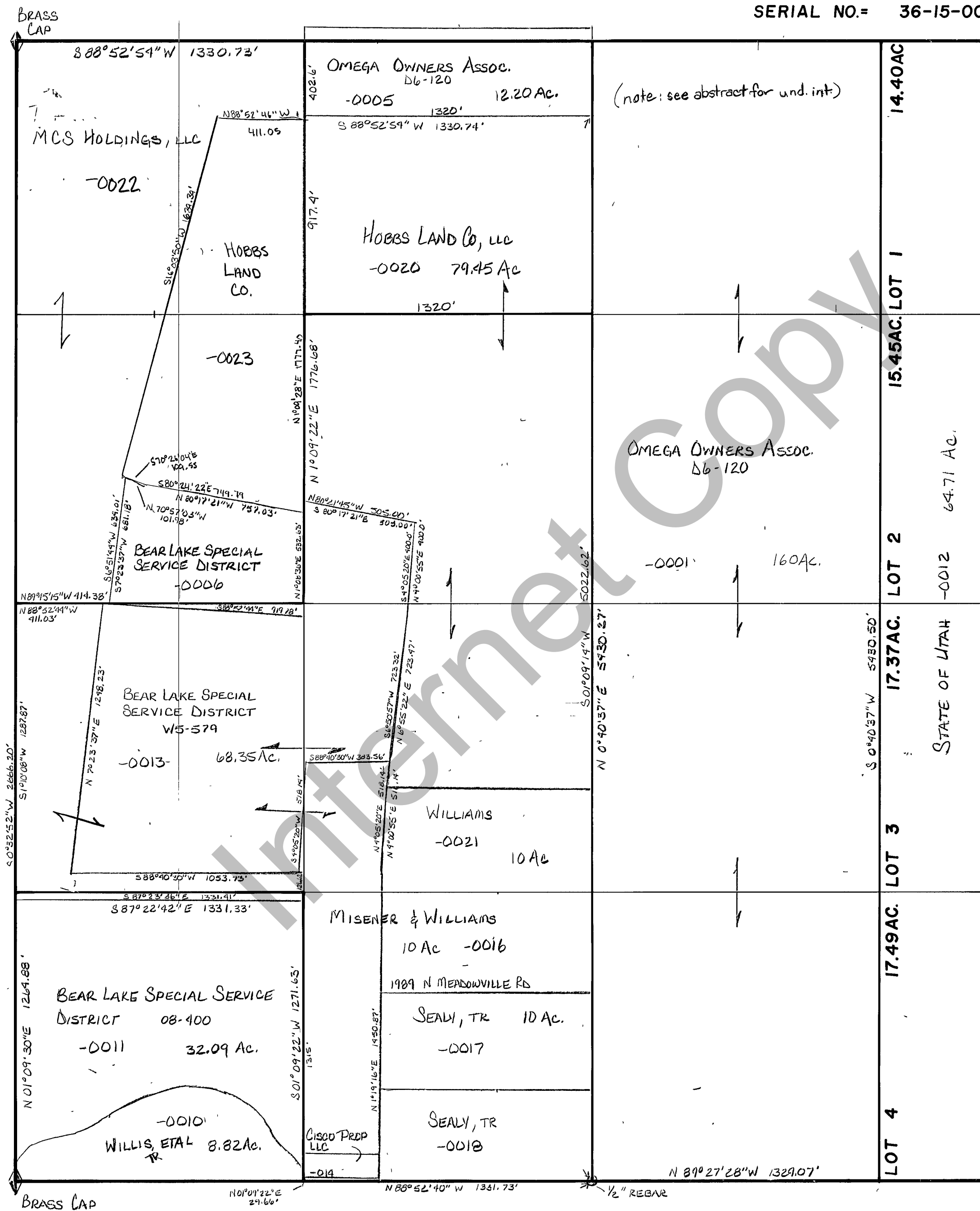


RICH COUNTY
SECTION 15 , T. 13 N.R. 5 E., S.L.B.&M.

SERIAL NO.= 36-15-000-PARCEL



14.40AC	LOT 1	15.45AC	LOT 2	17.37AC	LOT 3	17.49AC	LOT 4
				STATE OF UTAH			

BEAR LAKE

REVISIONS	

THIS PLAT IS MADE SOLELY FOR THE PURPOSE OF ASSISTING IN LOCATING THE LAND, AND THE RECORDER ASSUMES NO LIABILITY FOR VARIATIONS; IF ANY, WITH AN ACTUAL SURVEY.

Section 15 T. 13N. R. 5E.	book	page
drawn by DW	date 12-79	scale 1"=400'