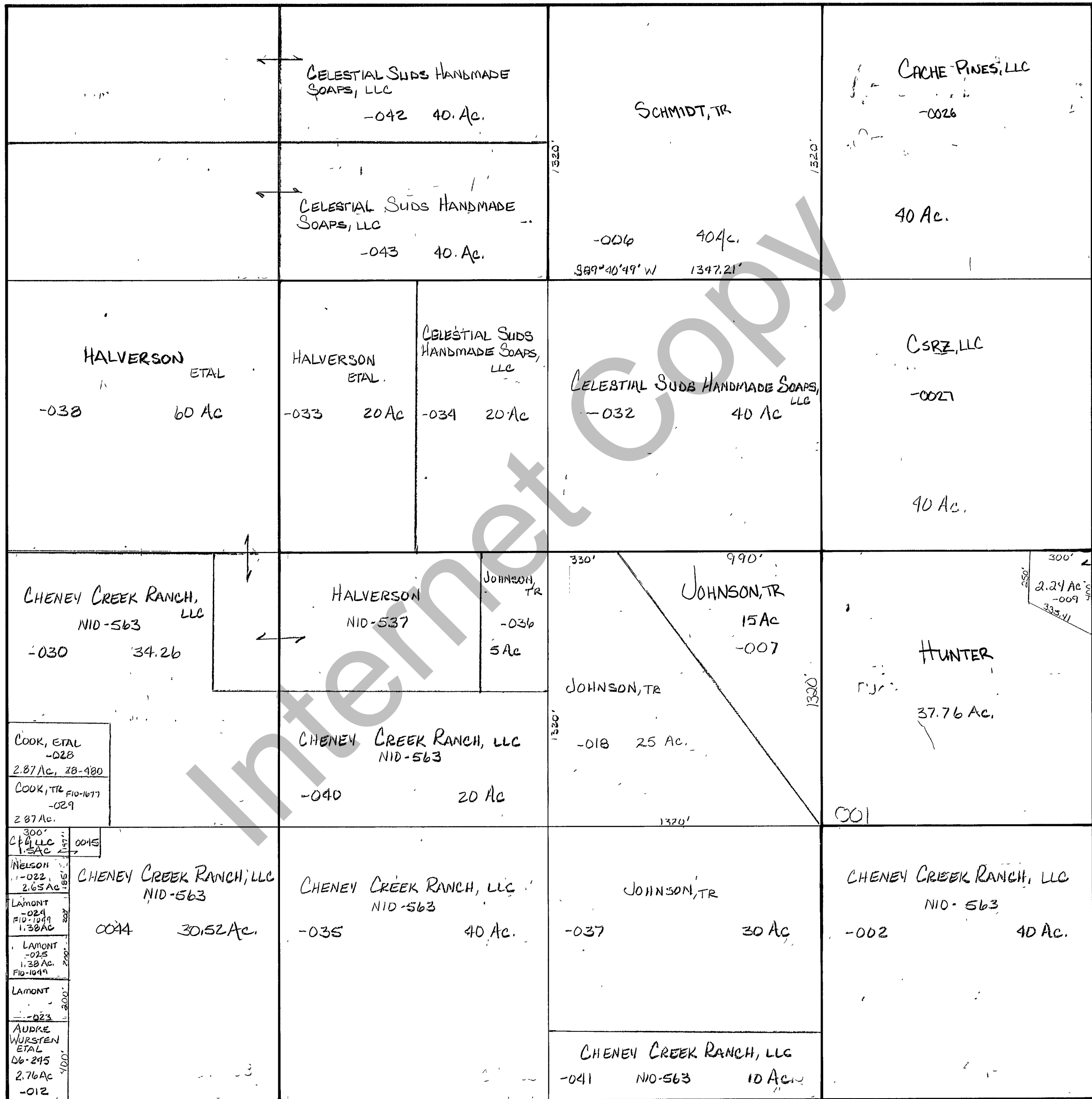


RICH COUNTY
SECTION 7, T. 13 N.R. 5 E., S.L.B.&M.

SERIAL NO. = 36-07-000-PARCEL



COOK, ETAL
-028
2.87 Ac, 28-180

COOK, TR
FID-1077
-029
2.87 Ac.

300'
CP&LLC
1.53 Ac

0045

NELSON
-022
2.65 Ac

LAMONT
-024
FID-1049
1.38 Ac

LAMONT
-025
FID-1049
1.38 Ac

LAMONT
-023

AUDRE
WURSTEN
ETAL
06-245
2.76 Ac
-012

REVISIONS		

THIS PLAT IS MADE SOLELY FOR THE PURPOSE OF ASSISTING IN LOCATING THE LAND, AND THE RECORDER ASSUMES NO LIABILITY FOR VARIATIONS, IF ANY, WITH AN ACTUAL SURVEY.

Section 7 T. 13 N. R. 5E

drawn by DW date 12-79 scale 1" = 400'

book _____ page _____