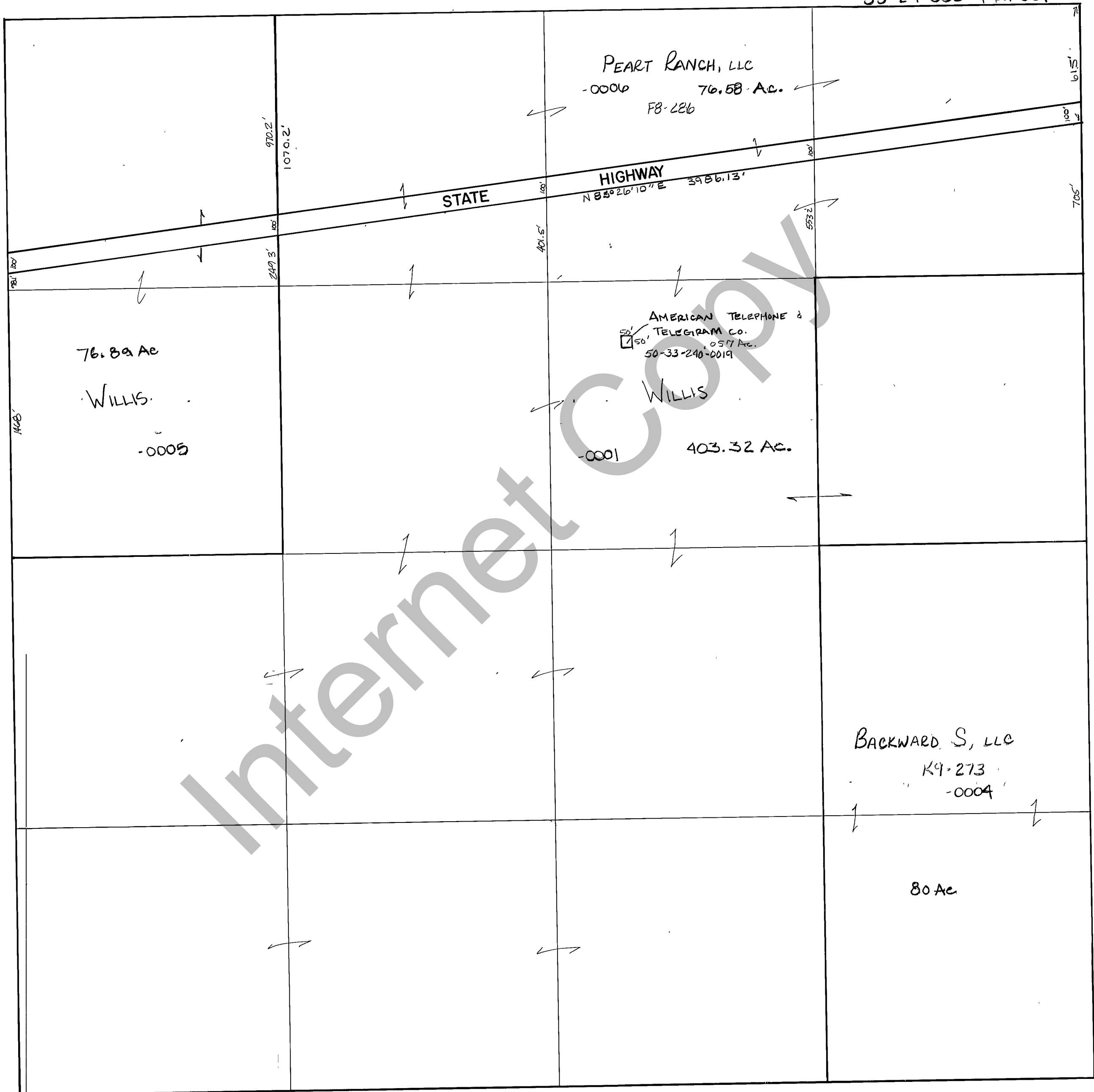


RICH COUNTY
SECTION 24, T.12N., R.7E., S.L.B.&M.

33-24-000-Parcel



REVISIONS		

THIS PLAT IS MADE SOLELY FOR THE PURPOSE OF ASSISTING IN LOCATING THE LAND, AND THE RECORDER ASSUMES NO LIABILITY FOR VARIATIONS, IF ANY, WITH AN ACTUAL SURVEY.

Section 24 T.12N. R.7E.		book	page
drawn by GP	date DEC 1978	scale 1"=400'	