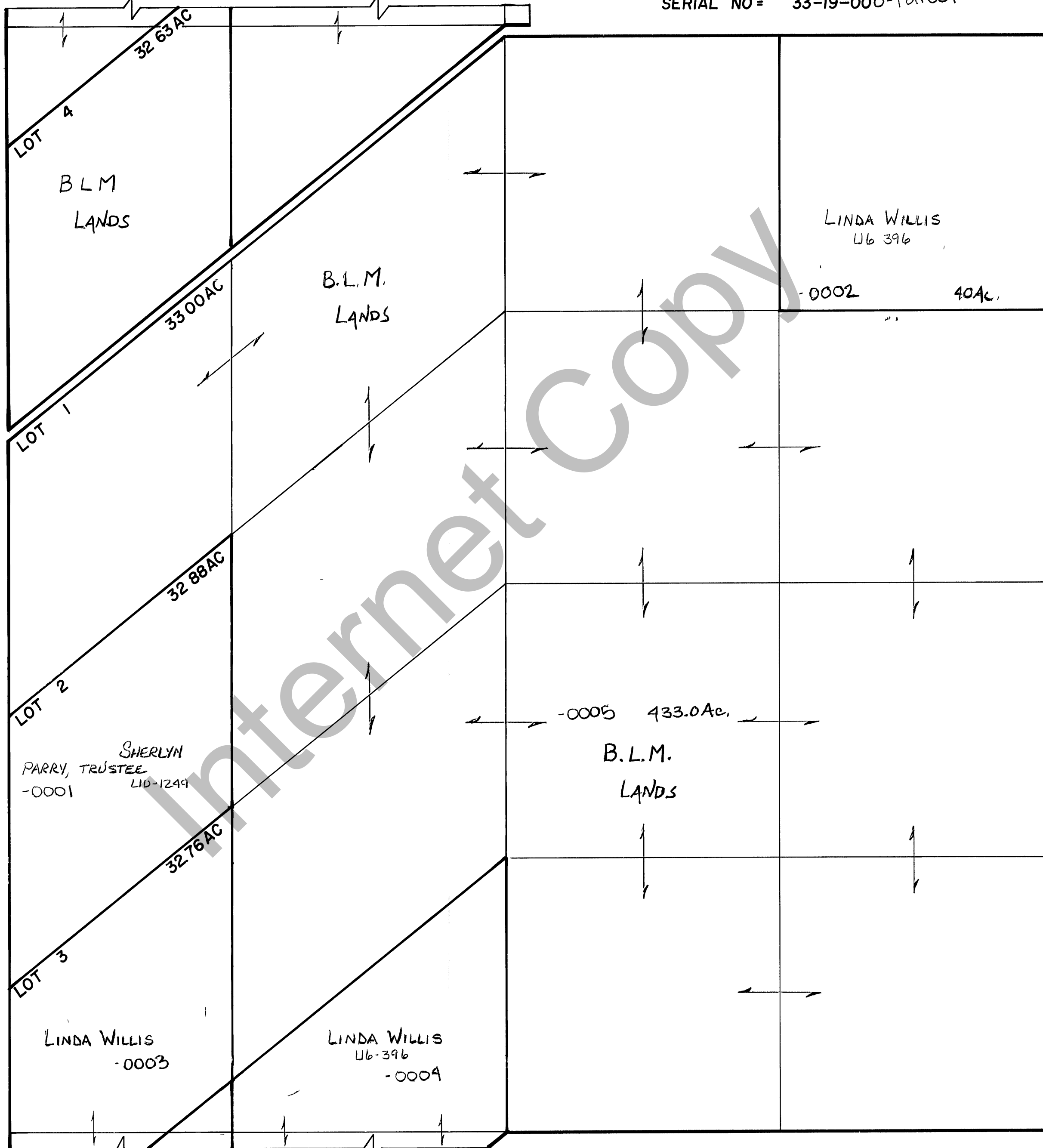


# RICH COUNTY

## SECTION 19 , T. 12 N. R. 7 E., S.L.B. & M.

FOR CONTINUATION SEE BOTTOM OF THE PLAT

SERIAL NO = 33-19-000-Parcel



FOR CONTINUATION SEE TOP OF THE PLAT

REVISIONS	

THIS PLAT IS MADE SOLELY FOR THE PURPOSE OF ASSISTING IN LOCATING THE LAND, AND THE RECORDER ASSUMES NO LIABILITY FOR VARIATIONS, IF ANY, WITH AN ACTUAL SURVEY

Section 19 T 12N R 7E.

book page

drawn by DW

date 12-79

scale 1" = 400'