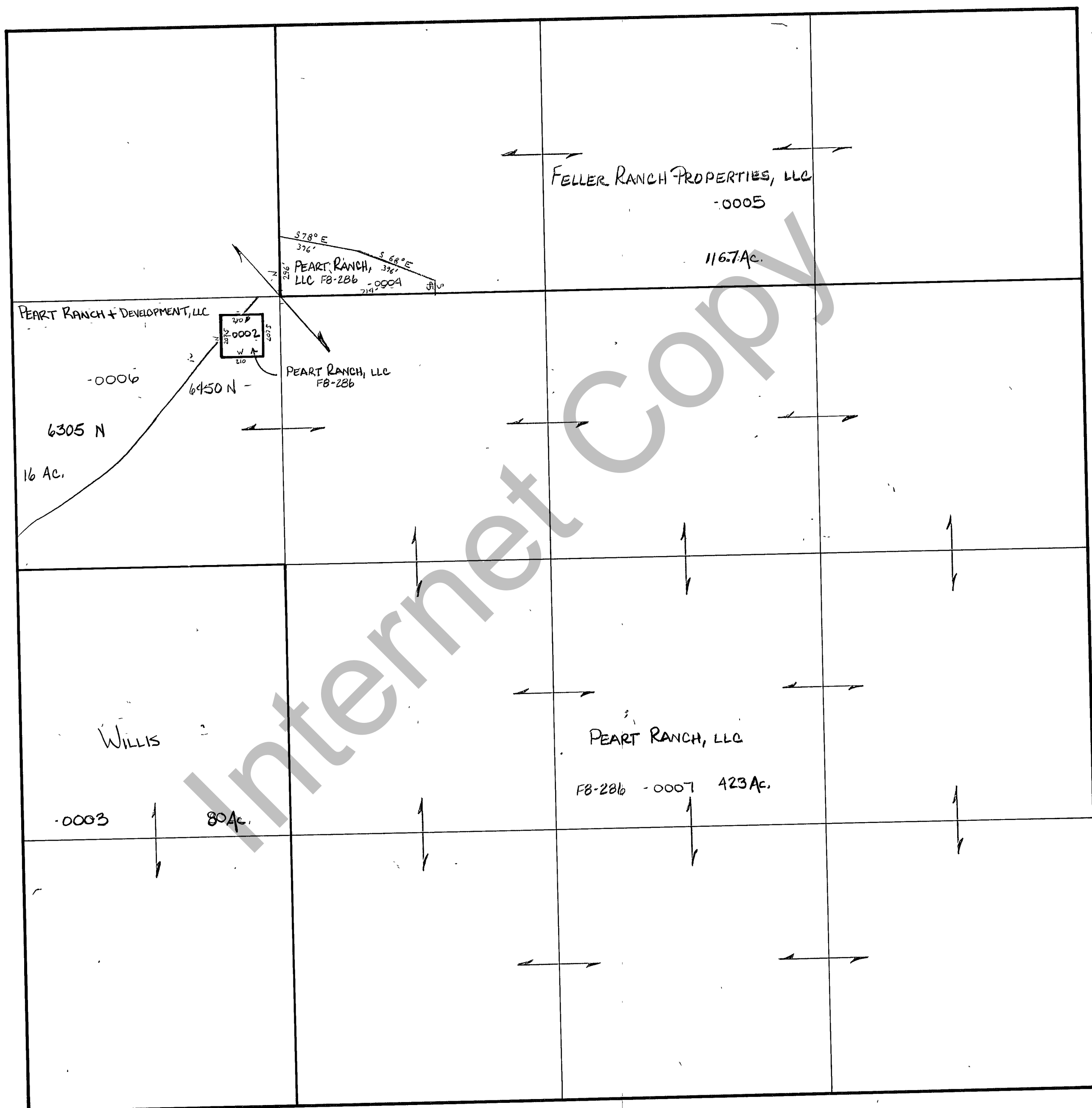


RICH COUNTY
 SECTION 13, T. 12 N. R. 7 E., S.L.B. & M.

SERIAL NO.= 33-13-000-Parcel



REVISIONS	

THIS PLAT IS MADE SOLELY FOR THE PURPOSE OF ASSISTING IN LOCATING THE LAND, AND THE RECORDER ASSUMES NO LIABILITY FOR VARIATIONS, IF ANY, WITH AN ACTUAL SURVEY.

Section 13 T. 12 N. R. 7 E.		book	page
drawn by DW	date 12-79	scale 1" = 400'	

T.M.S.