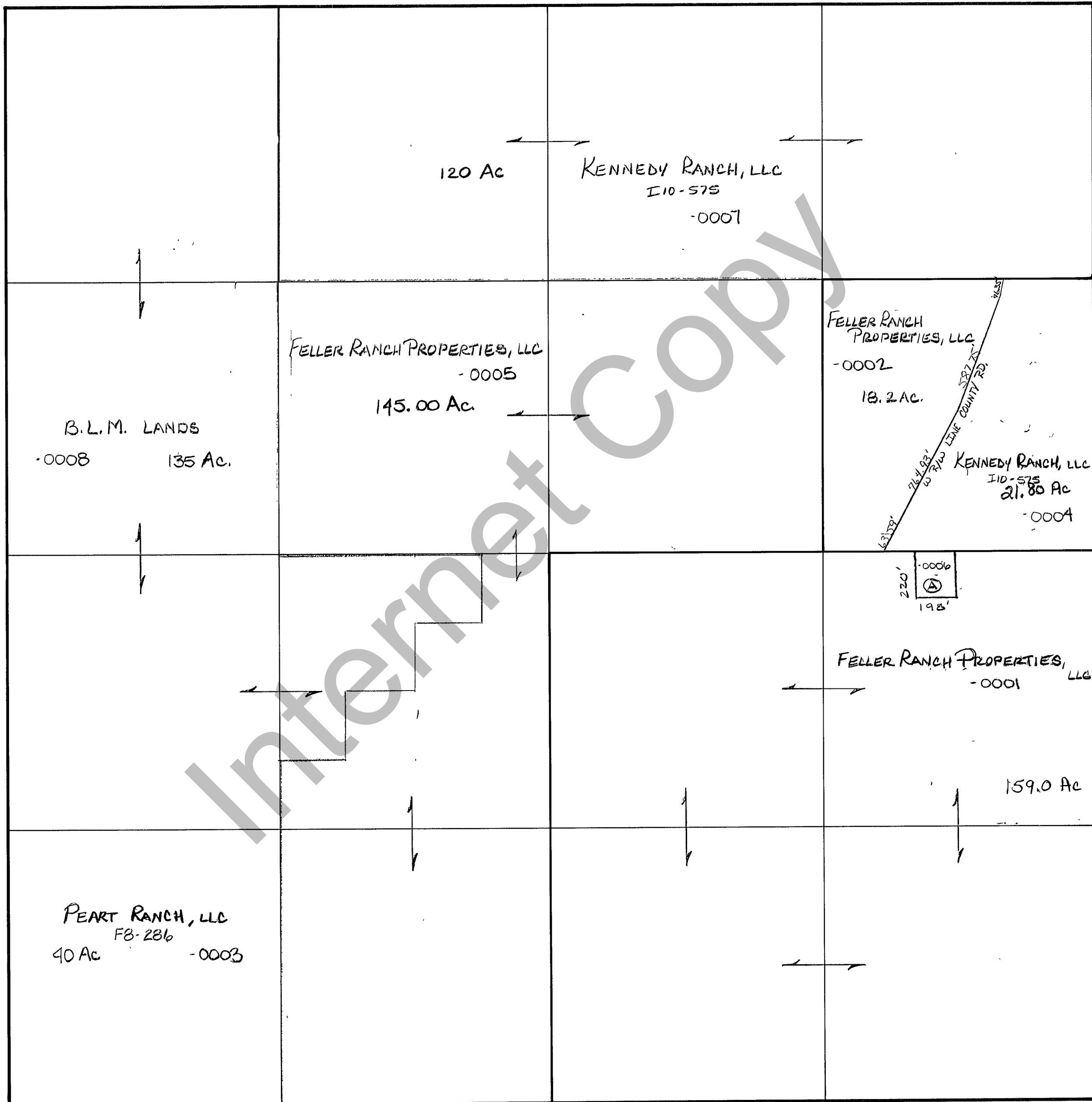


RICH COUNTY
SECTION 12 , T. 12 N.R. 7 E., S.L.B.&M.

SERIAL NO.= 33-12-000-Parcel



Internet Copy

REVISIONS		

THIS PLAT IS MADE SOLELY FOR THE PURPOSE OF ASSISTING IN LOCATING THE LAND, AND THE RECORDER ASSUMES NO LIABILITY FOR VARIATIONS, IF ANY, WITH AN ACTUAL SURVEY.

Section <u>12</u> T. <u>12N.</u> R. <u>7E.</u>		book	page
drawn by DW	date 12-79	scale 1"=400'	