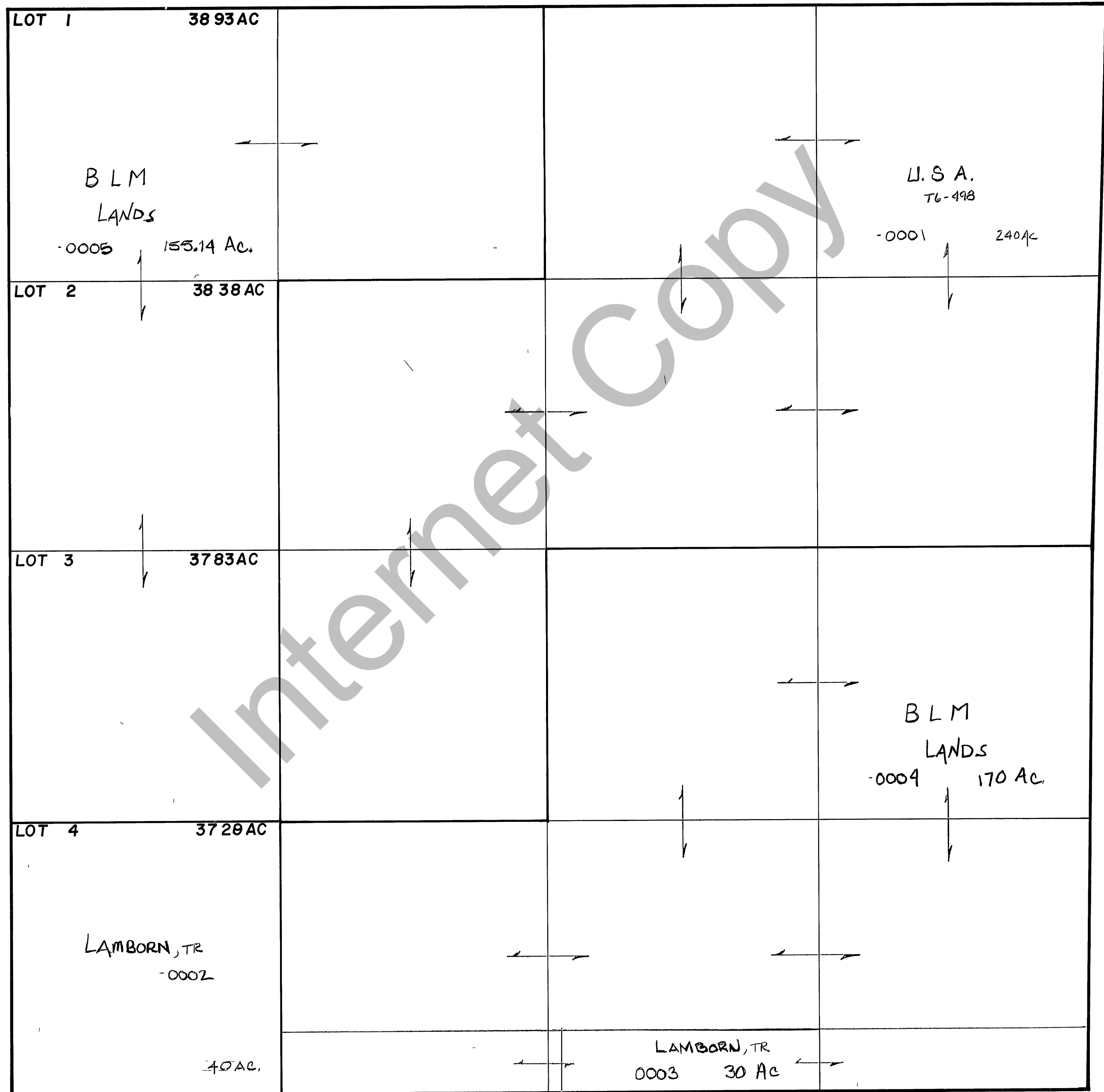


RICH COUNTY
 SECTION 19 , T. 12 N.R. 6 E., S.L.B.&M.

SERIAL NO = 32-19-000 Parcel



REVISIONS	DATE	BY	DESCRIPTION

THIS PLAT IS MADE SOLELY FOR THE PURPOSE OF ASSISTING IN LOCATING THE LAND, AND THE ORDER ASSUMES NO LIABILITY FOR VARIATIONS.

Section 19 T 12N. R 6E.

book page