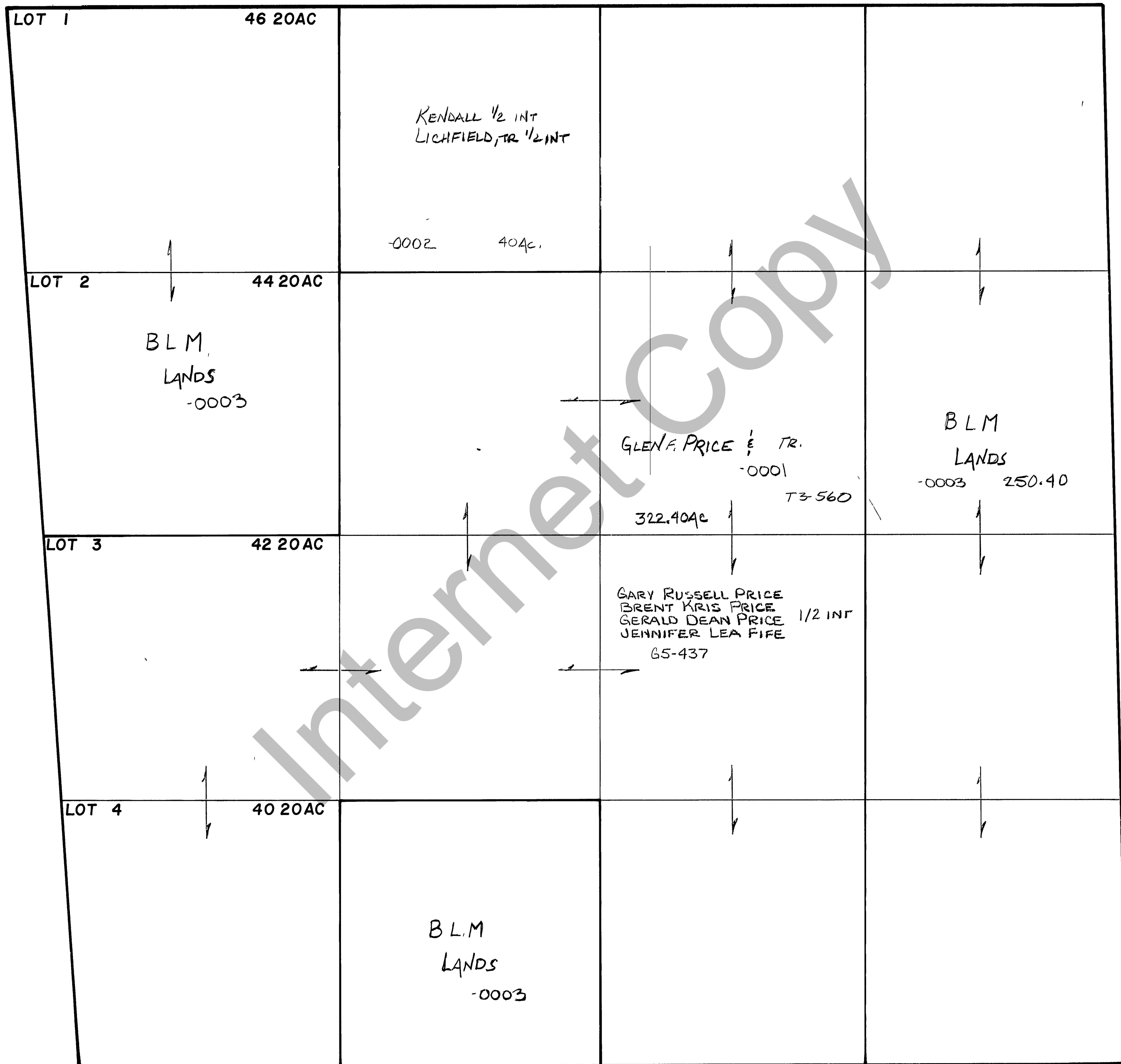


RICH COUNTY  
SECTION 18, T. 12 N. R. 6 E., S.L.B. & M.

SERIAL NO = 32-18-000-Parcel



REVISIONS		

THIS PLAT IS MADE SOLELY FOR THE PURPOSE OF ASSISTING IN LOCATING THE LAND, AND THE RECORDER ASSUMES NO LIABILITY FOR VARIATIONS IF ANY, WITH AN ACTUAL SURVEY

Section 18 T 12N R 6E

book \_\_\_\_\_ page \_\_\_\_\_

drawn by DW date 12-79

scale 1" = 400'